

**Welcome to the**

**MOUNTAINLAND**  
**SAFE STREETS**  
**FOR ALL**

**Virtual Open House – Summit County**

The meeting will begin shortly after 6 p.m. to allow participants time to join the Zoom webinar.

To submit questions, click the Q&A button on your screen. Our team will be monitoring the questions and will answer as many as possible throughout the presentation.

Please note, this event is being recorded and will be available for viewing at [www.mountainlandsafestreets.org](http://www.mountainlandsafestreets.org).

# MOUNTAINLAND SAFE STREETS

---



**Summit County Virtual Open House**

November 30, 2023

# Participant Instructions

## 1. TO SUBMIT A QUESTION

Click on the Q&A button at the bottom of the screen



Type question in the Q&A Window

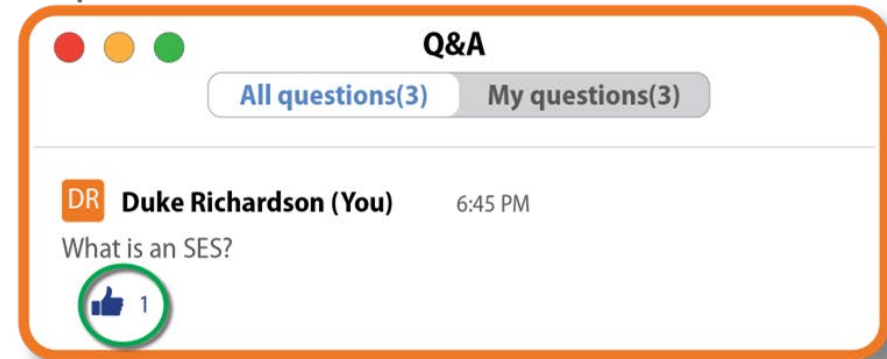
Type your question here...

Send anonymously

Cancel Send

## 2. TO LIKE OR UPVOTE A QUESTION

Click on the "thumbs-up- button" underneath questions



This helps us to know how many people have the same question



# Tonight's Presenters



**ROBERT ALLEN**  
Mountainland Association of Governments  
RPO Director



**CHARLES ALLEN**  
Parametrix  
Project Manager



**JEN SHRIBER**  
Parametrix  
Planner III



**STACEE ADAMS**  
Avenue Consultants  
Public Engagement Manager



# Mountainland Association of Governments

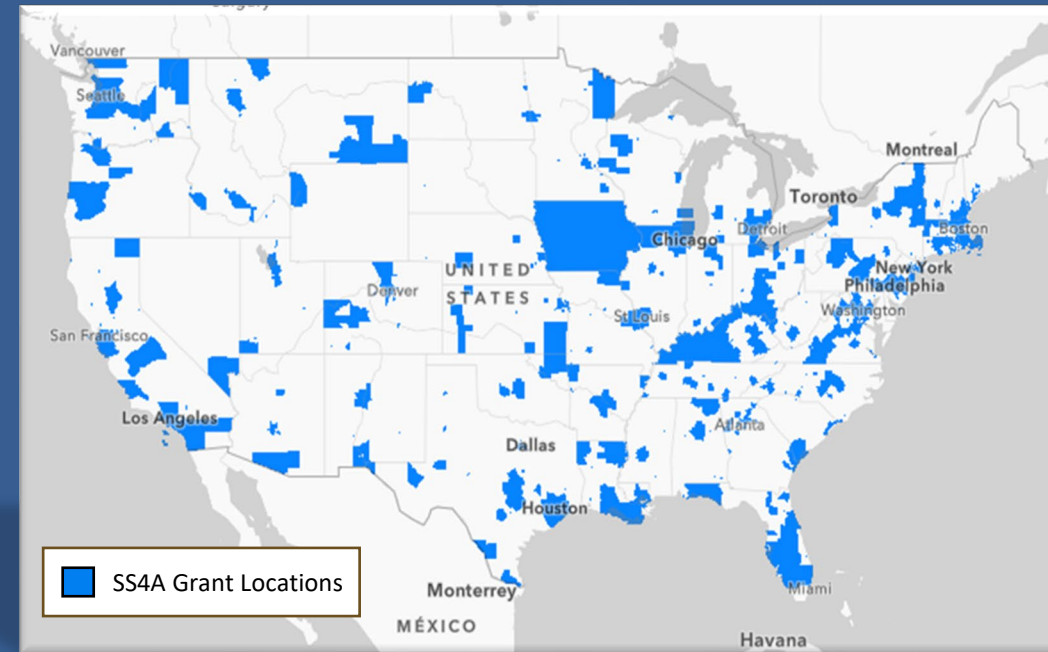
- Regional Planning Organization
  - Transportation Planning
  - Economic Development
- Wasatch Back Rural Planning Organization
  - Each jurisdiction within Summit and Wasatch County
  - Plan and coordinate regional transportation projects within the region



# Safe Streets for All (SS4A) Grant Program

- Created by the Bipartisan Infrastructure Law
- Allocated \$1 Billion per year for five years
- Two Grant Types
  - Planning & Demonstration Grants
  - Implementation Grants

Mountainland Association of Governments  
(MAG) awarded a 2022 Planning Grant to  
complete a Safety Action Plan



# What is a Safety Action Plan?

A Safety Action Plan (SAP) is the basic building block to improve roadway safety by reducing and eliminating serious injury and fatal crashes. The SAP generally consists of these 8 steps:

## 1. Leadership Commitment

- *Adopt a goal to commit to reduce or eliminate fatalities and serious injuries*

## 2. Planning Structure

- *Form a committee to oversee plan development, implementation*

## 3. Safety Analysis

- *Existing conditions, historical crash trends, high risk locations*

## 4. Engagement & Collaboration

- *Public and relevant stakeholders, for community representation and feedback*



# What is a Safety Action Plan?

## 5. Equity

- *Developed through a plan using inclusive and representative processes*

## 6. Policy & Process Change

- *Assess the current policies and plans to identify opportunities to improve how processes prioritize transportation safety*

## 7. Strategy & Project Selection

- *Phased set of projects and strategies*

## 8. Progress & Transparency Methods

- *Measure progress over time after an Action Plan is adopted*





# MAG Extra Efforts

1. Identify packages of safety projects for final 3 years (2024, 2025, 2026) of SS4A Implementation Grants Prepare engineering concepts for projects
  - Up to \$600 M available each year
2. Elevate safety in the MAG planning and project prioritization processes
  - Countermeasure toolkits
  - Safe System policies



# Countermeasure Sample Project Types



Speed Limit Changes



Crosswalk Visibility



Median Refuge Islands



Road Diets



Curve Delineation



Access Management



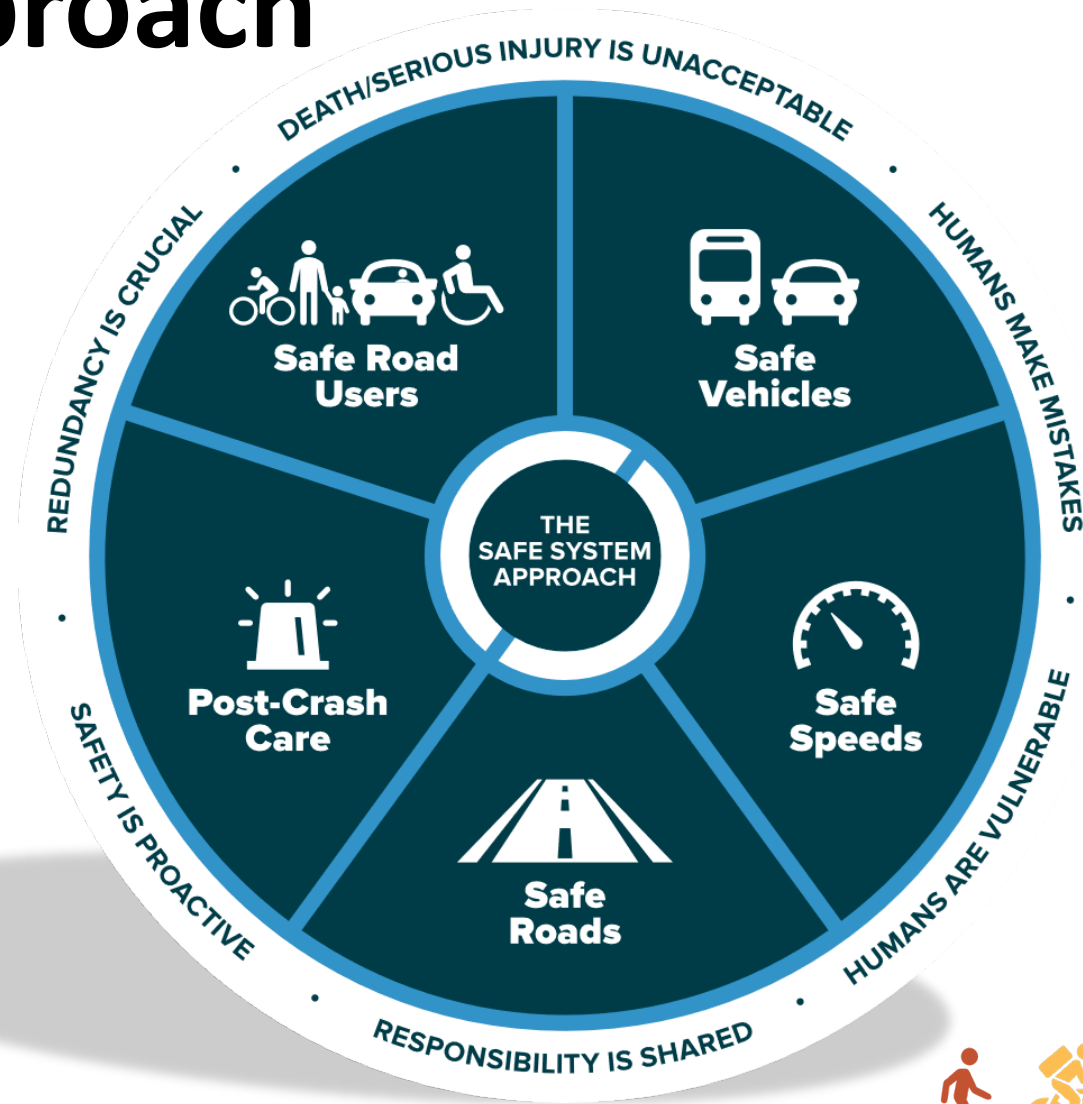
Signal Timing Changes



Rumble Strips



# Safe System Approach



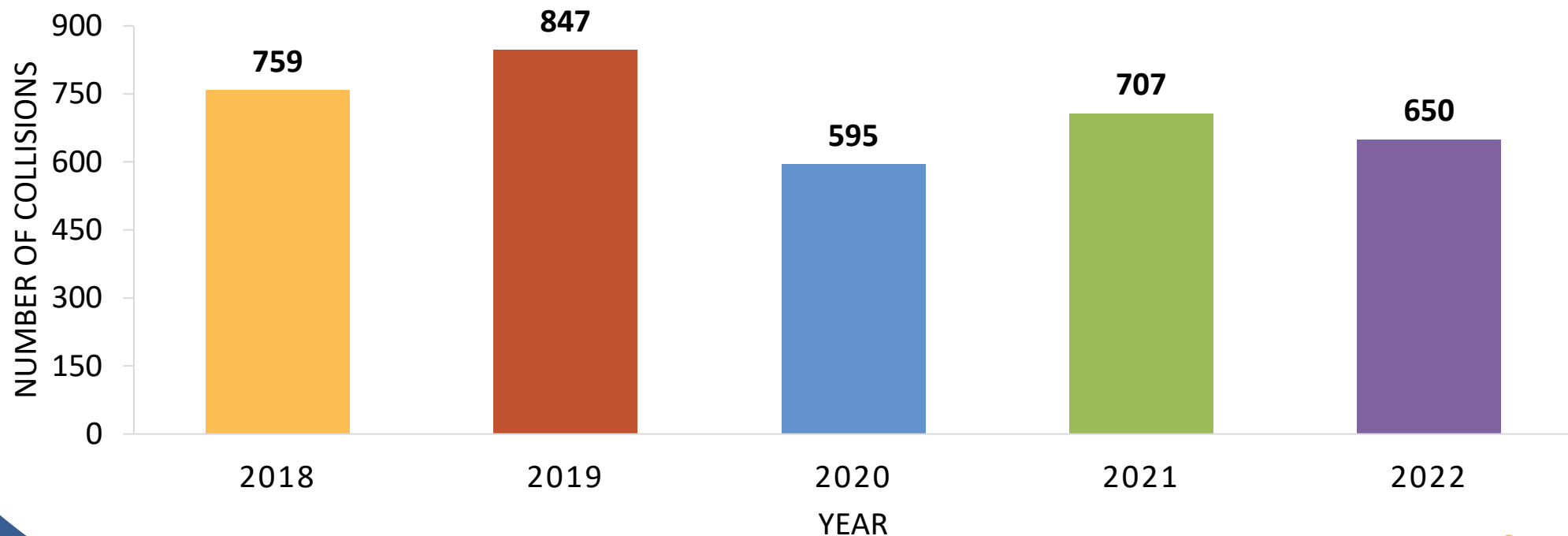
The Safe System Approach, FHWA 2023



# Summit County: Collisions

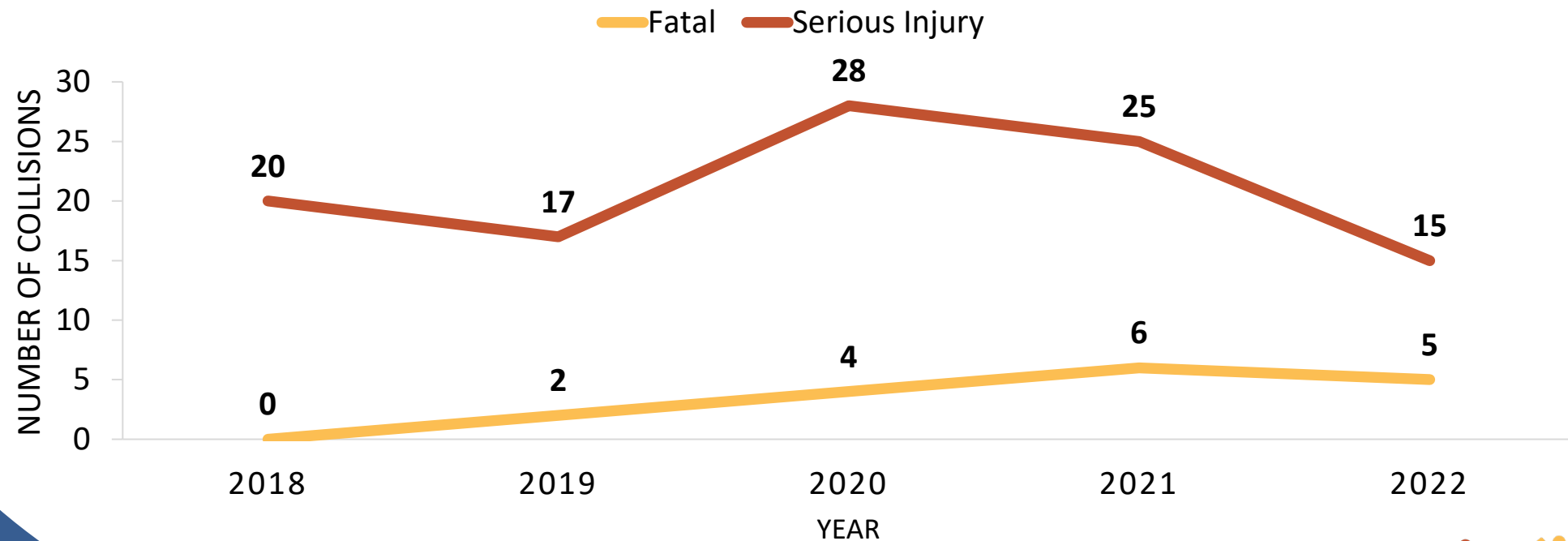
- 3,558 collisions from 2018-2022\*

\*Not including interstate collisions



# Summit County: Collisions

- 0.5 % of collisions were fatal
- 3 % resulted in serious injury



# Summit County: Collisions

- 90 collisions involved active transportation users



**50 collisions**

10 resulted in severe  
injury or fatality



**40 collisions**

6 resulted in severe  
injury or fatality



# Summit County: collisions



**3%**  
involved active  
transportation users



**21%**  
involved a vehicle  
leaving the roadway



**21%**  
involved speeding



**29%**  
occurred at night



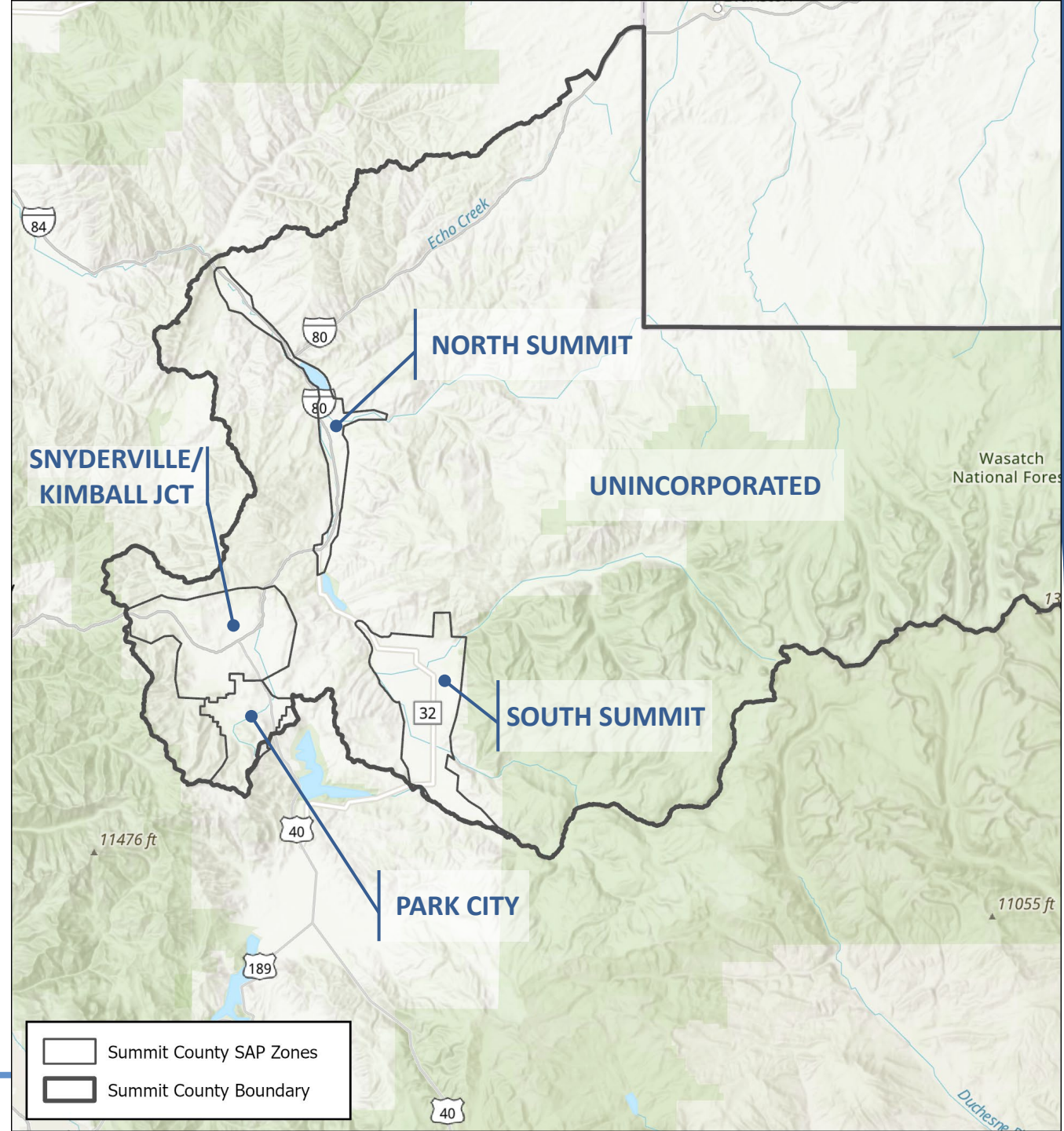
# Geographic Zones

Summit County was divided into 5 analysis zones:

1. North Summit
2. Park City
3. Snyderville/  
Kimball Jct.
4. South Summit
5. Unincorporated

**Why:** Analyze enough collisions to get meaningful results

**How:** Grouped jurisdictions with similar characteristics

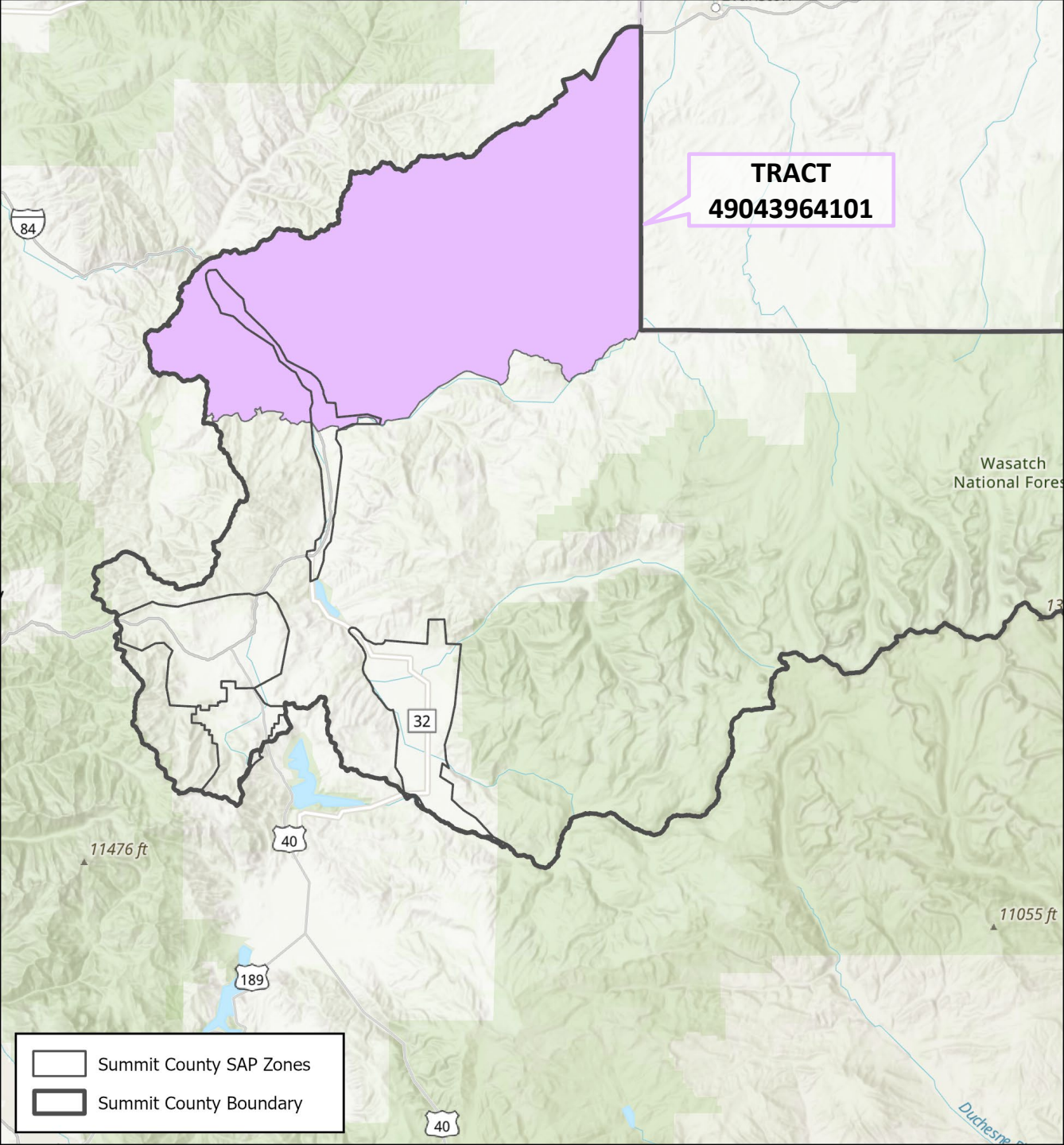




# Demographic Snapshot

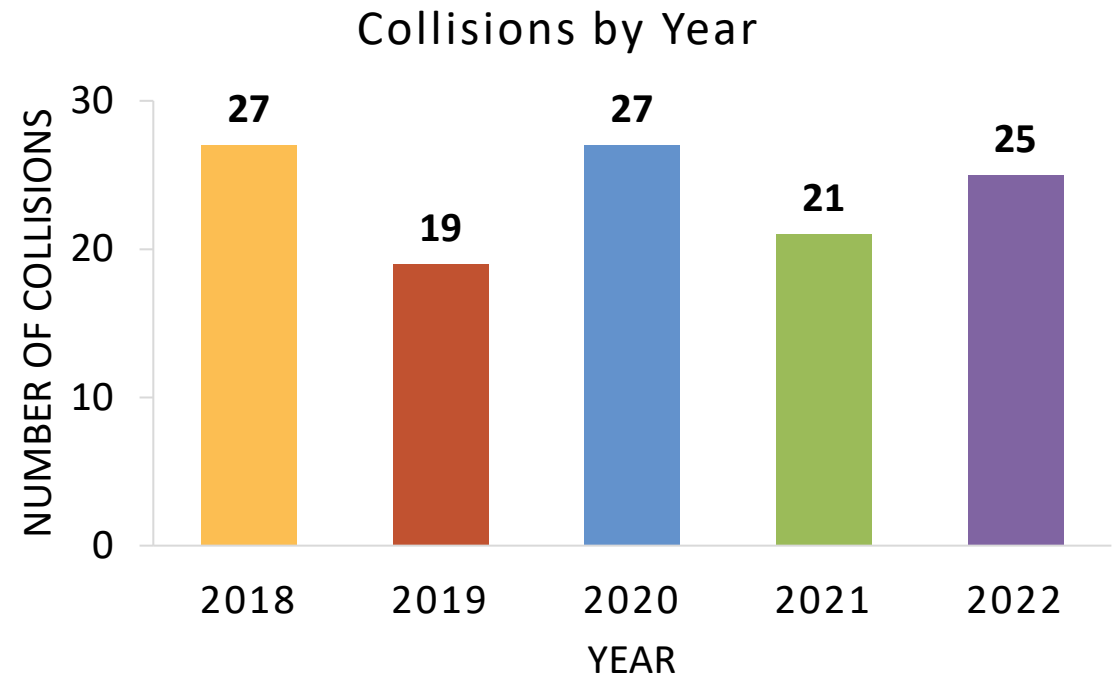
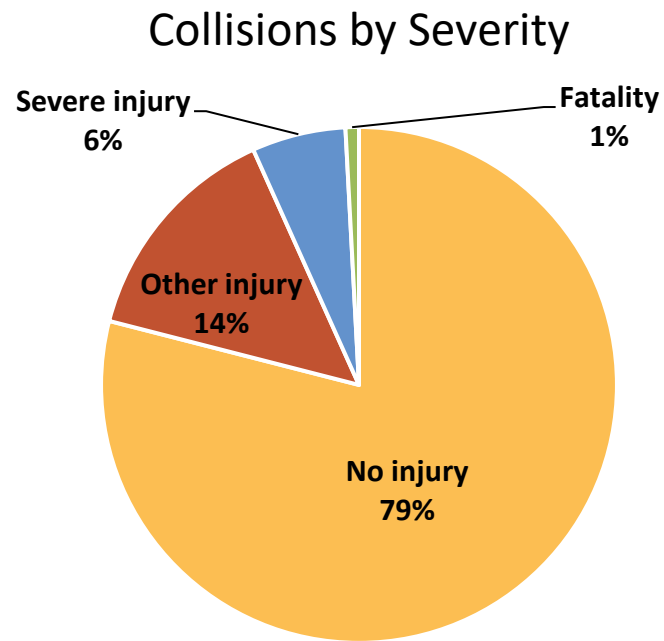
Disadvantaged communities are important considerations for analysis and recommendations

What is a disadvantaged community?



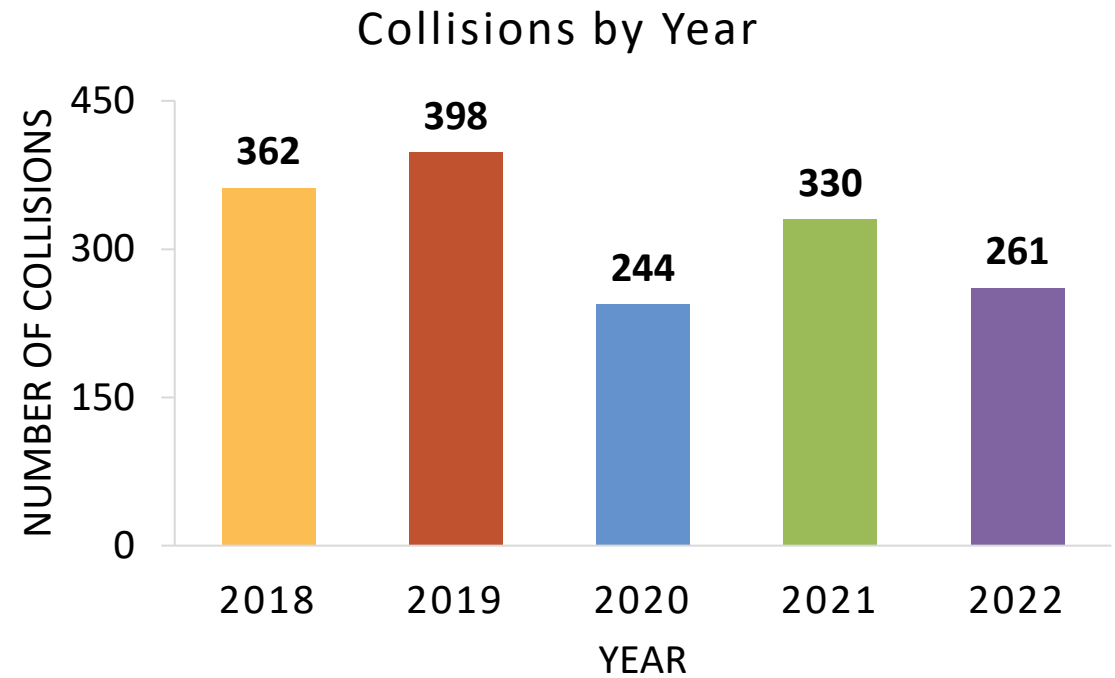
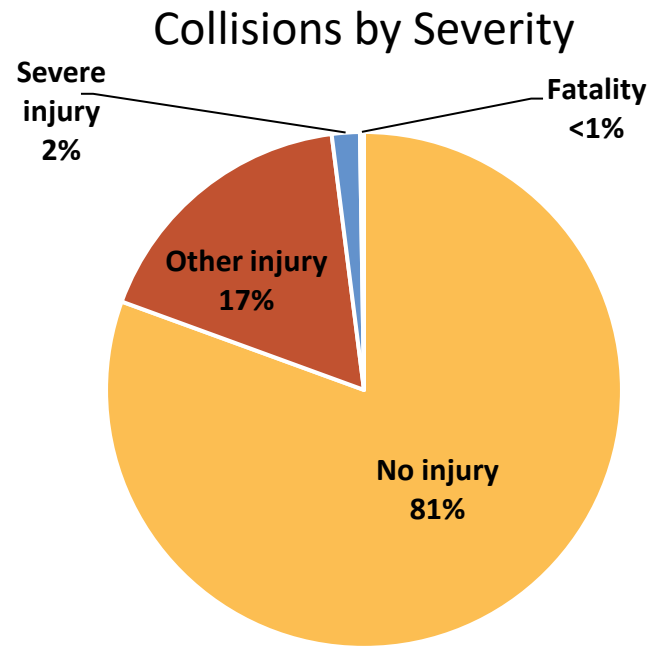
# North Summit: Collisions

- 119 total collisions from 2018-2022



# Park City: Collisions

- 1,595 total collisions from 2018-2022



# Park City: collisions

- 51 collisions involved active transportation users



**29 collisions**

3 resulted in severe injury or fatality



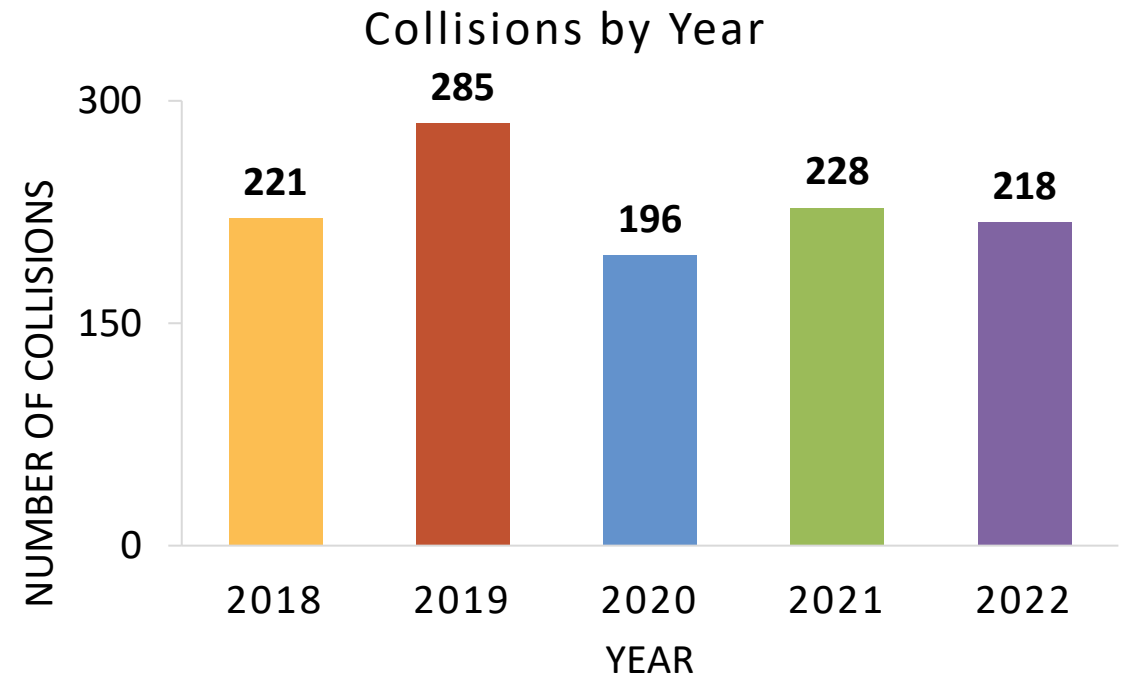
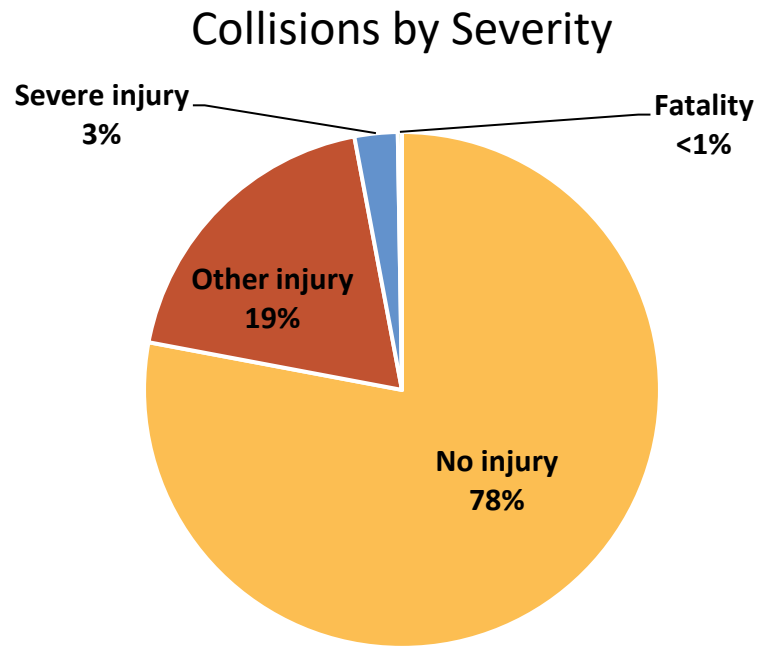
**22 collisions**

4 resulted in severe injury or fatality



# Snyderville/Kimball Junction: Collisions

- 1,148 total collisions from 2018-2022



# Snyderville/Kimball Junction: Collisions

- 29 collisions involved active transportation users



**16 collisions**

5 resulted in severe  
injury or fatality



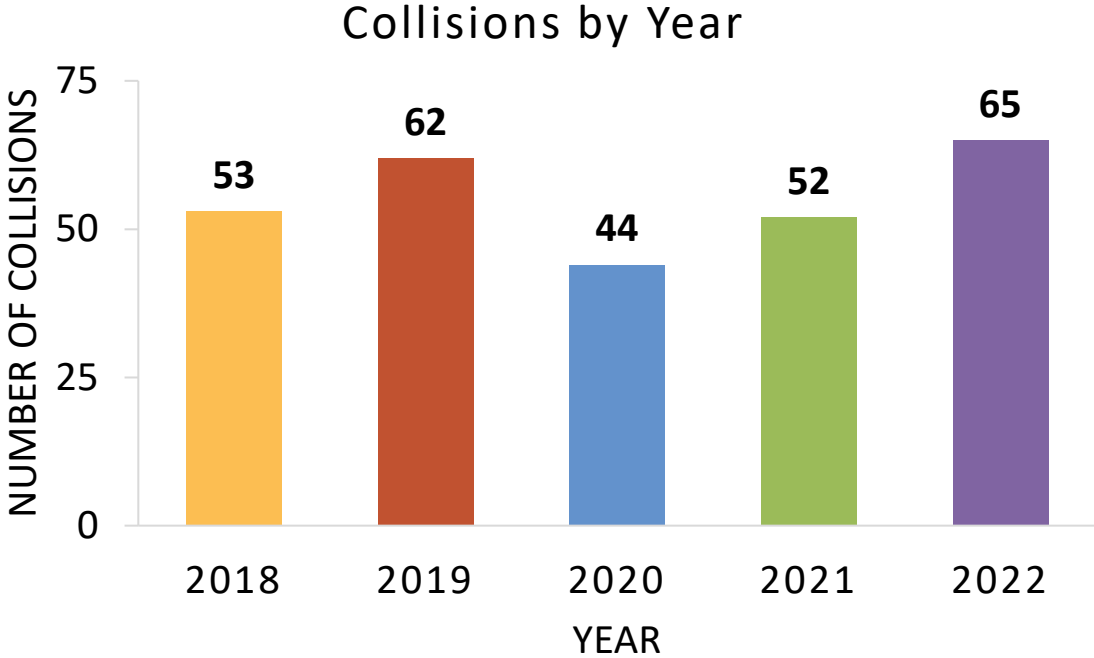
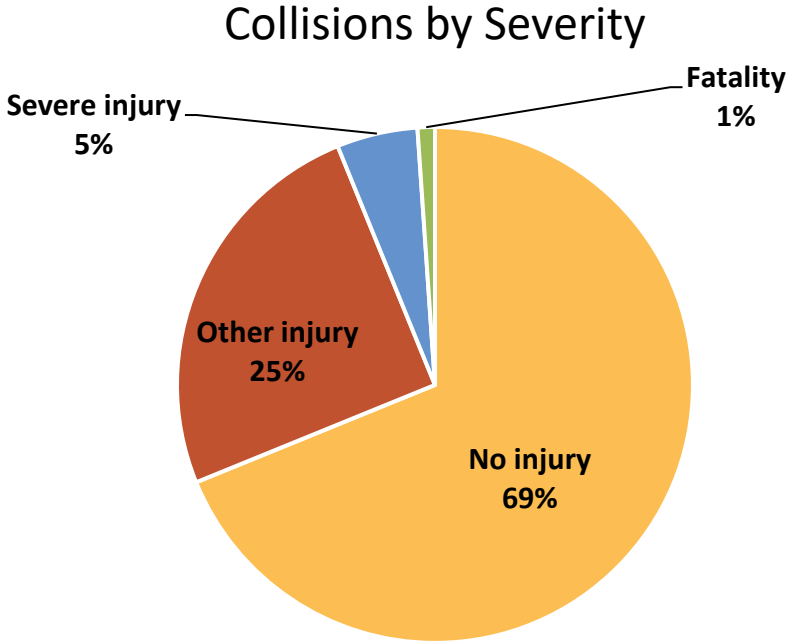
**13 collisions**

0 resulted in severe  
injury or fatality



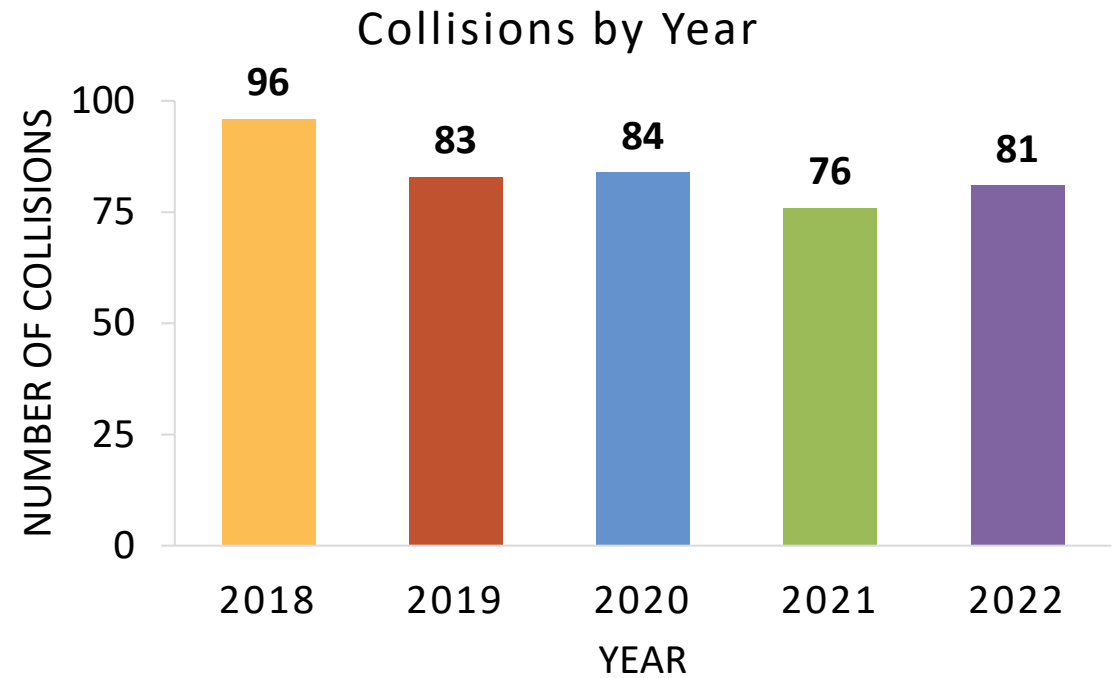
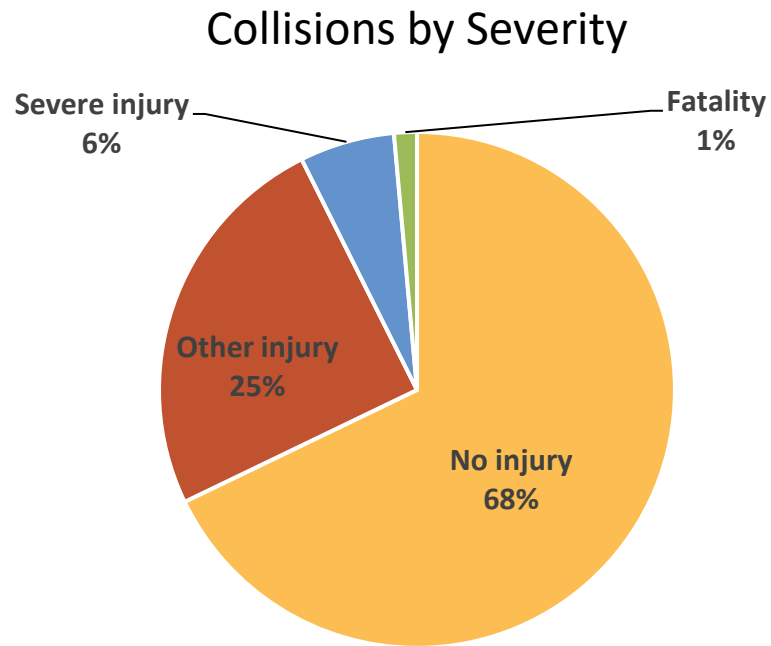
# South Summit: Collisions

- 276 total collisions from 2018-2022



# Unincorporated Summit County: Collisions

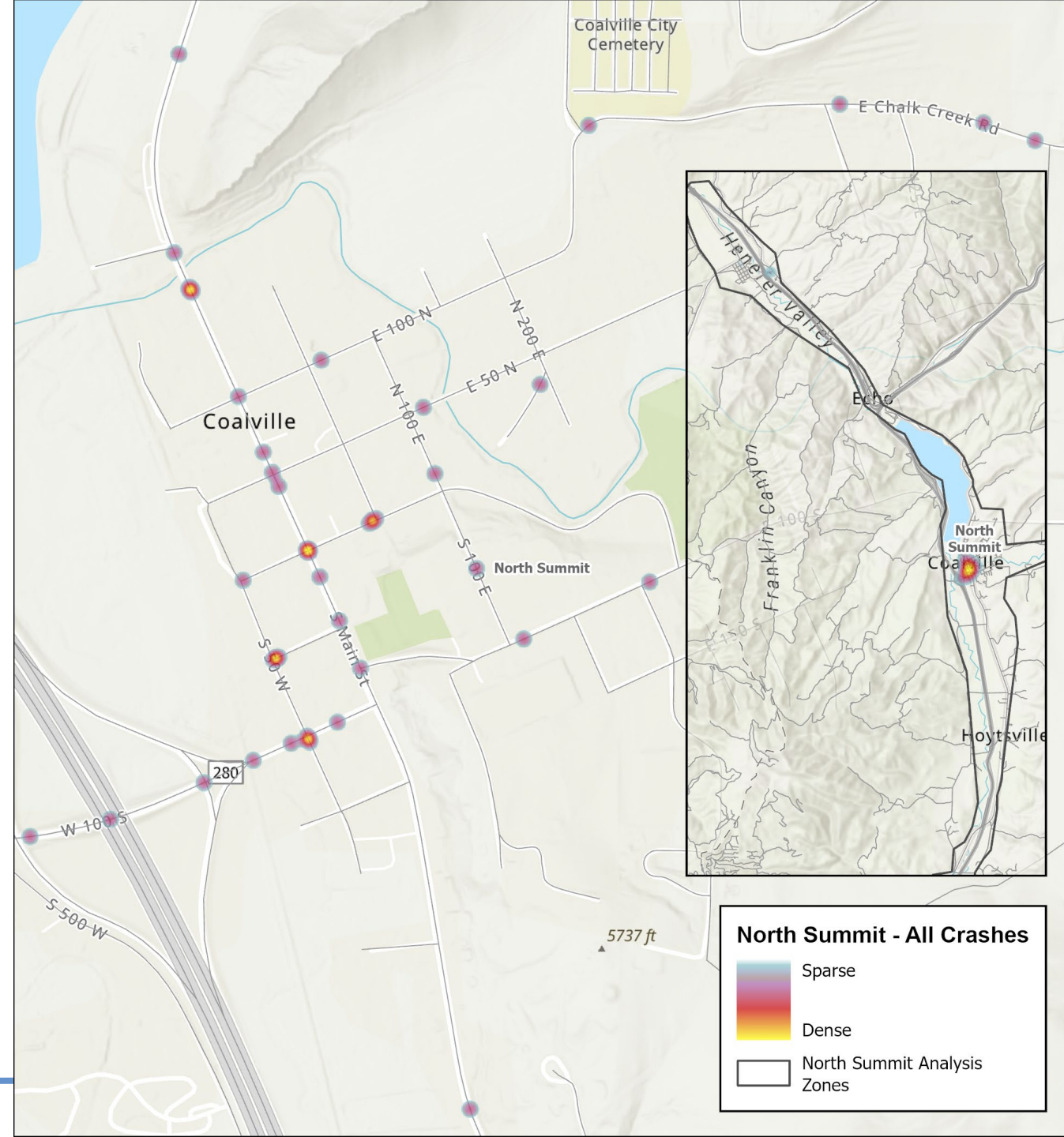
- 420 total collisions from 2018-2022





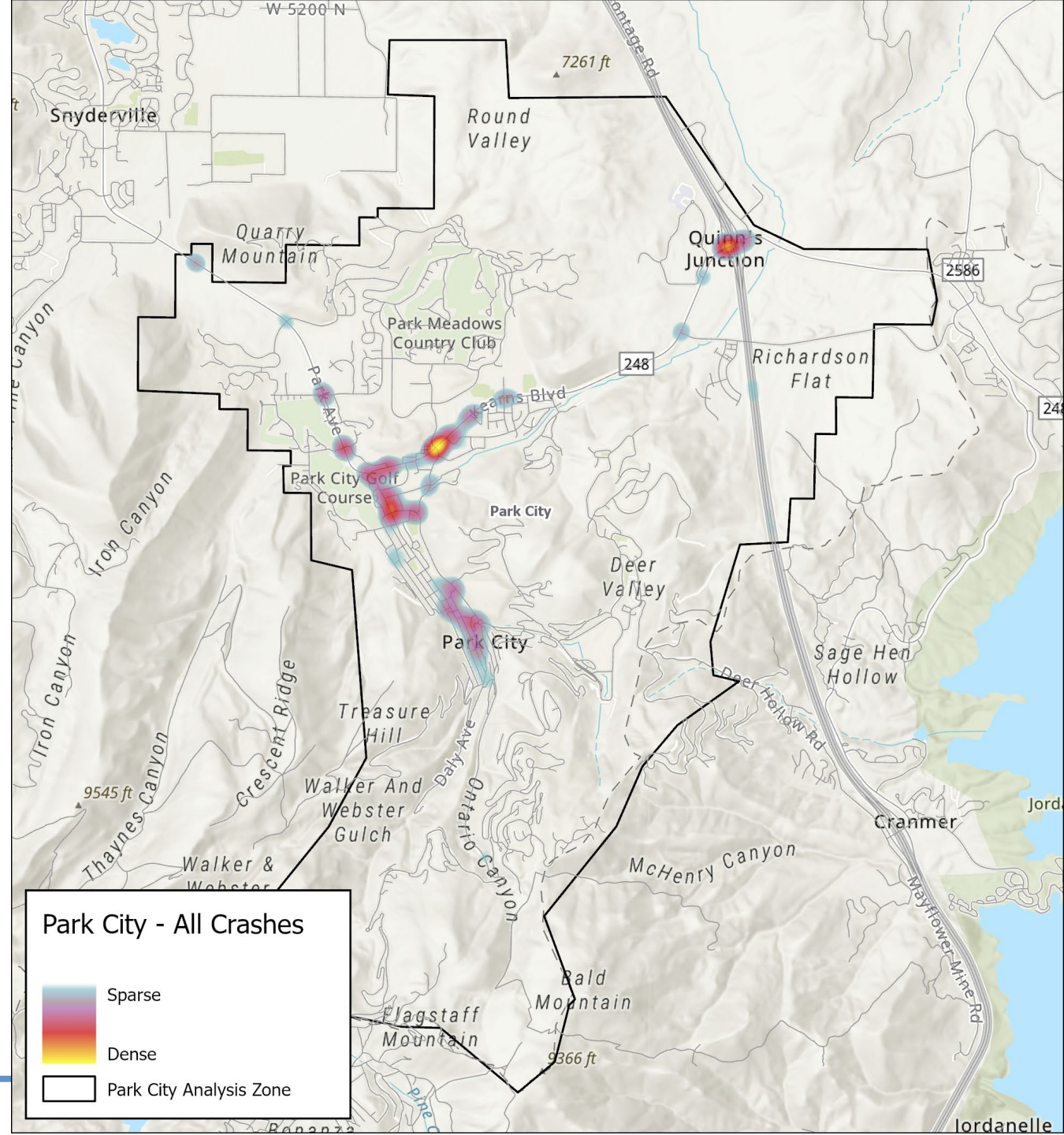
# North Summit: Hot Spot Locations

- **All collisions:**
  - Downtown Coalville
- **Severe injury/fatal collisions:**
  - Chalk Creek Road
  - Hoytsville Road



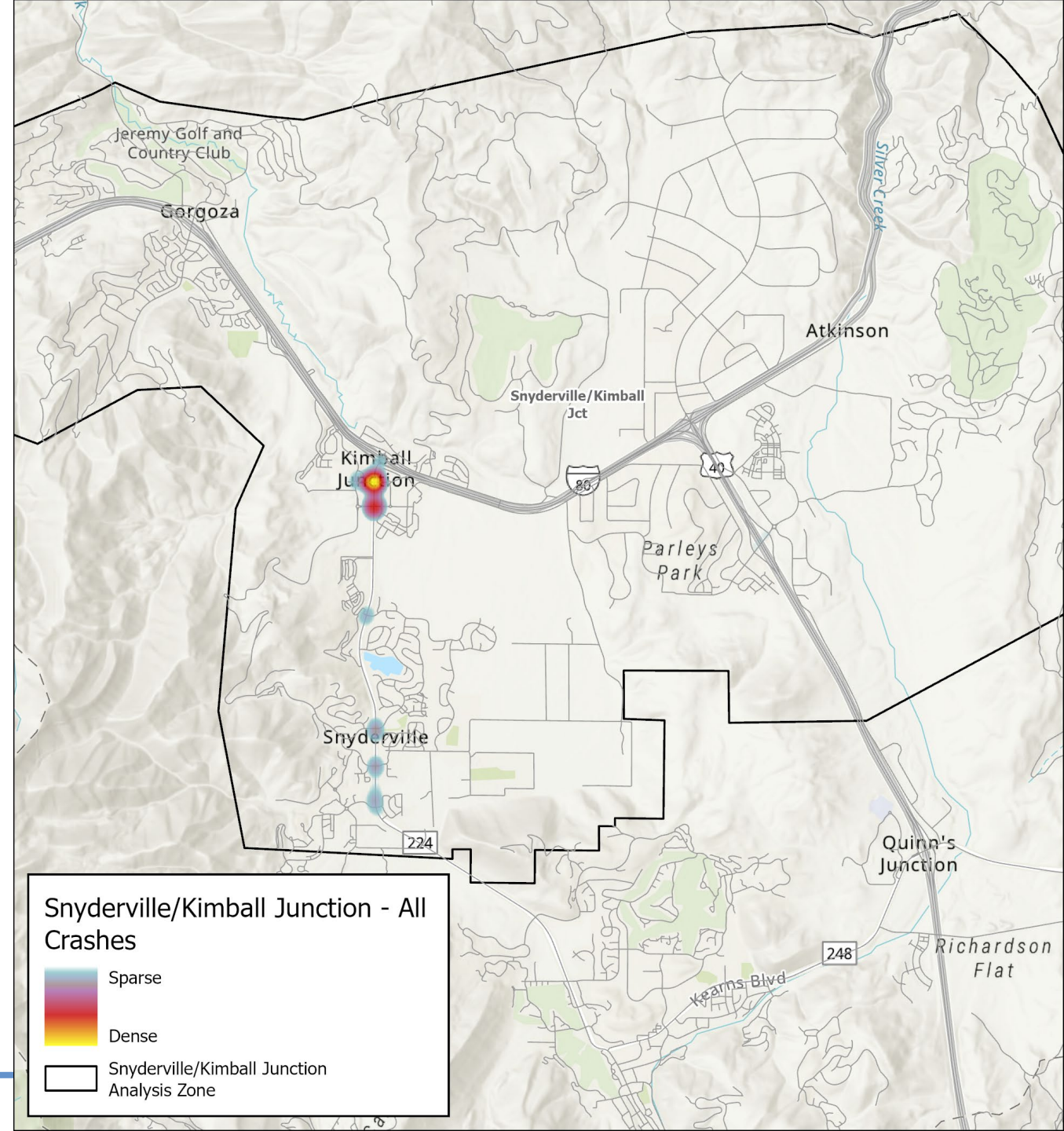
# Park City: Hot Spot Locations

- **All collisions:**
  - Kearns Boulevard & Monitor Drive
- **Severe injury/fatal collisions:**
  - Deer Valley Drive & Marsac Avenue
- **Bike/pedestrian collisions:**
  - Kearns Boulevard & Monitor Drive



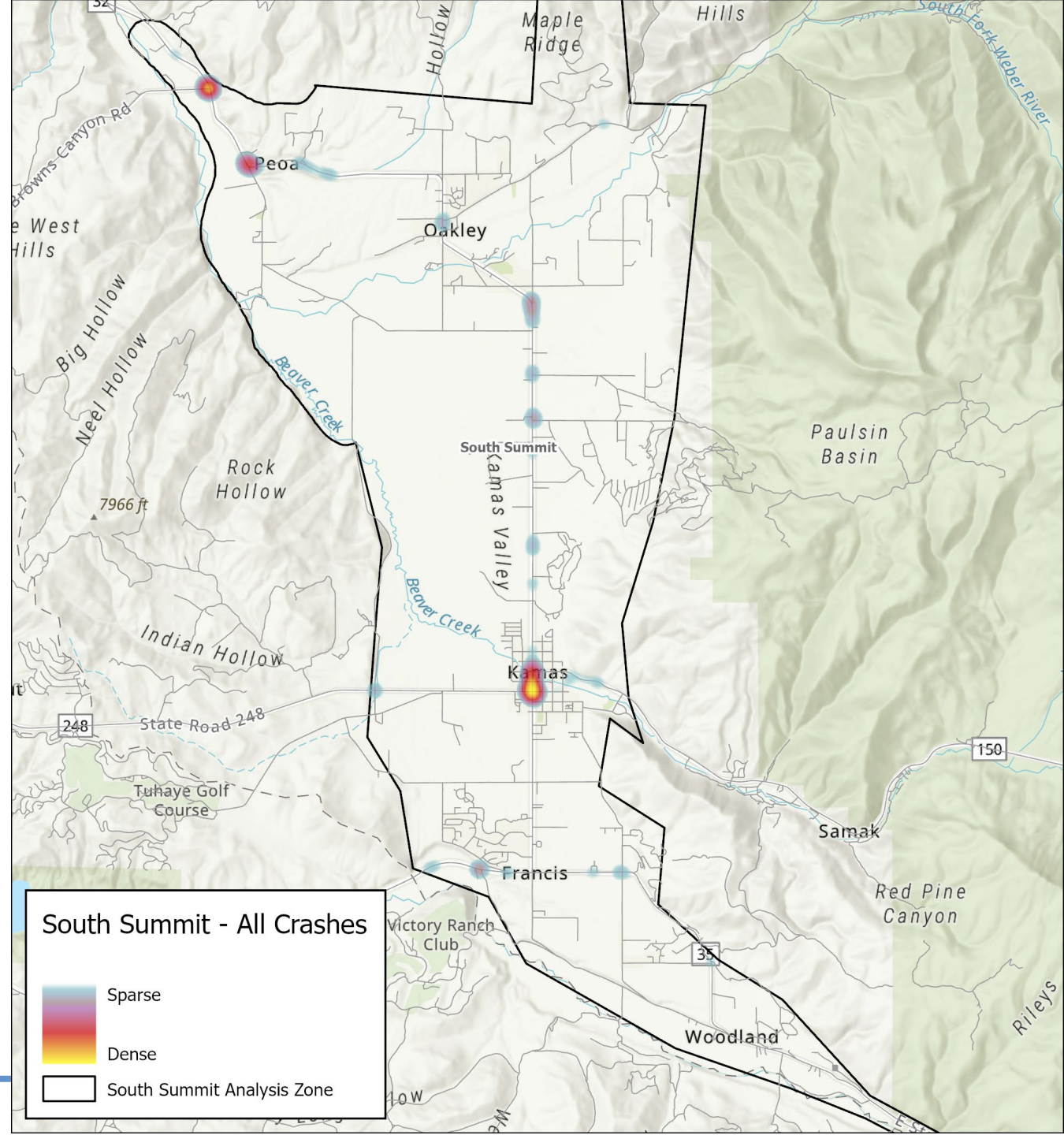
# Snyderville/ Kimball Junction: Hot Spot Locations

- **All collisions:**
  - SR-224 & Ute Boulevard
- **Severe injury/fatal collisions:**
  - SR-224 & Ute Boulevard
- **Bike/pedestrian collisions:**
  - Landmark Drive



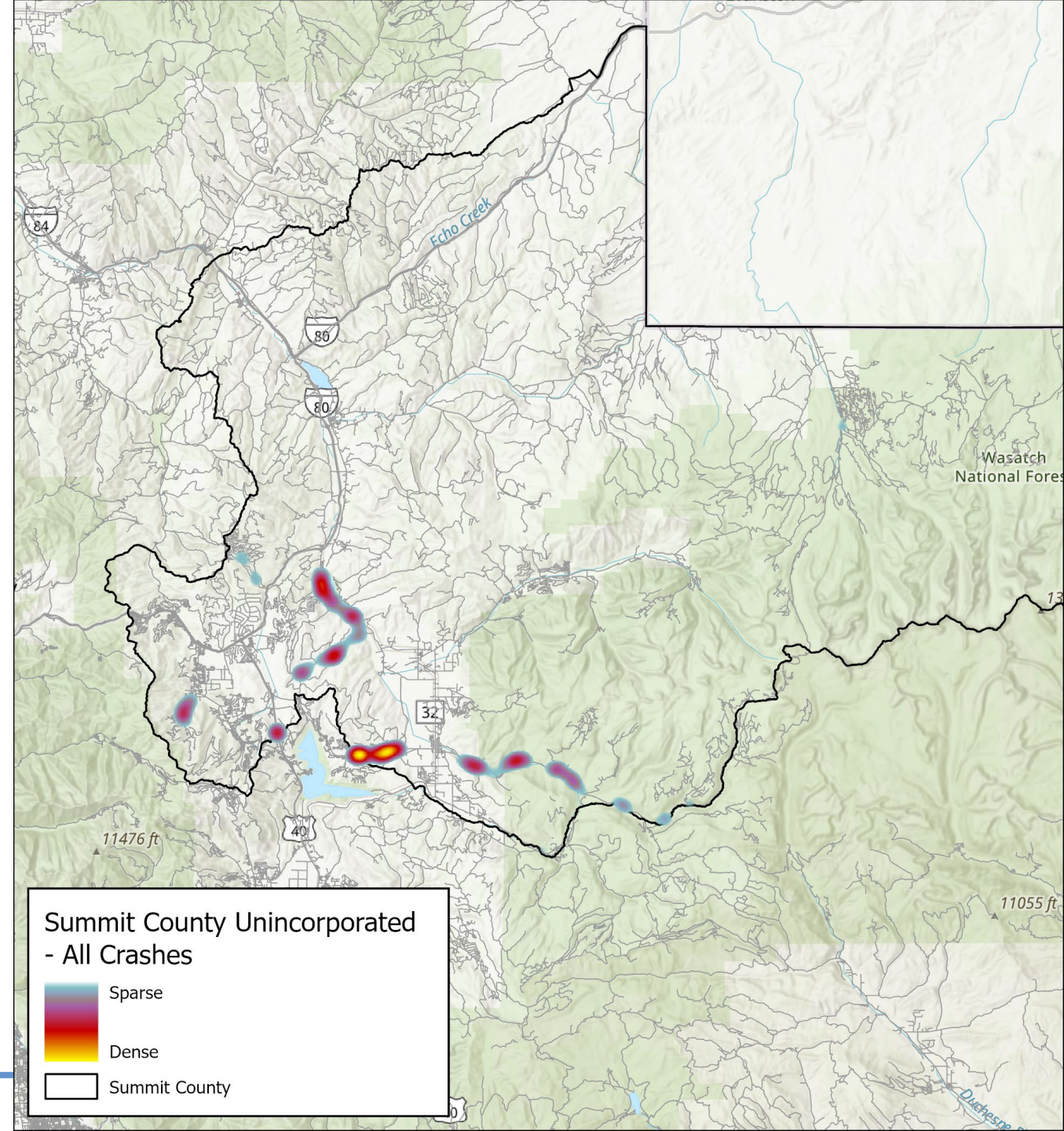
# South Summit: Hot Spot Locations

- **All collisions:**
  - Main Street in Kamas
- **Severe injury/fatal collisions:**
  - SR-32 in Peoa
- **Bike/pedestrian collisions:**
  - SR-32 from Oakley to Kamas



# Unincorporated Summit County: Hot Spot Locations

- **All collisions:**
  - SR-248
- **Severe injury/fatal collisions:**
  - SR-150/Mirror Lake Scenic Byway
- **Bike/pedestrian collisions:**
  - East Canyon Road



# North Summit:

## Overrepresented Serious Injury/Fatal Crash Characteristics



13%  
involved distracted  
driving



50%  
involved impaired  
driving



25%  
involved  
motorcycles



25%  
involved bicycles



38%  
involved roadway  
departure



25%  
involved speeding



25%  
involved  
older adults

These rates are higher than county AND state rates.



# Park City:

## Overrepresented Serious Injury/Fatal Crash Characteristics



13%  
involved bicyclists



53%  
involved  
intersections



16%  
involved heavy  
vehicles



65+  
22%  
involved  
older adults

These rates are higher than county AND state rates.



# Snyderville/Kimball Junction: Overrepresented Serious Injury/Fatal Crash Characteristics



12%  
involved  
distracted driving



15%  
involved  
pedestrians



59%  
involved  
intersections



24%  
involved speeding

16-19

27%  
involved  
teen drivers



12%  
involved heavy  
vehicles



3%  
involved  
drowsy drivers

These rates are higher than county AND state rates.





# South Summit:

## Overrepresented Serious Injury/Fatal Crash Characteristics



24%  
involved aggressive  
driving



51%  
involved impaired  
driving



33%  
involved roadway  
departure

16-19

15%  
involved teen drivers



4%  
involved lack of  
safety restraints

These rates are higher than county AND state rates.



# Unincorporated Summit County: Overrepresented Serious Injury/Fatal Crash Characteristics



19%  
involved impaired  
driving



26%  
involved  
motorcycles



65%  
involved roadway  
departures



32%  
involved speeding

65+

19%  
involved older  
adults

These rates are higher than county AND state rates.

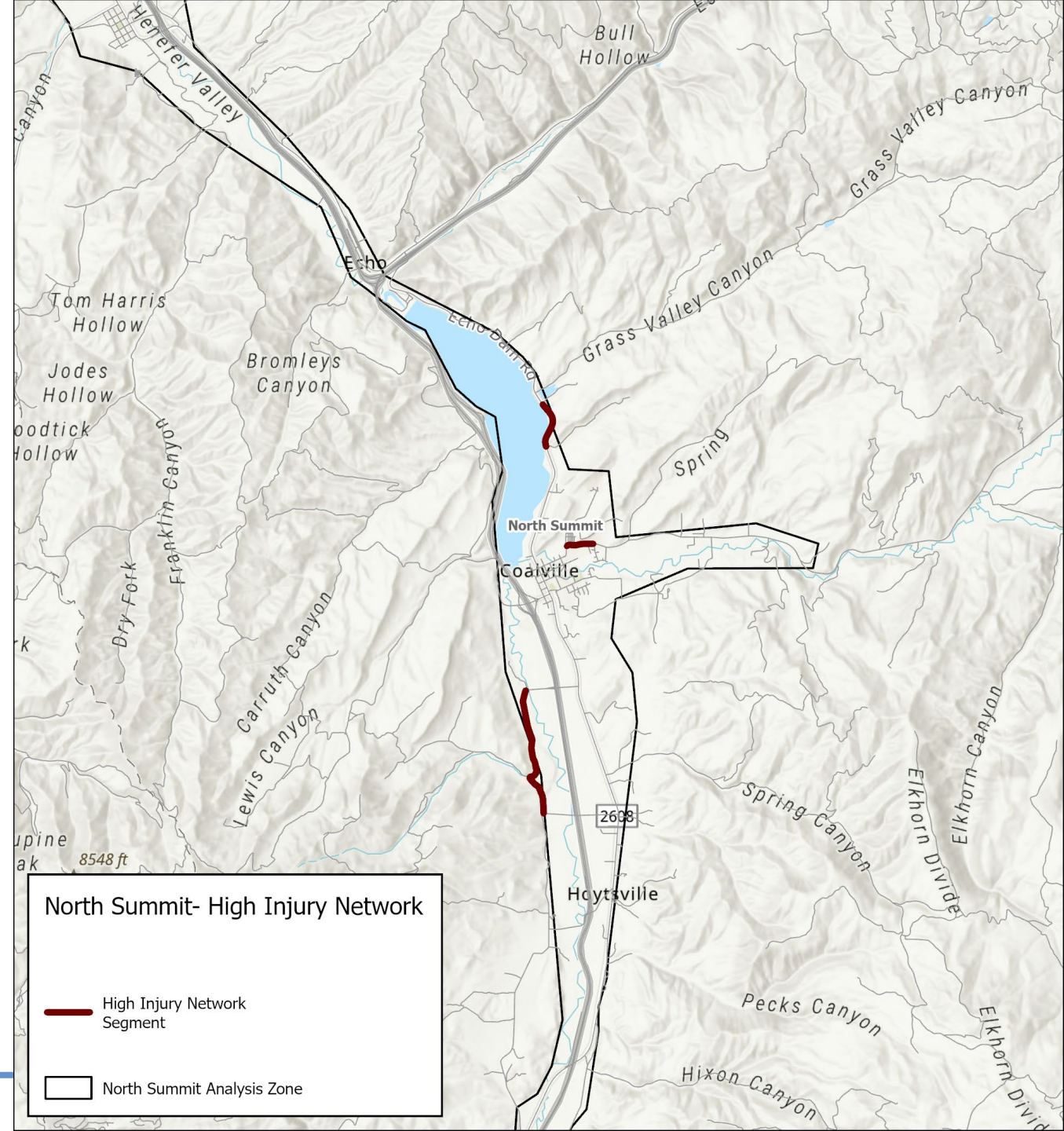


# North Summit: High Injury Network

**10% of roads have 75% of crashes**  
resulting in severe injury or fatality

Top locations:

- Chalk Creek Road
- Echo Dam Road
- West Hoytsville Road

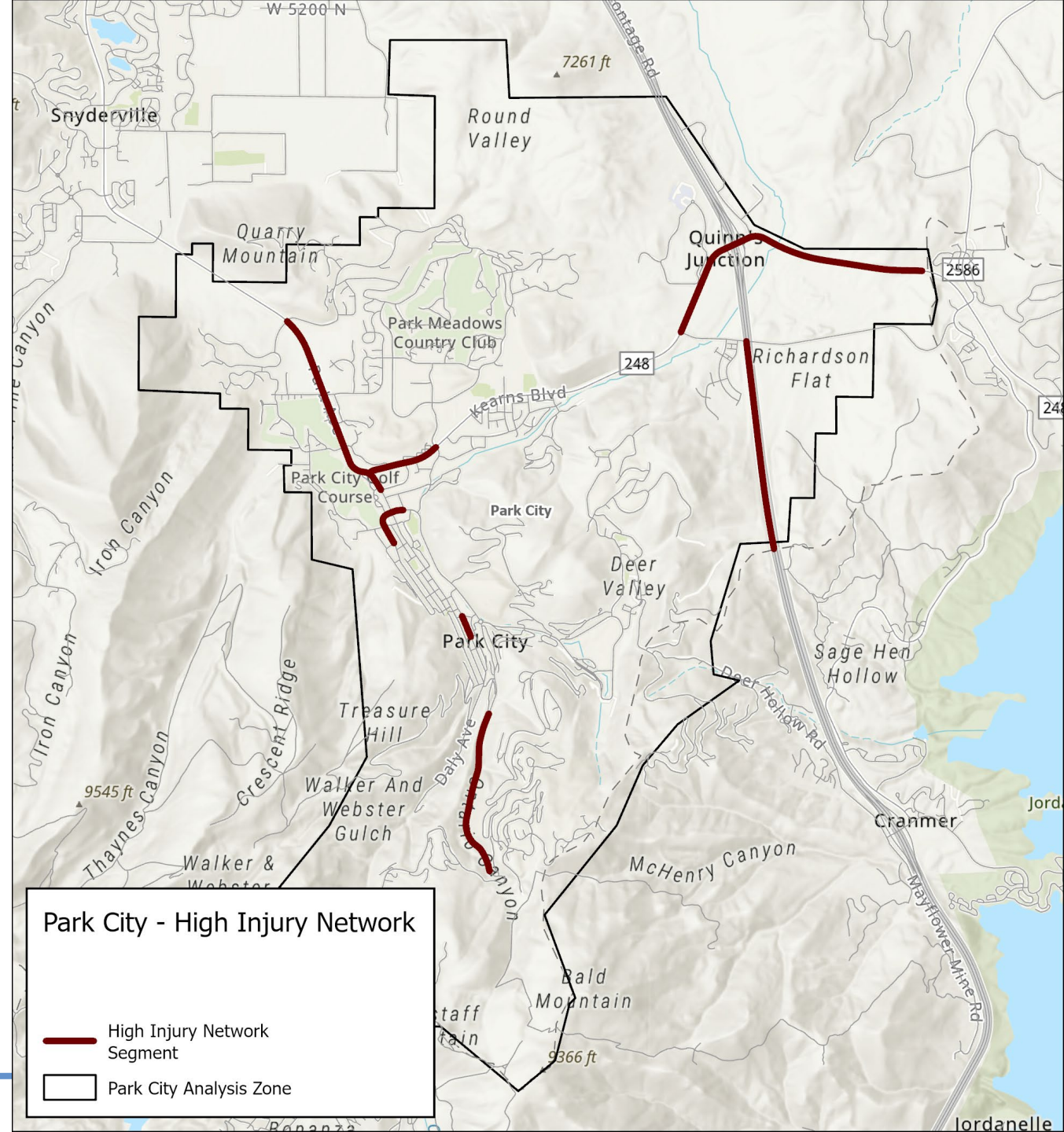


# Park City: High Injury Network

**10% of roads have 63% of crashes**  
resulting in severe injury or fatality

Top locations:

- SR-224 (Marsac Avenue)
- Park Avenue
- Deer Valley Drive
- Kearns Boulevard

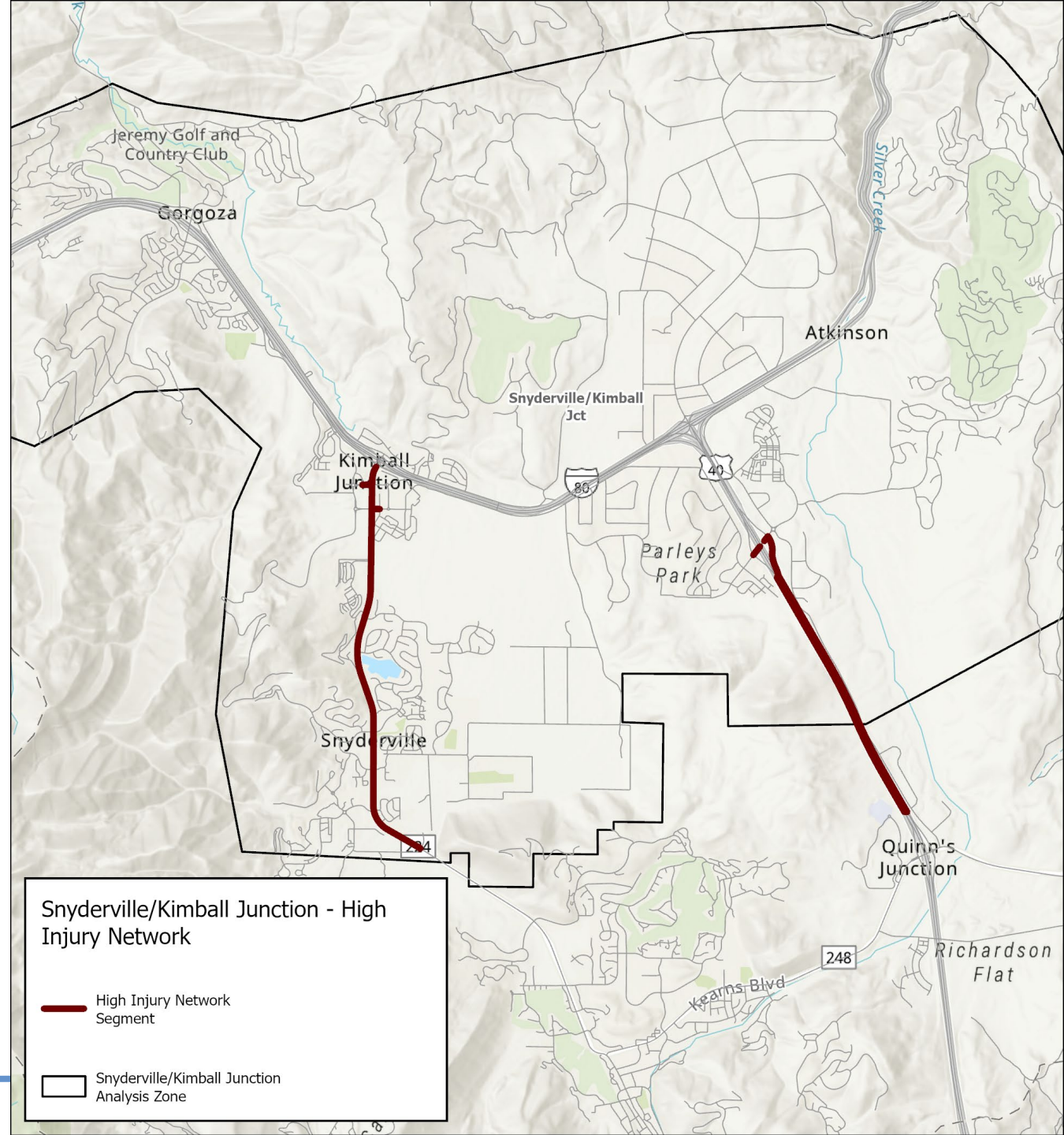


# Snyderville/ Kimball Junction: High Injury Network

**10% of roads have 63% of crashes**  
resulting in severe injury or fatality

Top locations:

- SR-224 (Kimball Junction)
- SR-224 (south of Snyderville)
- US-40 (north of Quinn's Junction)

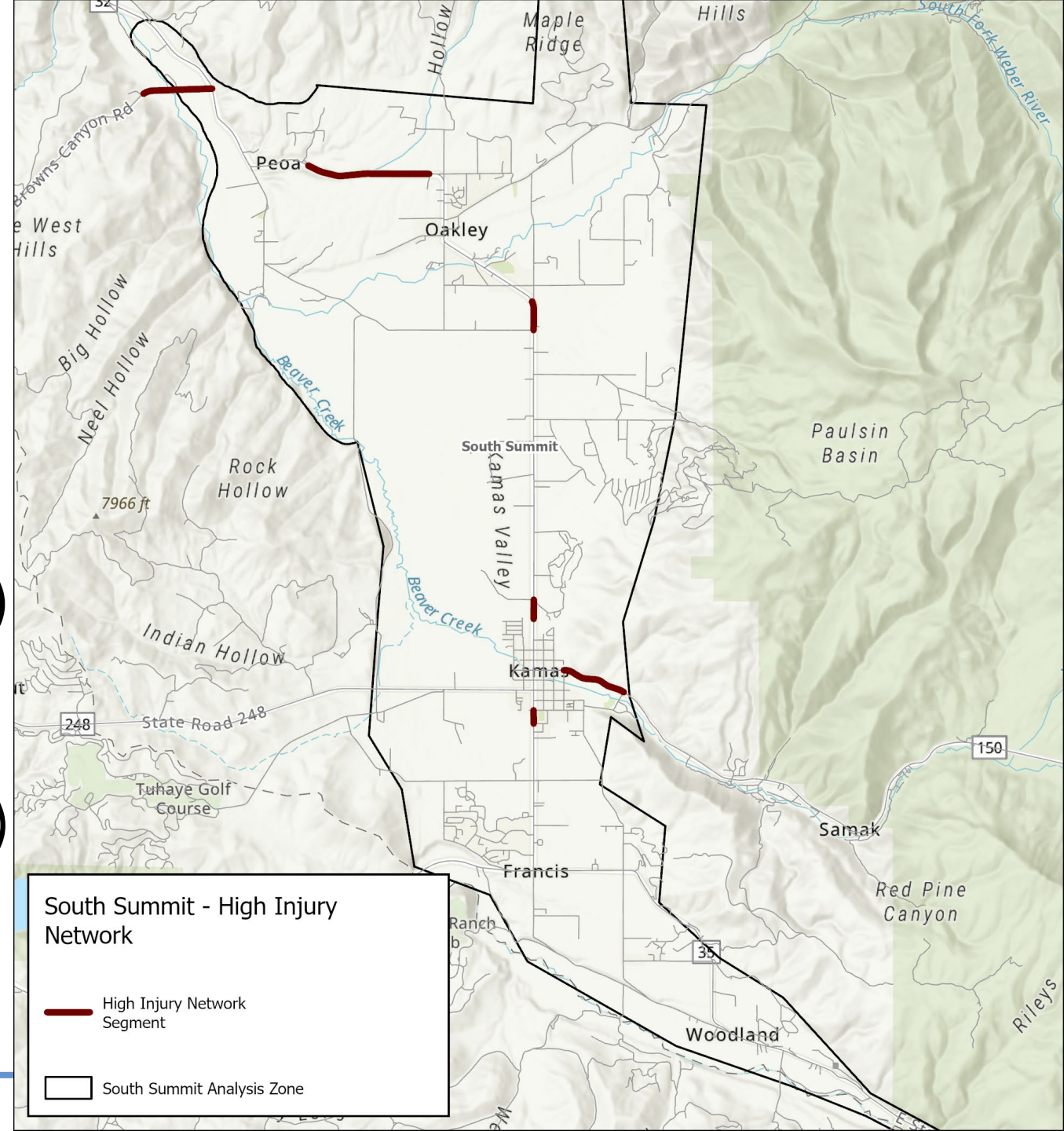


# South Summit: High Injury Network

**10% of roads have 59% of crashes**  
resulting in severe injury or fatality

Top locations:

- SR-32 (south of Oakley 4200 North)
- SR-32 (north Kamas Main Street)
- Center Street/SR-150 (Kamas)
- SR-32 (south Kamas Main Street)

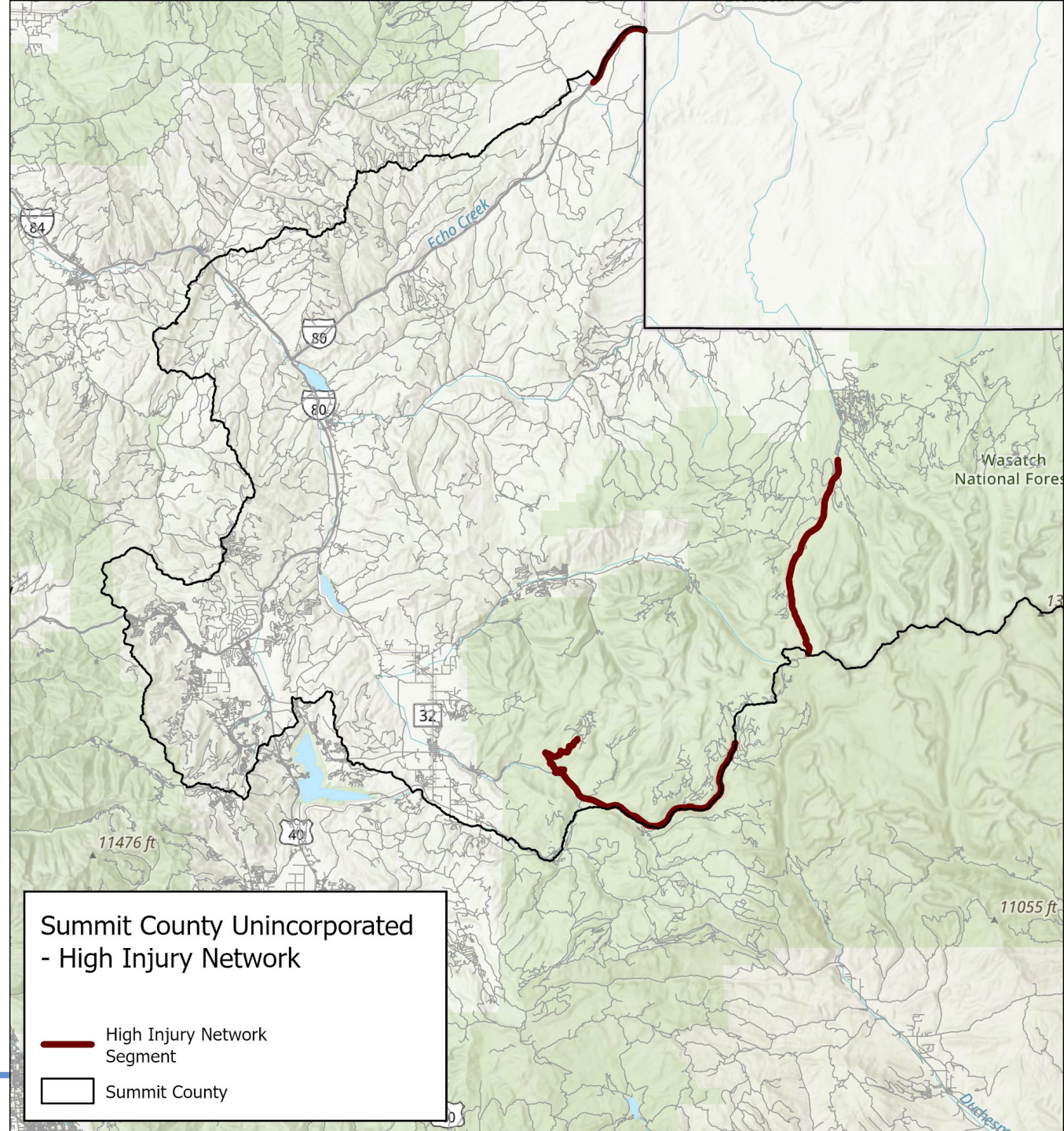


# Unincorporated Summit County: High Injury Network

**10% of roads have 17% of crashes**  
resulting in severe injury or fatality

Top locations:

- SR-150/Mirror Lake Scenic Byway
- Upper Setting Road (road to Upper Setting Trailhead)
  - I-80 (near Utah/Wyoming border)



# Next Steps

- Identify safety countermeasures
- Generate project lists
  - Near, mid, and long term
- Identify candidates for SS4A Implementation Grants
- Support projects for other funding sources
- Develop safety planning support tools





# Schedule







# Public Involvement

- Goal to inform community members and gather comments about roadway safety
- Recently finished pedestrian intercept surveys in Park City
- Will attend community events and hold another public meeting in spring 2024



# Take the Survey

- Tell us about your experiences and share information about roadway safety in your community
- Survey open through December 20<sup>th</sup>
- Survey available at [www.mountainlandsafestreeets.org](http://www.mountainlandsafestreeets.org)

**MOUNTAINLAND SAFE STREETS**    

---

### Study Overview

To improve safety for all roadway users (drivers, pedestrians, cyclists, people who use scooters, mobility devices, etc.), the **Mountainland Association of Governments (MAG)**, which develops transportation policies and guidance for Summit, Utah, and Wasatch counties, is developing a Safety Action Plan that will have a lasting change on safety culture in these communities.

Ultimately, the Plan will result in a series of **transportation improvement transportation projects** that MAG, and/or cities within its jurisdiction, can submit to the United States Department of Transportation to gain funding for implementation.

---

**What is your zipcode?\***

---

**What types of transportation do you use when you travel?**  
Choose all that apply

Car

Public Transit

Bike



# Connect With Us



Email: [safestreeets@mountainland.org](mailto:safestreeets@mountainland.org)



Call or text: 385-855-3292



Website: [www.mountainlandsafestreeets.org](http://www.mountainlandsafestreeets.org)



# Questions?

