

Welcome to the

MOUNTAINLAND
SAFE STREETS
FOR ALL

Virtual Open House – Utah County

The meeting will begin shortly after 6 p.m. to allow participants time to join the Zoom webinar.

To submit questions, click the Q&A button on your screen. Our team will be monitoring the questions and will answer as many as possible throughout the presentation.

Please note, this event is being recorded and will be available for viewing at www.mountainlandsafestreeets.org.

MOUNTAINLAND SAFE STREETS



Utah County Virtual Open House

December 6, 2023

Participant Instructions

1. TO SUBMIT A QUESTION

Click on the Q&A button at the bottom of the screen



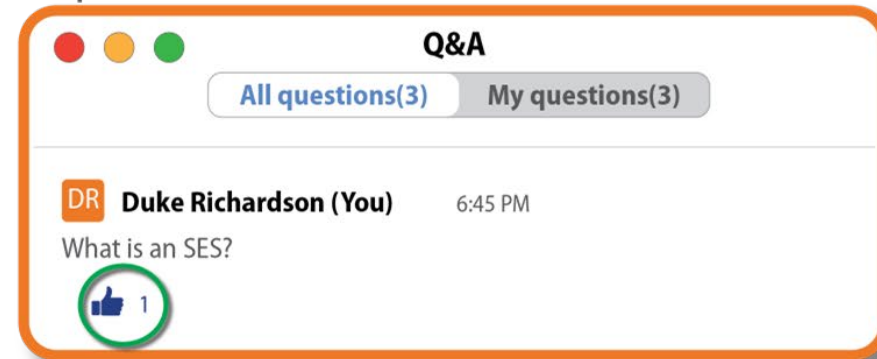
Type question in the Q&A Window

Type your question here...

Send anonymously

2. TO LIKE OR UPVOTE A QUESTION

Click on the "thumbs-up- button" underneath questions



This helps us to know how many people have the same question



Tonight's Presenters



CALVIN CLARK, PhD
Mountainland Association of Governments
Transportation Project Manager



CHARLES ALLEN
Parametrix
Project Manager



JEN SHRIBER
Parametrix
Planner III



STACEE ADAMS
Avenue Consultants
Public Engagement Manager



Mountainland Association of Governments (MAG)

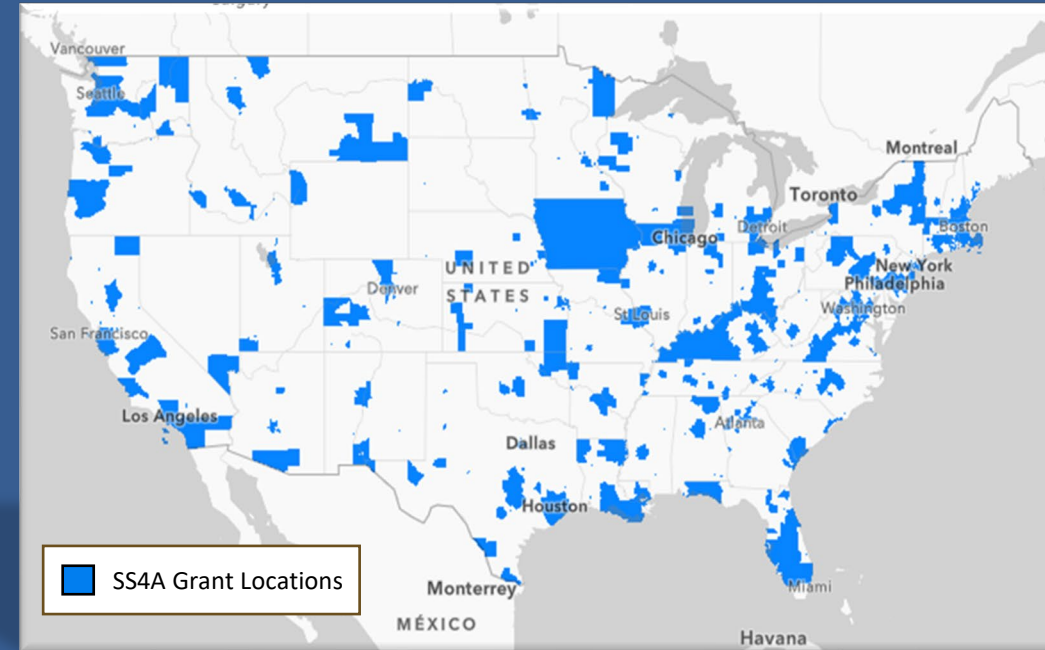
- Association of Governments
 - Informed Aging
 - Economic Development
 - Planning for Growth
- Metropolitan Planning Organization (MPO)
 - Each jurisdiction within Provo-Orem Metro Area (Utah County)
 - Plan and coordinate regional transportation projects within the region



Safe Streets for All (SS4A) Grant Program

- Created by the Bipartisan Infrastructure Law
- Allocated \$1 Billion per year for five years
- Two Grant Types
 - Planning & Demonstration Grants
 - Implementation Grants

MAG awarded a 2022 Planning Grant to complete a Safety Action Plan



What is a Safety Action Plan?

A Safety Action Plan (SAP) is the basic building block to improve roadway safety by reducing and eliminating serious injury and fatal crashes. The SAP generally consists of these 8 steps:

1. Leadership Commitment

- *Adopt a goal to commit to reduce or eliminate fatalities and serious injuries*

2. Planning Structure

- *Form a committee to oversee plan development, implementation*

3. Safety Analysis

- *Existing conditions, historical crash trends, high risk locations*

4. Engagement & Collaboration

- *Public and relevant stakeholders, for community representation and feedback*



What is a Safety Action Plan?

5. Equity

- *Developed through a plan using inclusive and representative processes*

6. Policy & Process Change

- *Assess the current policies and plans to identify opportunities to improve how processes prioritize transportation safety*

7. Strategy & Project Selection

- *Phased set of projects and strategies*

8. Progress & Transparency Methods

- *Measure progress over time after an Action Plan is adopted*



MAG Extra Efforts

1. Identify packages of safety projects for final 3 years (2024, 2025, 2026) of SS4A Implementation Grants Prepare engineering concepts for projects
 - Up to \$600 M available each year
2. Elevate safety in the MAG planning and project prioritization processes
 - Countermeasure toolkits
 - Safe System policies



Countermeasure Sample Project Types



Speed Limit Changes



Crosswalk Visibility



Median Refuge Islands



Road Diets



Curve Delineation



Access Management



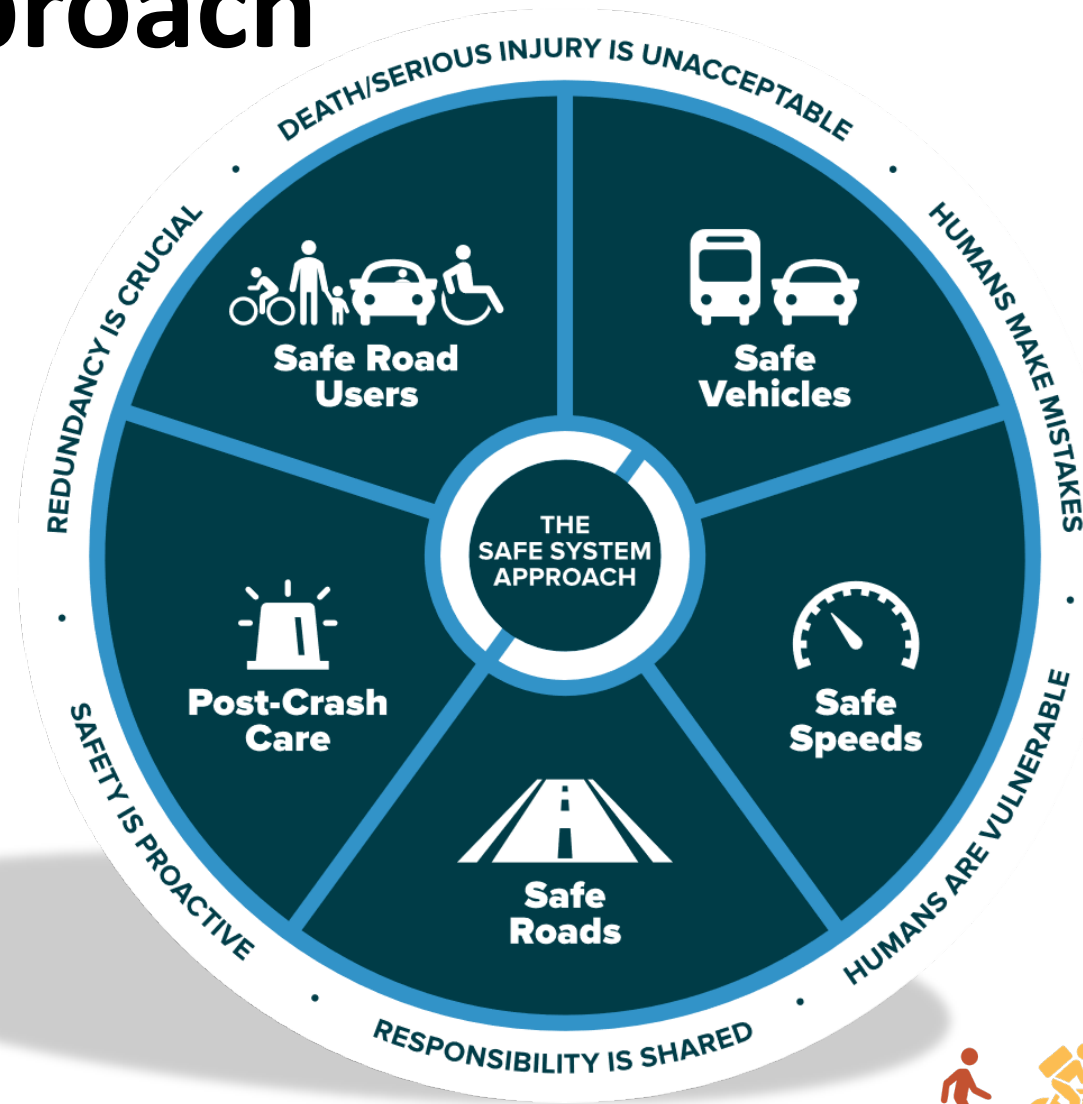
Signal Timing Changes



Rumble Strips



Safe System Approach



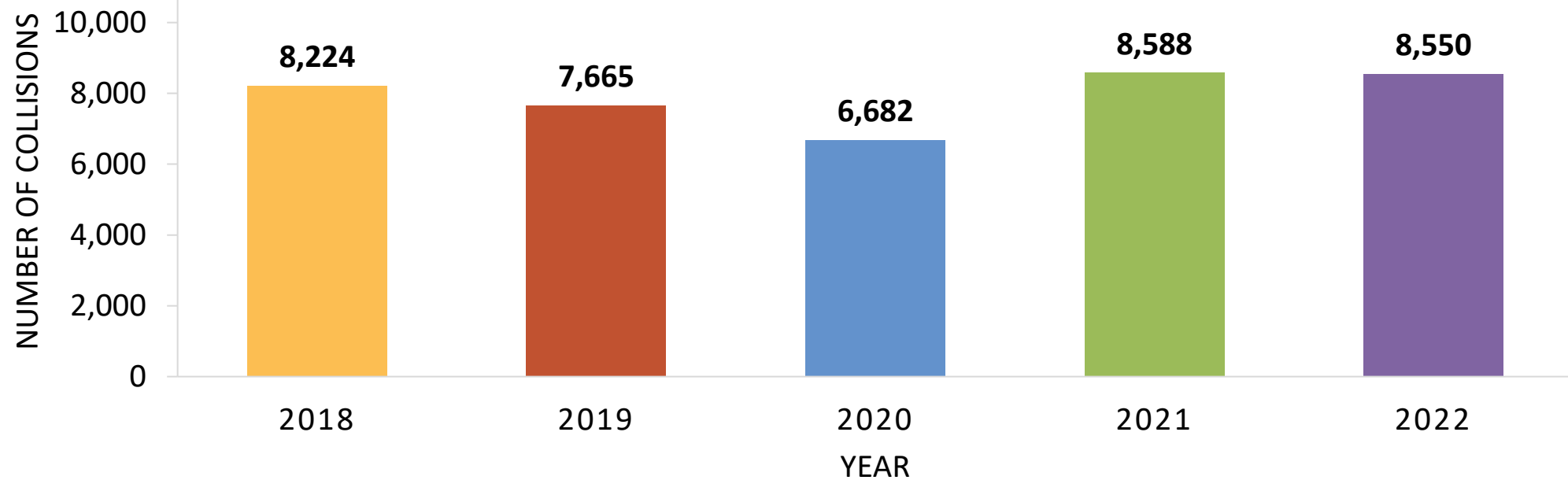
The Safe System Approach, FHWA 2023



Utah County: Collisions

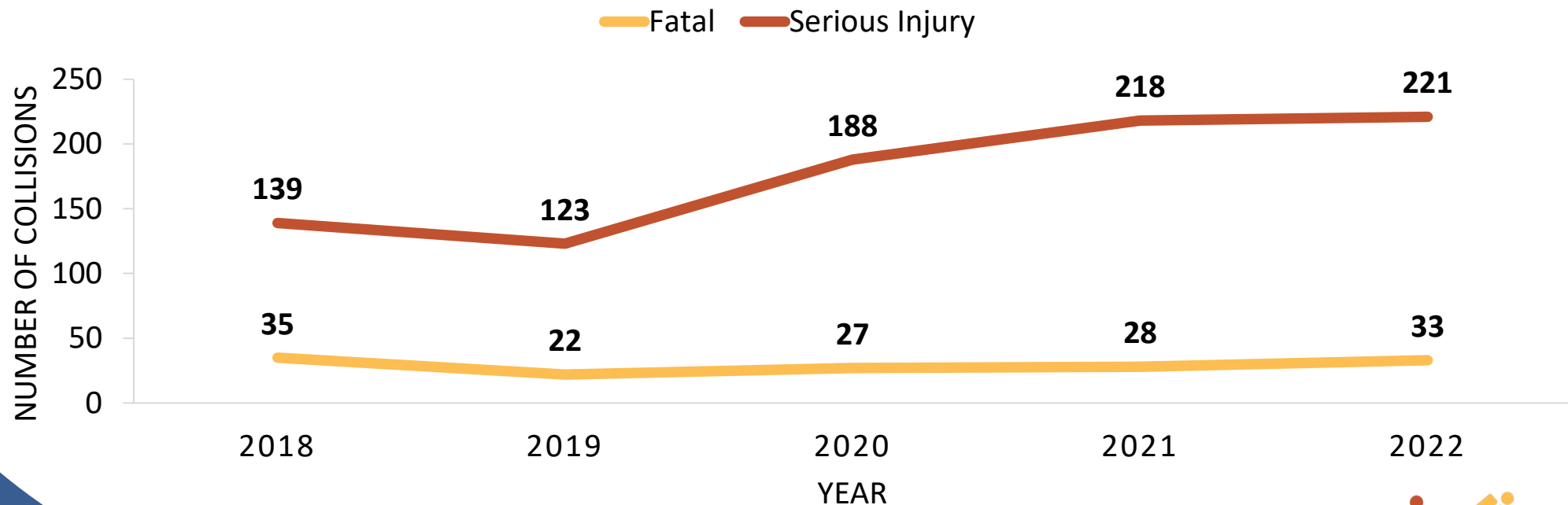
- 39,707 collisions from 2018-2022*

*Not including interstate collisions



Utah County: Collisions

- 0.4 % of collisions were fatal
- 2 % resulted in serious injury



Utah County: Collisions

- 1,083 collisions involved active transportation users



645 collisions

131 resulted in severe
injury or fatality



438 collisions

59 resulted in severe
injury or fatality



Utah County: Collisions

16-19

26%
involved a teenage
driver



13%
involved a vehicle
leaving the roadway



47%
Involved
intersections



23%
occurred at night



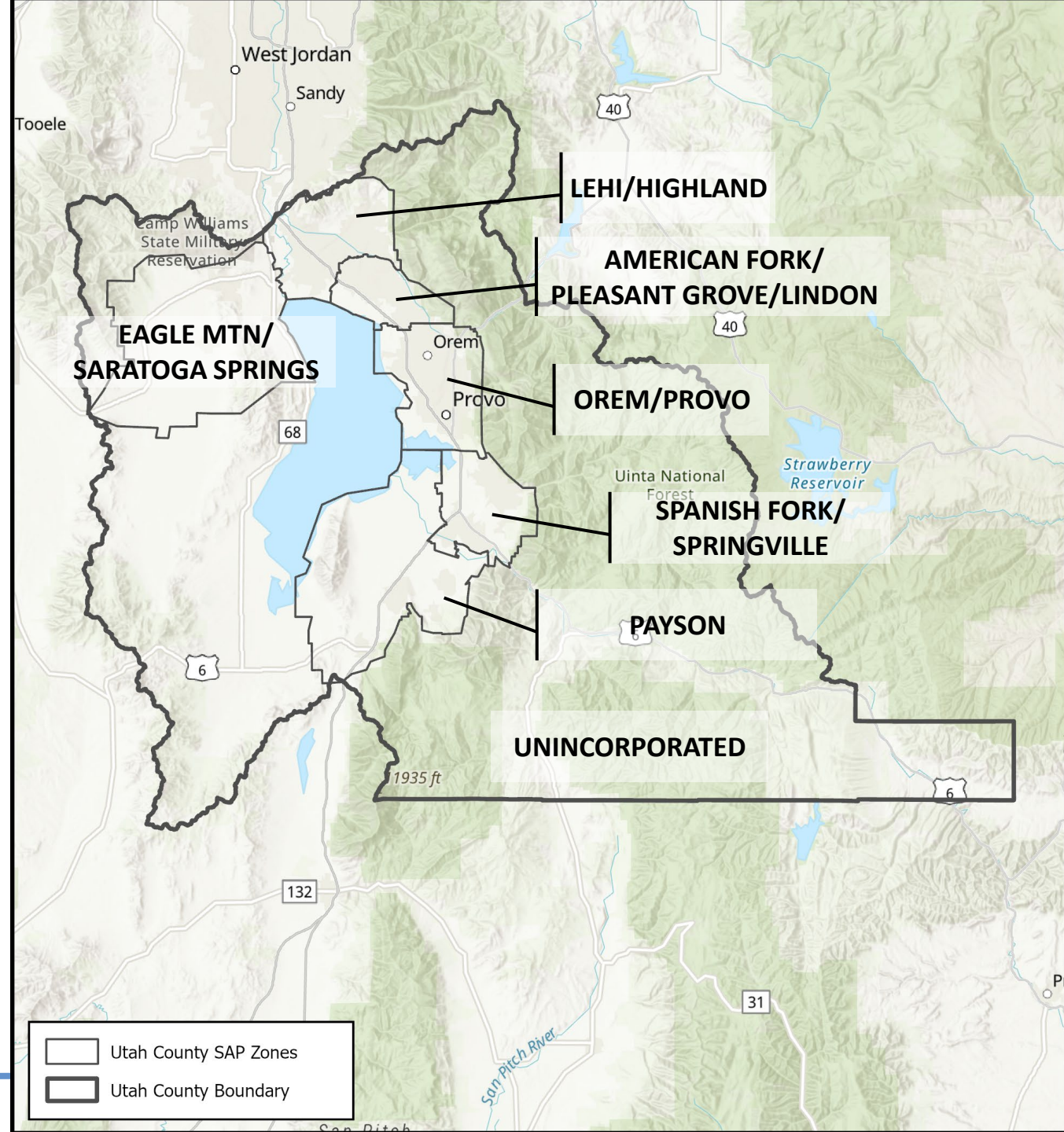
Geographic Zones

Utah County was divided into seven analysis zones

1. American Fork/
Pleasant Grove/Lindon
2. Eagle Mountain/
Saratoga Springs
3. Lehi/Highland
4. Orem/Provo
5. Payson
6. Spanish Fork/
Springville
7. Unincorporated

WHY: Analyze enough collisions to get meaningful results

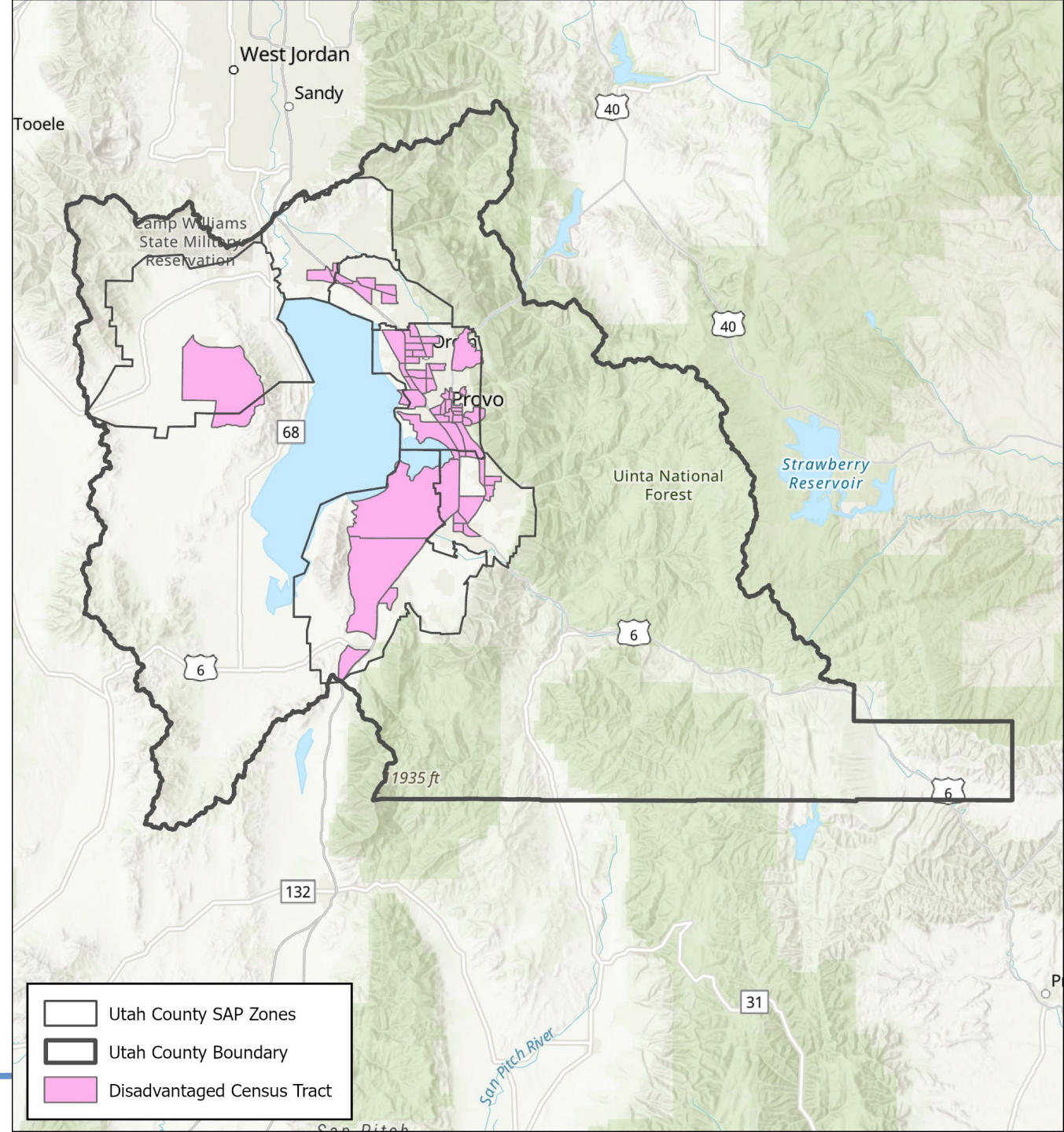
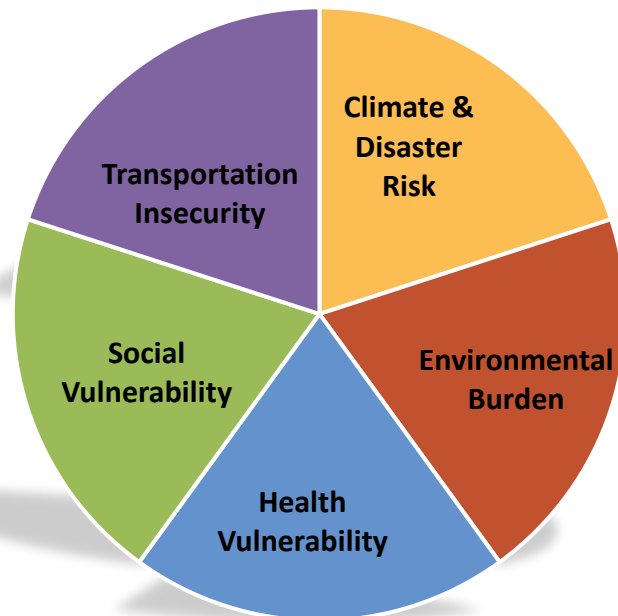
HOW: Grouped jurisdictions with similar characteristics



Demographic Snapshot

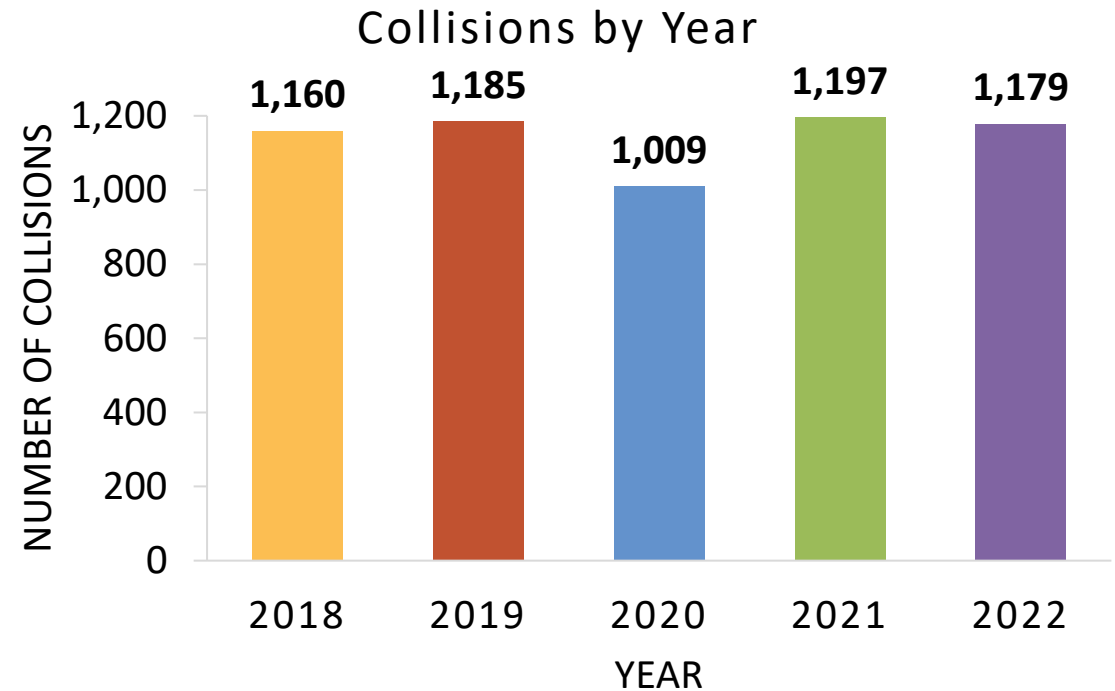
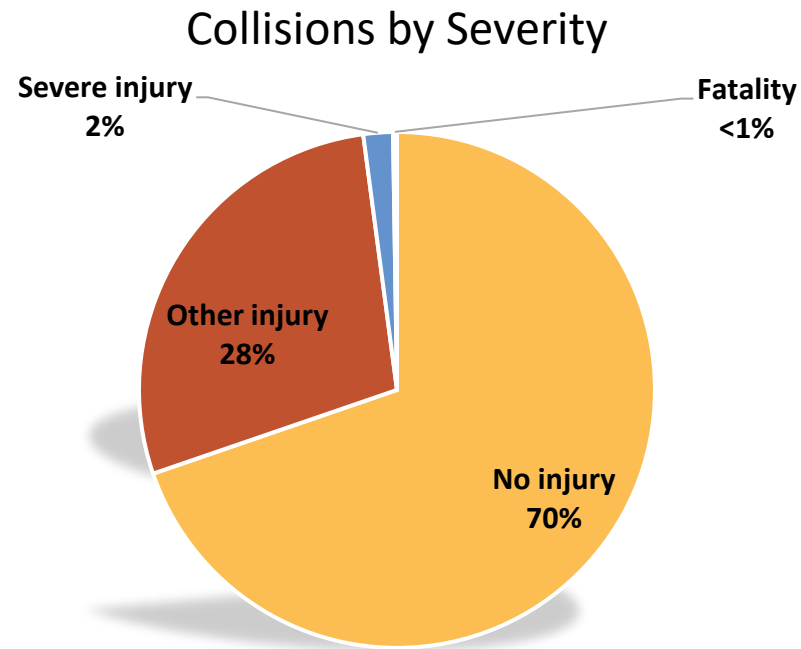
Disadvantaged communities are important considerations for analysis and recommendations

What is a disadvantaged community?



American Fork/ Pleasant Grove/Lindon: Collisions

- 5,730 total collisions from 2018-2022



American Fork/ Pleasant Grove/Lindon: collisions

- 116 collisions involved active transportation users



70 collisions

12 resulted in severe
injury or fatality



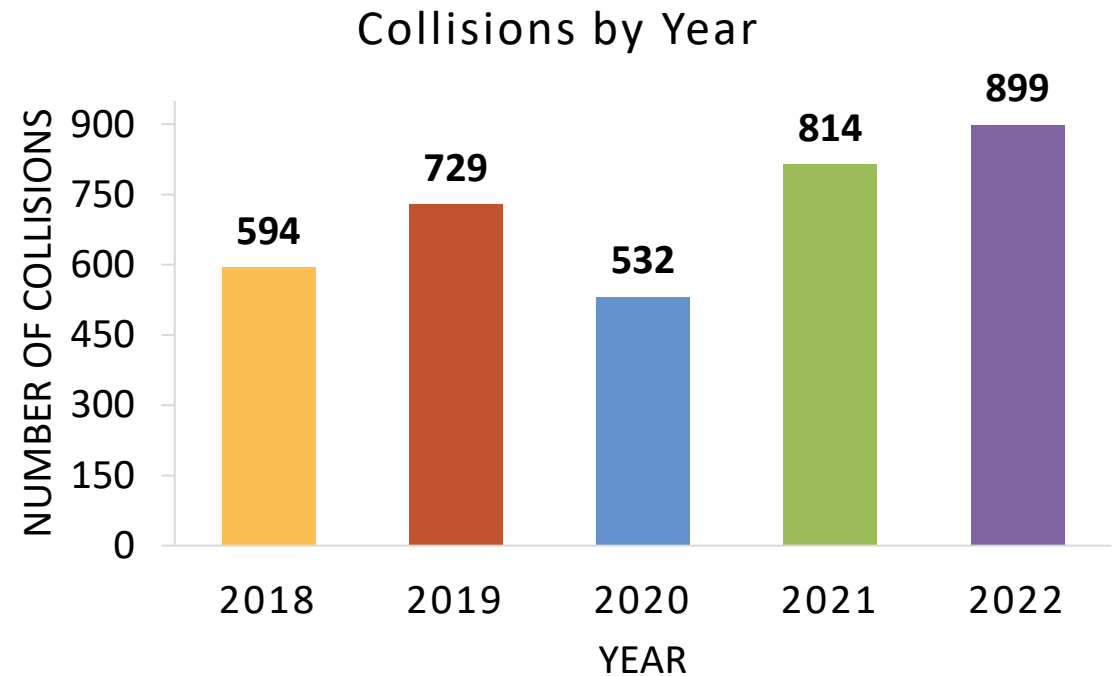
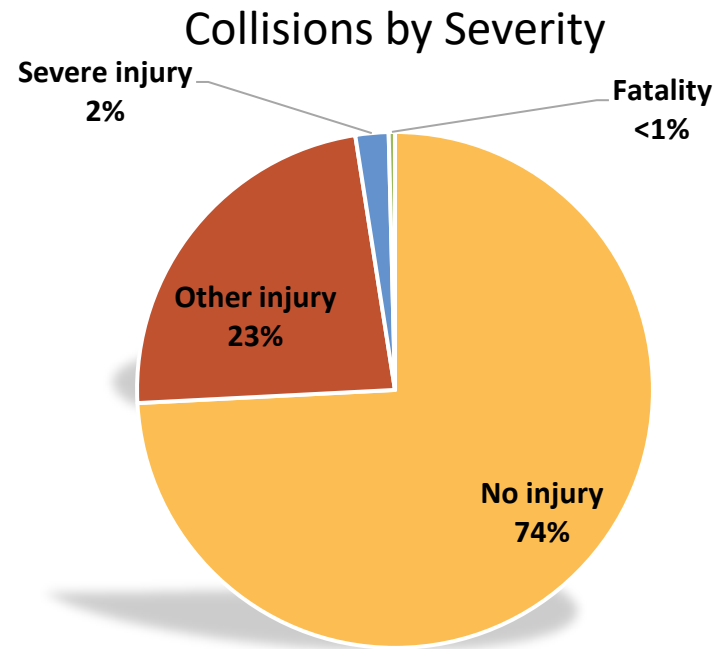
46 collisions

4 resulted in severe
injury or fatality



Eagle Mountain/ Saratoga Springs: Collisions

- 3,568 total collisions from 2018-2022



Eagle Mountain/ Saratoga Springs: Collisions

- 71 collisions involved active transportation users



25 collisions

9 resulted in severe
injury or fatality



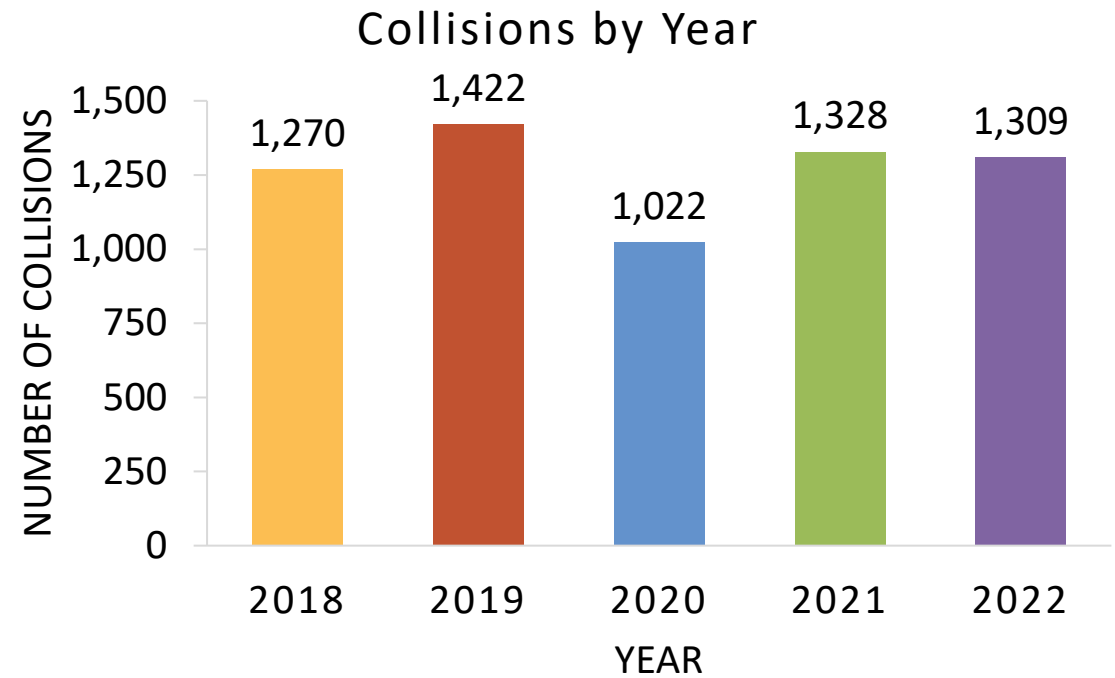
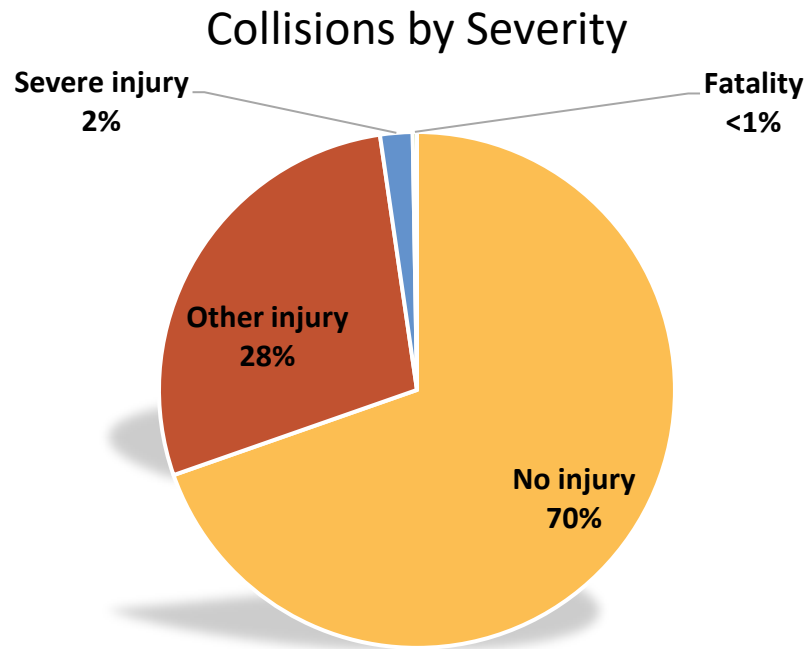
46 collisions

3 resulted in severe
injury or fatality



Lehi/Highland: Collisions

- 6,351 total collisions from 2018-2022



Lehi/Highland: Collisions

- 128 collisions involved active transportation users



70 collisions

19 resulted in severe
injury or fatality



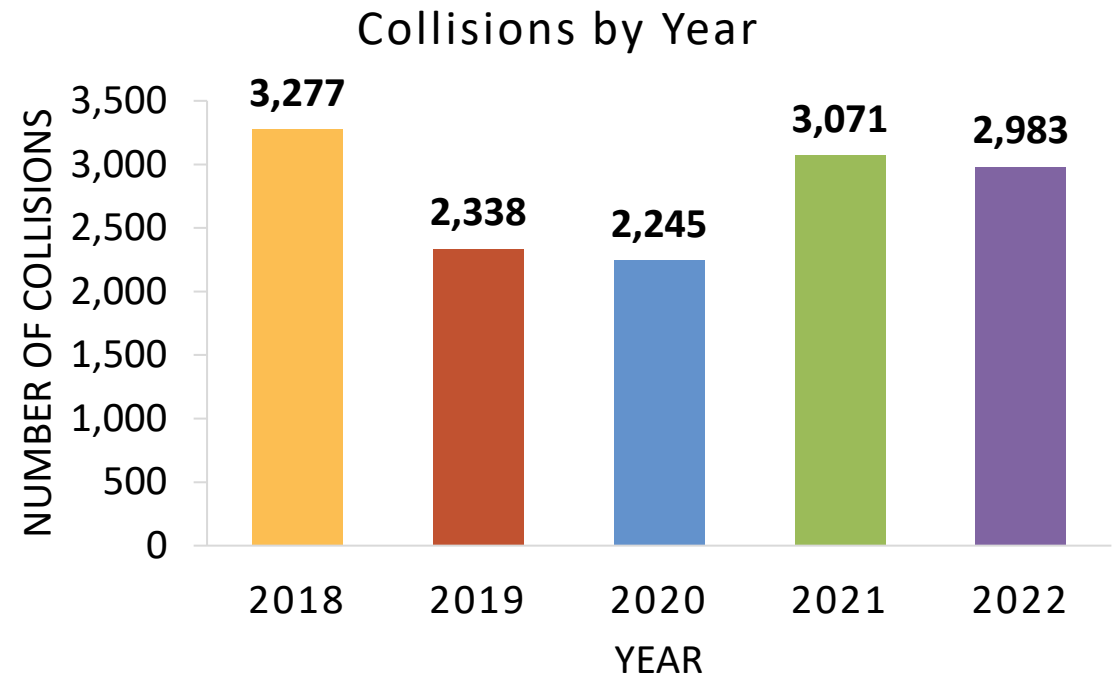
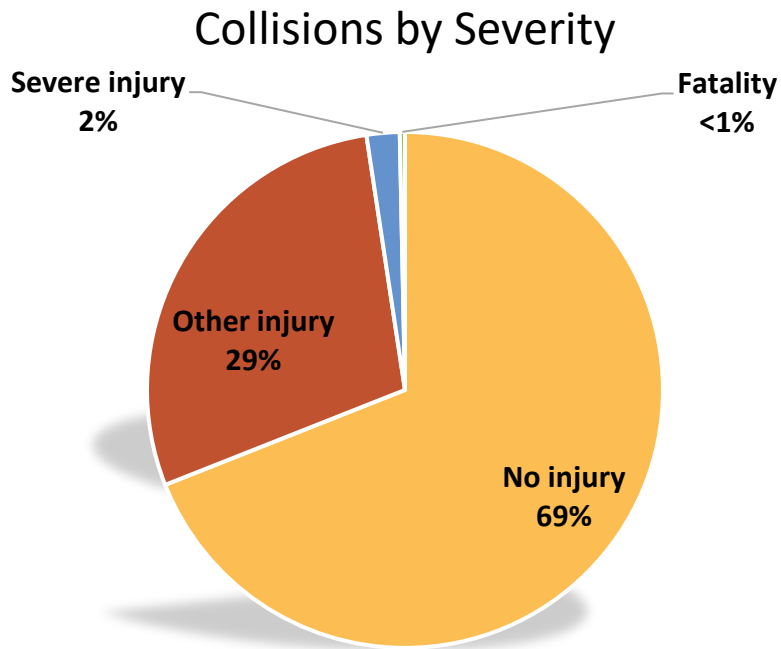
58 collisions

9 resulted in severe
injury or fatality



Orem/Provo: Collisions

- 13,914 total collisions from 2018-2022



Orem/Provo: Collisions

- 573 collisions involved active transportation users



329 collisions

65 resulted in severe
injury or fatality



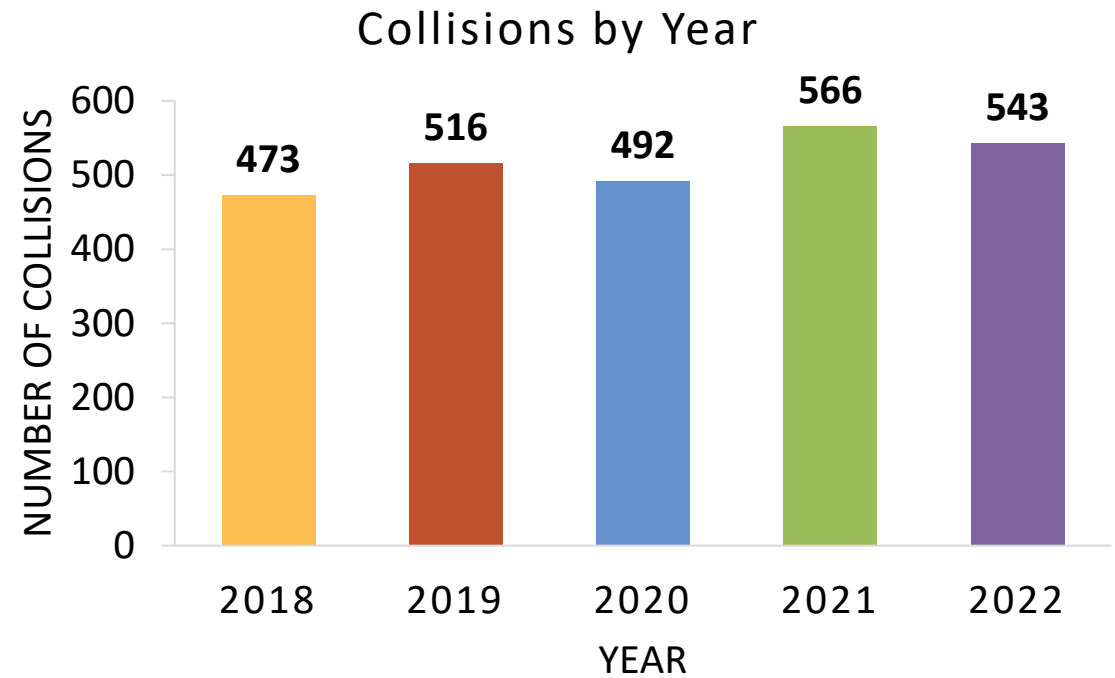
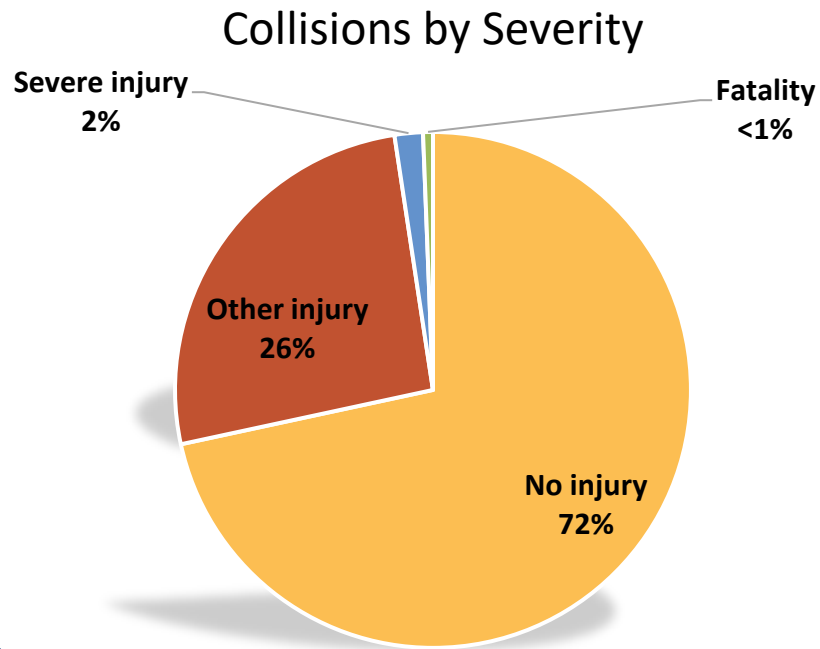
244 collisions

33 resulted in severe
injury or fatality



Payson: Collisions

- 2,590 total collisions from 2018-2022



Payson: Collisions

- 63 collisions involved active transportation users



44 collisions

6 resulted in severe
injury or fatality



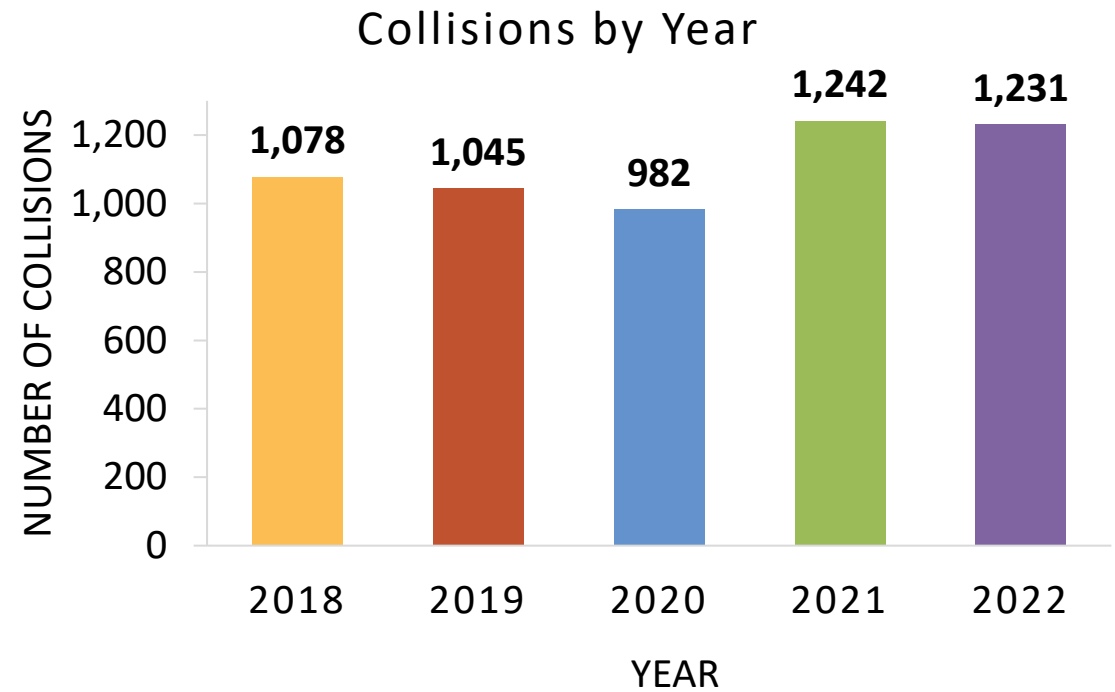
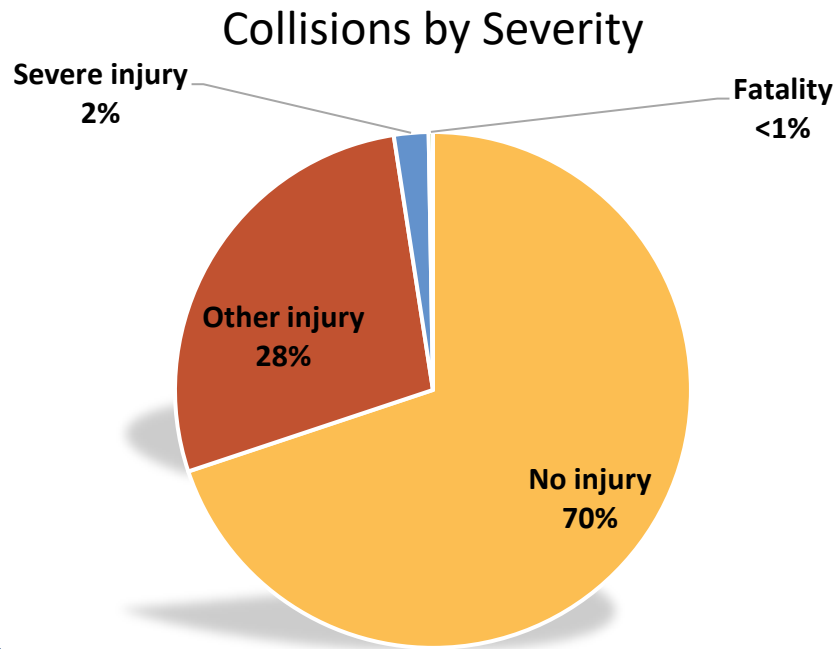
19 collisions

1 resulted in severe
injury or fatality



Spanish Fork/Springville: Collisions

- 5,578 total collisions from 2018-2022



Spanish Fork/Springville: collisions

- 152 collisions involved active transportation users



102 collisions

17 resulted in severe
injury or fatality



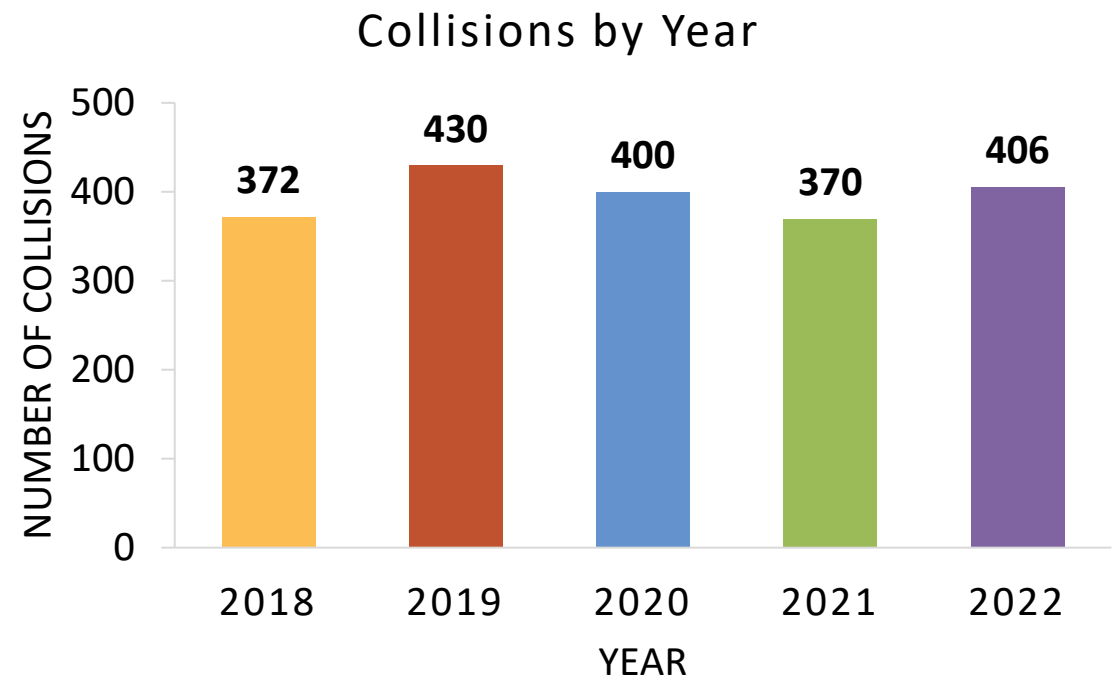
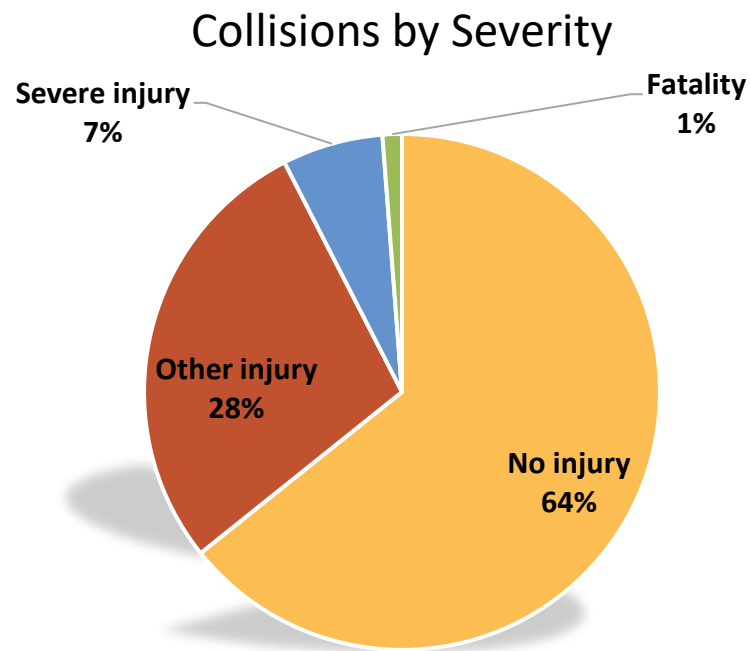
50 collisions

8 resulted in severe
injury or fatality



Unincorporated Utah County: collisions

- 1,978 total collisions from 2018-2022



Unincorporated Utah County: collisions

- 7 collisions involved active transportation users



5 collisions

3 resulted in severe
injury or fatality



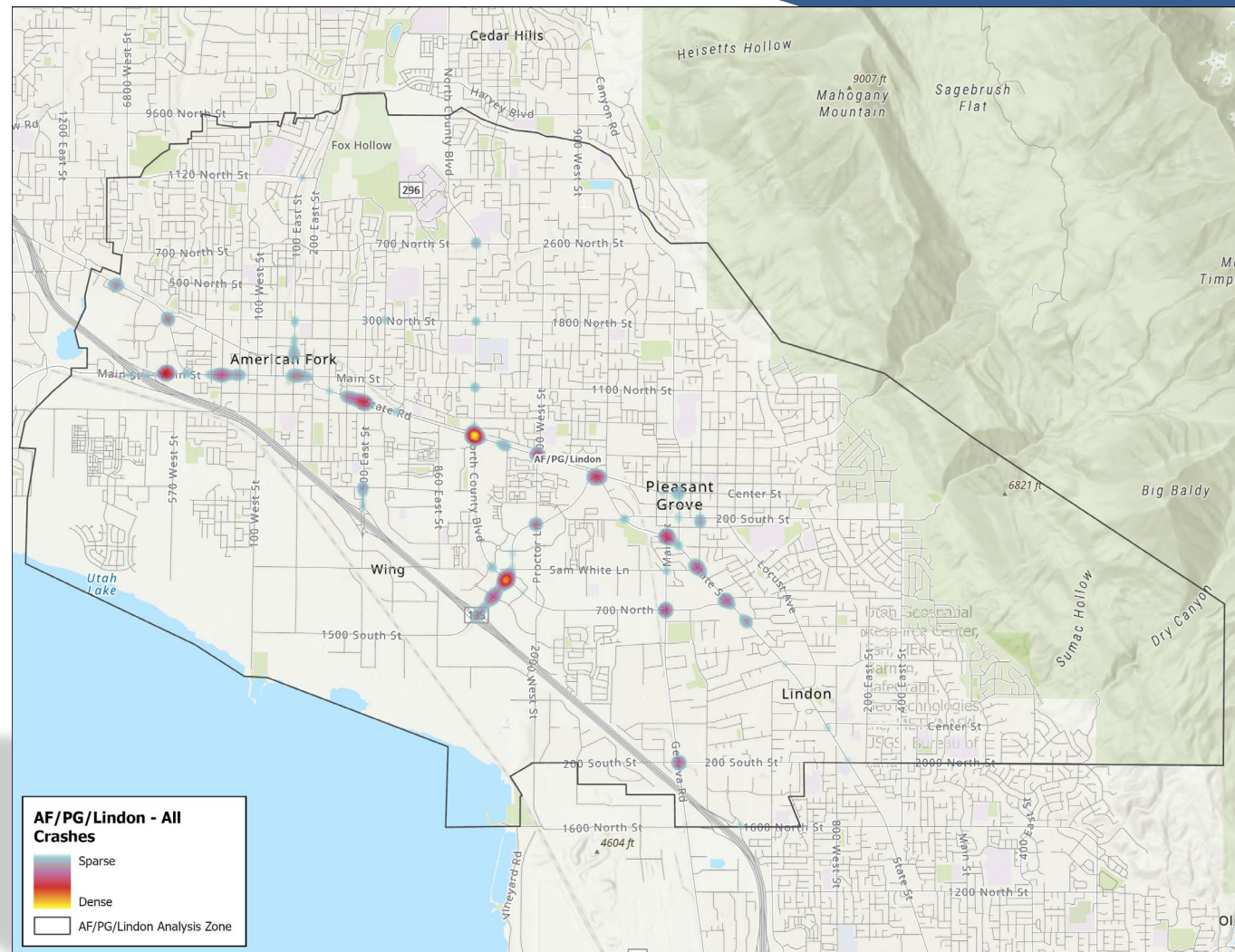
2 collisions

1 resulted in severe
injury or fatality



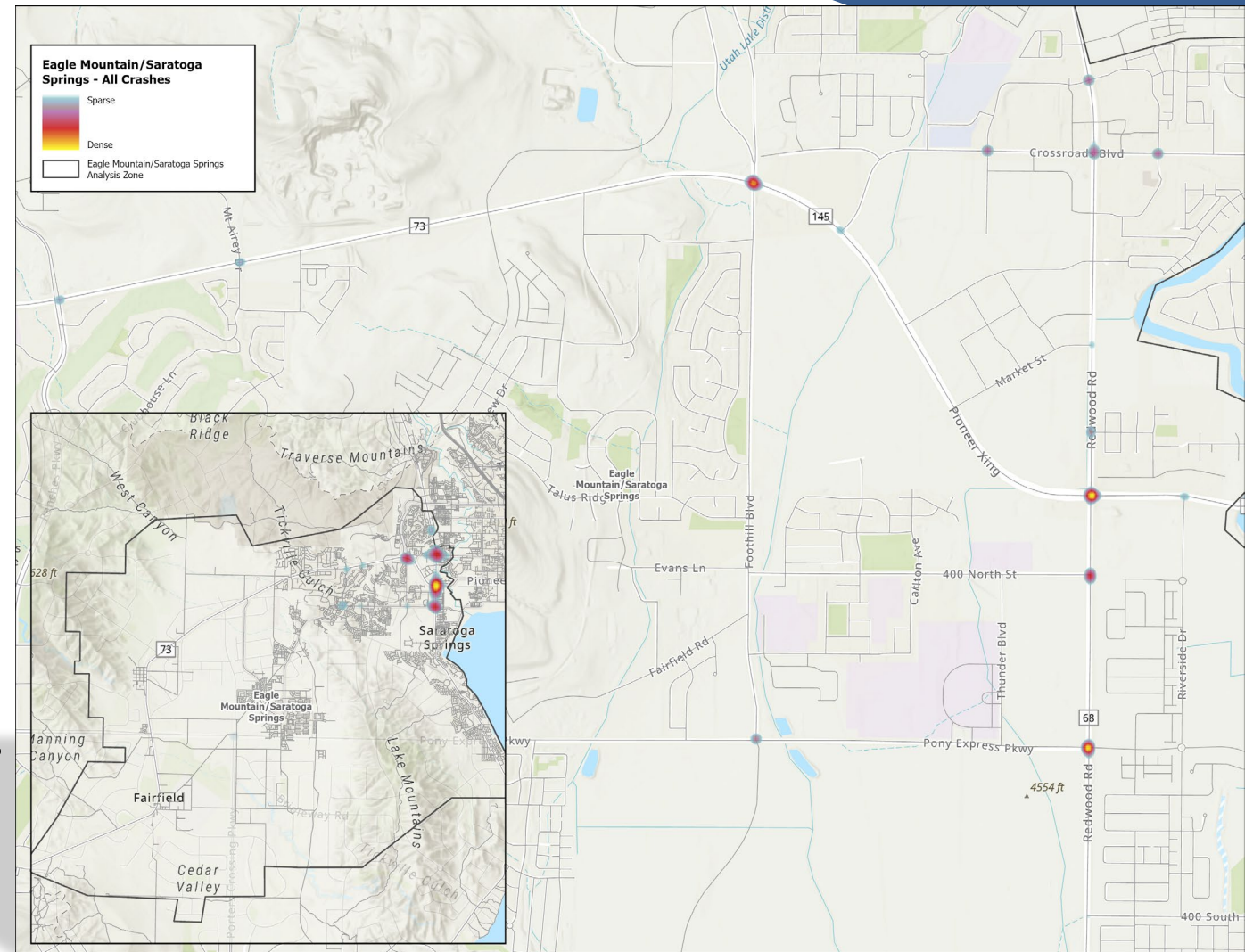
American Fork/ Pleasant Grove/ Lindon: Hot Spot Locations

- **All collisions:**
 - State St.
 - Pleasant Grove Blvd.
- **Severe injury/fatal collisions:**
 - State Street at North County Blvd.
 - **Bike/pedestrian collisions:**
 - 100 East (American Fork)



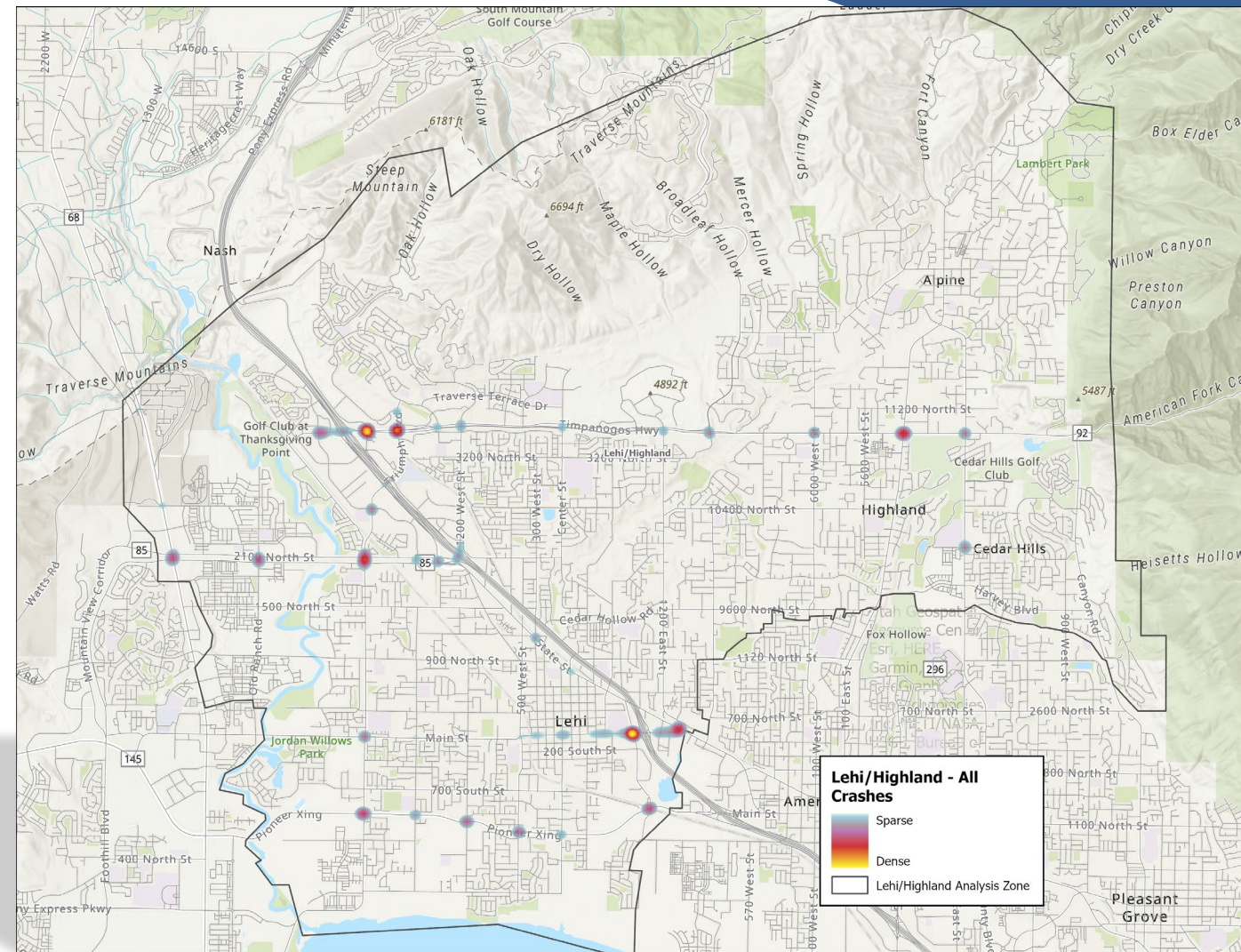
Eagle Mountain/ Saratoga Springs: Hot Spot Locations

- **All collisions:**
 - Redwood Road
- **Severe injury/fatal collisions:**
 - Crossroads Blvd at Redwood Rd.
- **Bike/pedestrian collisions:**
 - Pony Express Pkwy.



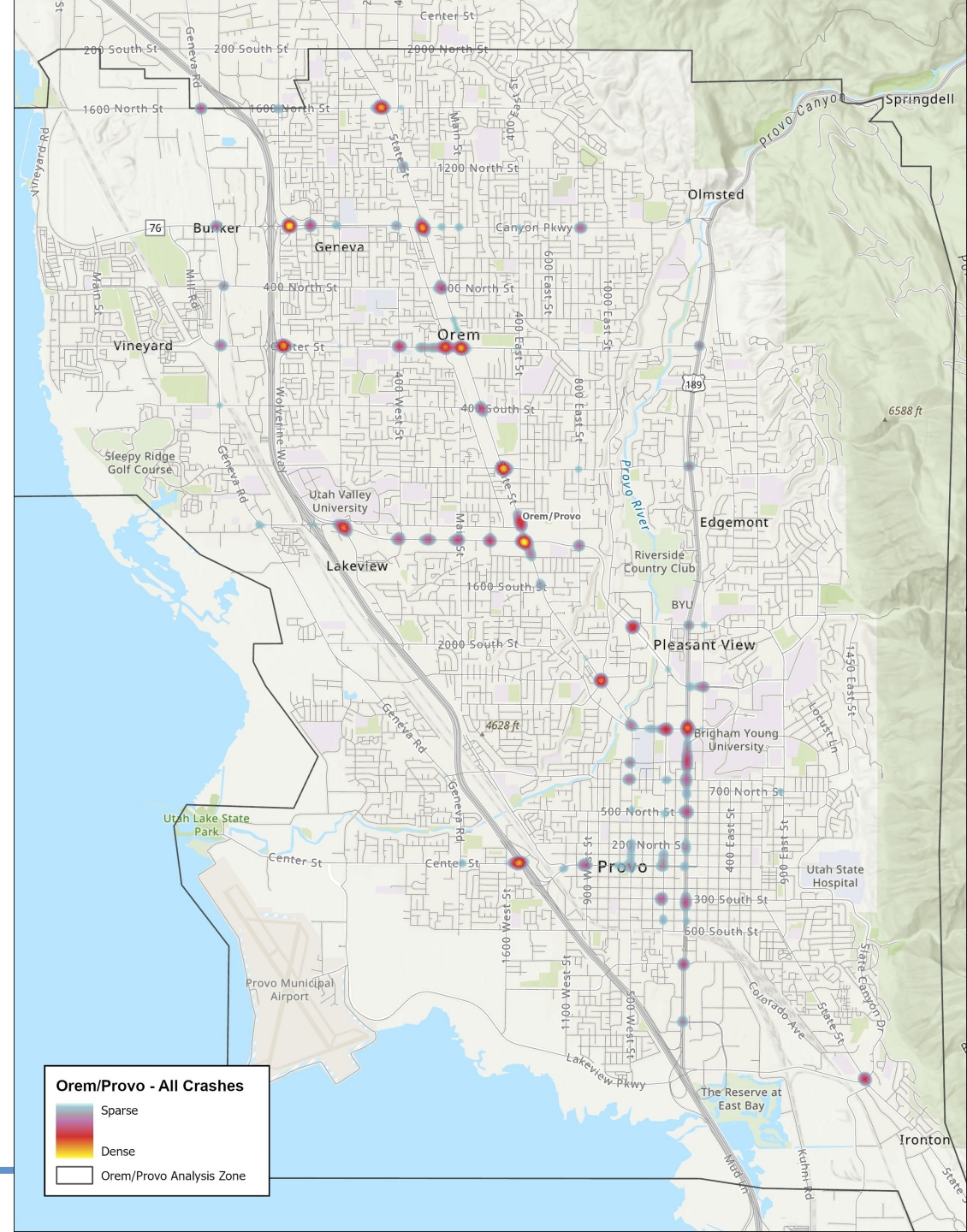
Lehi/Highland: Hot Spot Locations

- **All collisions:**
 - SR-92
 - Main St. (Lehi)
- **Severe injury/fatal collisions:**
 - SR-92 at Highland Blvd. and 6000 West
- **Bike/pedestrian collisions:**
 - Downtown Lehi
 - State St. at Main St. (Lehi)



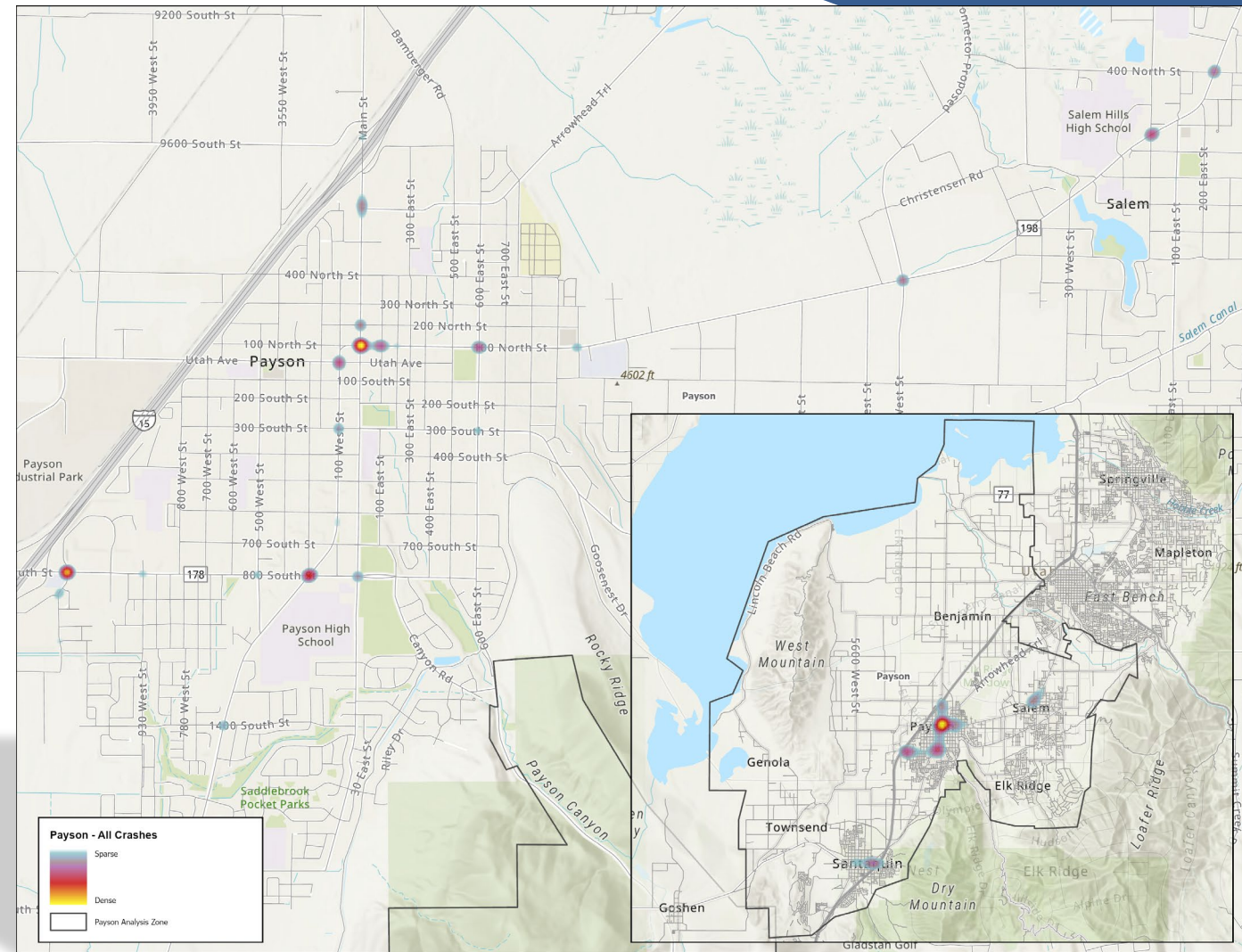
Orem/Provo: Hot Spot Locations

- **All collisions:**
 - University Ave. (US-189)
 - State St.
- **Severe injury/fatal collisions:**
 - State St. at Lakeview Pkwy.
 - State St. at Grandview Ln.
- **Bike/pedestrian collisions:**
 - University Pkwy. at State St.
 - State St. at Grandview Ln.



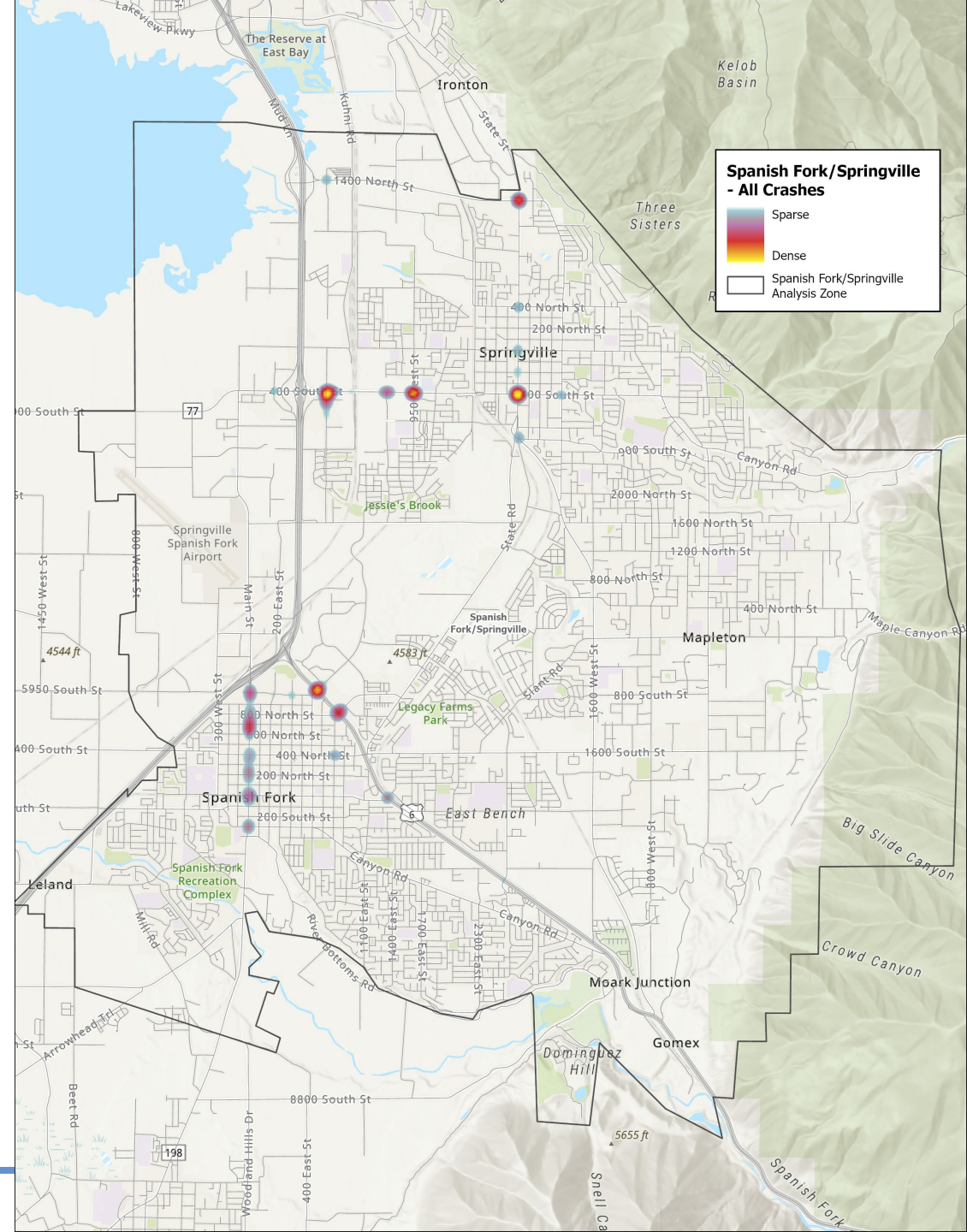
Payson: Hot Spot Locations

- **All collisions:**
 - 100 North St. at Main St.
- **Severe injury/fatal collisions:**
 - 800 South (SR-178) at 1270 West
 - 800 South (SR-178) at Main St.
- **Bike/pedestrian collisions:**
 - 800 South (SR-178) at Main St.



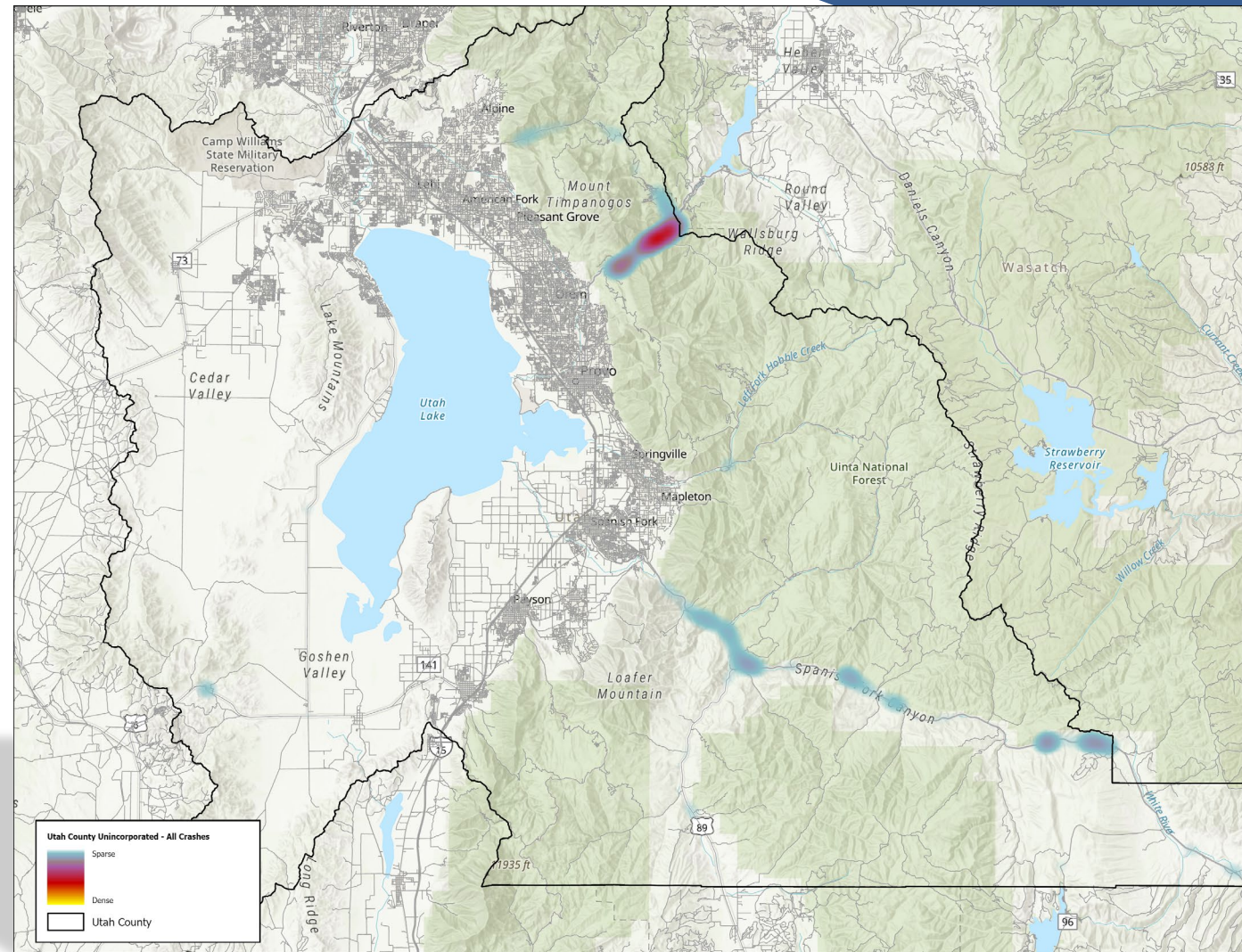
Spanish Fork/ Springville: Hot Spot Locations

- **All collisions:**
 - Main St. (Spanish Fork)
 - 400 South (Springville)
- **Severe injury/fatal collisions:**
 - US-6 at Expressway Lane
 - US-6 at Powerhouse Road
- **Bike/pedestrian collisions:**
 - 400 South at 400 East (Springville)
 - Center Street at Main Street



Unincorporated Utah County: Hot Spot Locations

- **All collisions:**
 - US-189 (Provo Canyon)
- **Severe injury/fatal collisions:**
 - US-189 (Provo Canyon)
- **Bike/pedestrian collisions:**
 - US-6 (Spanish Fork Canyon)



American Fork/Pleasant Grove/Lindon: Overrepresented Serious Injury/Fatal Crash Characteristics



10%
involved
aggressive driving

65+

22%
involved
older drivers



74%
involved
intersections



3%
Involved drowsy
driving

These rates are higher than county AND state rates.



Eagle Mountain/Saratoga Springs: Overrepresented Serious Injury/Fatal Crash Characteristics



7%
involved
aggressive driving



33%
involved
teen drivers



58%
involved
intersections



14%
Involved heavy
vehicles

These rates are higher than county AND state rates.



Lehi/Highland:

Overrepresented Serious Injury/Fatal Crash Characteristics



10%
involved
distracted driving



13%
involved
pedestrians



30%
involved teen
drivers



6%
involved
bicyclists



6%
involved
intersections



3%
involved
drowsy drivers

These rates are higher than county AND state rates.



Orem/Provo:

Overrepresented Serious Injury/Fatal Crash Characteristics



7%
involved
aggressive driving



23%
involved
motorcycles



20%
involved
pedestrians



10%
involved
Distracted driving



10%
involved
bicyclists



60%
involved
intersections

These rates are higher than county AND state rates.



Payson:

Overrepresented Serious Injury/Fatal Crash Characteristics



10%
involved
aggressive driving



23%
involved
motorcycles

16-19

31%
involved teen
drivers

65+

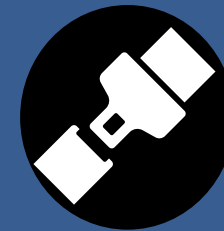
18%
involved older
drivers



13%
involved
distracted driving



24%
involved
speeding



16%
involved lack of
safety restraints

These rates are higher than county AND state rates.



Spanish Fork/Springville: Overrepresented Serious Injury/Fatal Crash Characteristics



7%
involved
aggressive driving



24%
involved
motorcycles



59%
involved
intersections



10%
involved
Distracted driving



6%
involved
bicyclists

16-19

33%
involved
teen drivers

These rates are higher than county AND state rates.



Unincorporated Utah County: Overrepresented Serious Injury/Fatal Crash Characteristics



28%
involved
motorcycles



35%
involved speeding



12%
involved heavy
vehicles



3%
involved work
zones



64%
Involved roadway
departure



16%
involved lack of
safety restraints



4%
involved drowsy
driving

These rates are higher than county AND state rates.

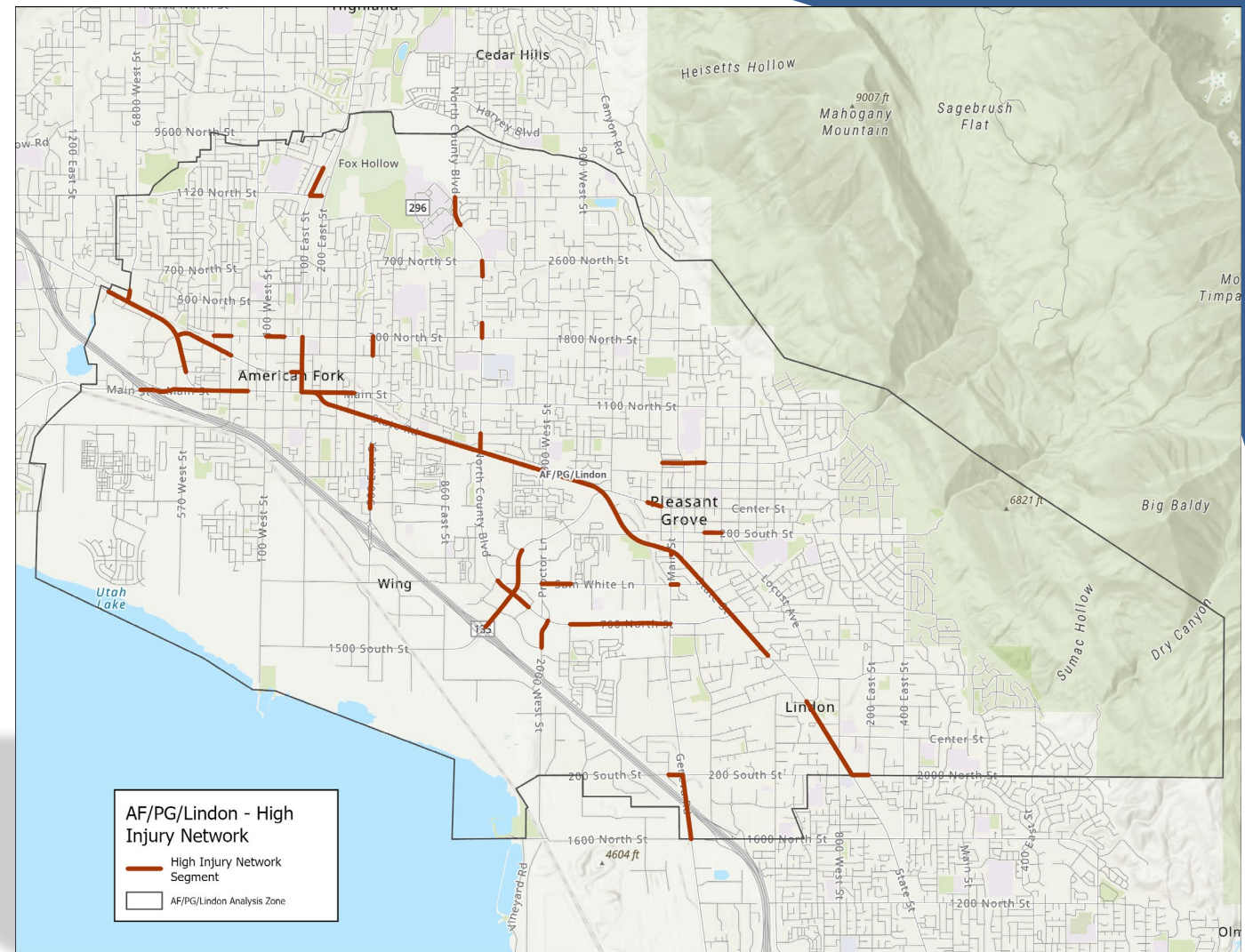


American Fork/ Pleasant Grove/ Lindon: High Injury Network

10% of roads have 98% of crashes resulting in severe injury or fatality

Top locations:

- State St.
- Geneva Rd.

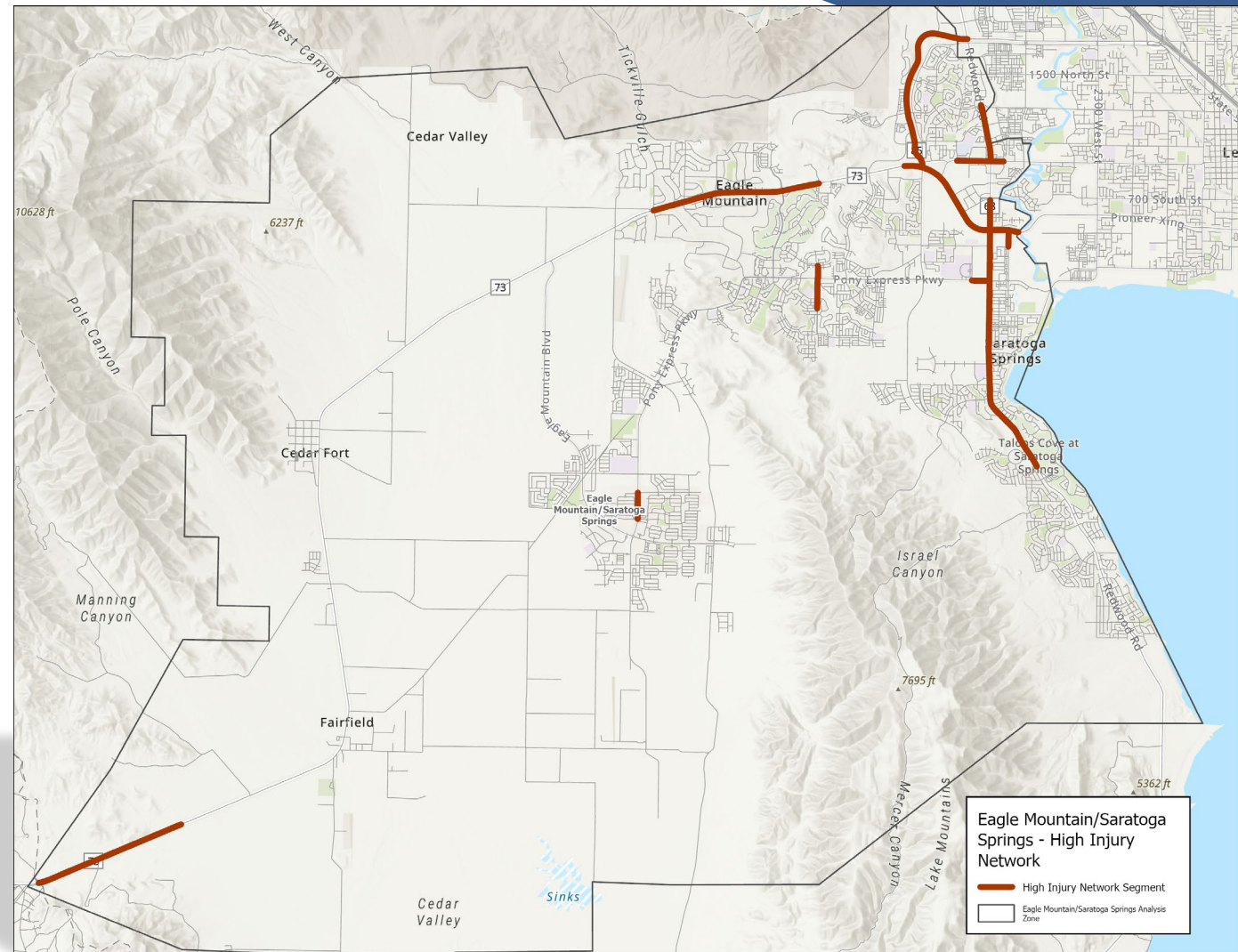


Eagle Mountain/ Saratoga Springs: High Injury Network

10% of roads have 64% of crashes resulting in severe injury or fatality

Top locations:

- Redwood Rd.
(north of Saratoga Springs)
- SR-73 (Eagle Mountain)

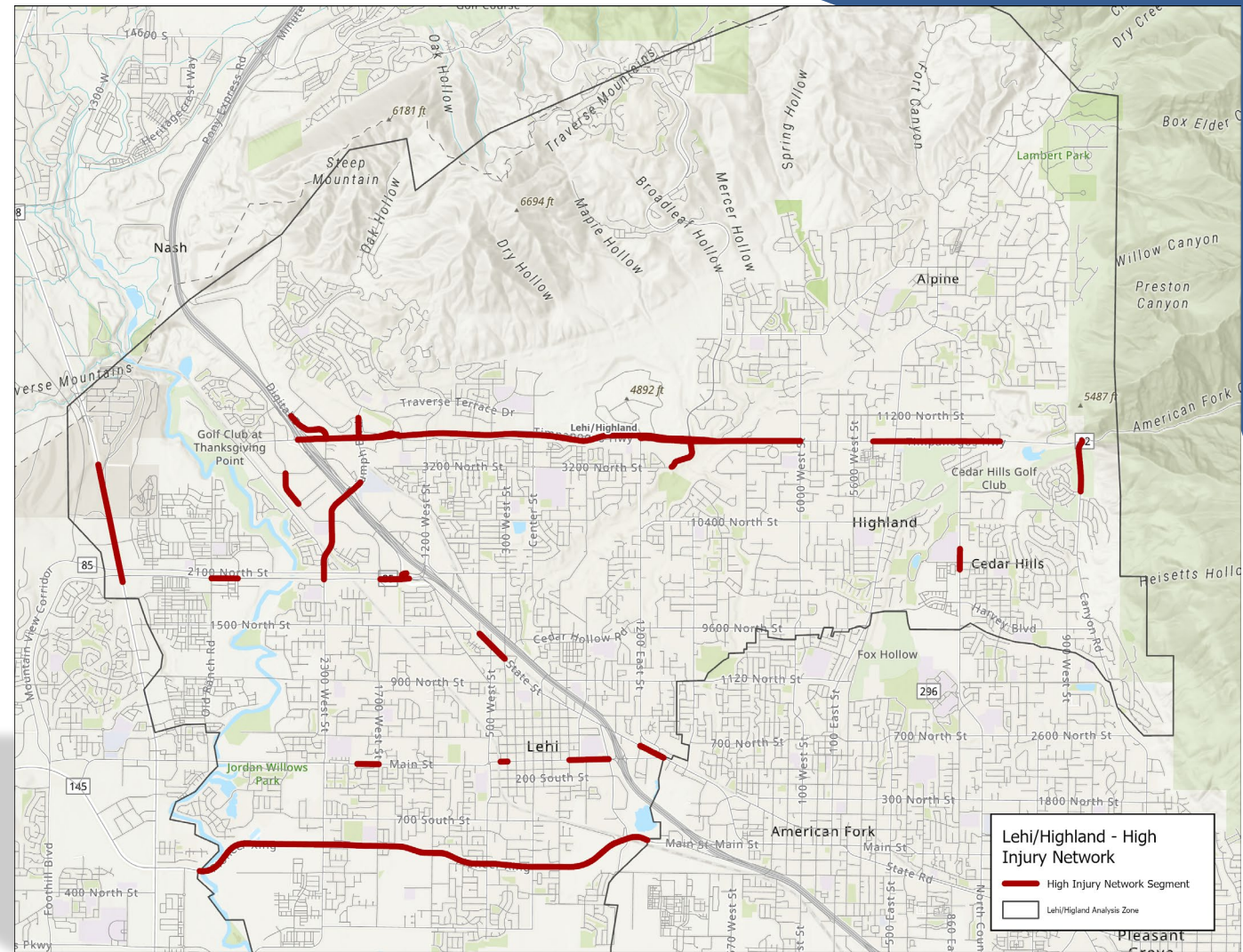


Lehi/Highland: High Injury Network

10% of roads have 53% of crashes resulting in severe injury or fatality

Top locations:

- Pioneer Crossing
- SR-92

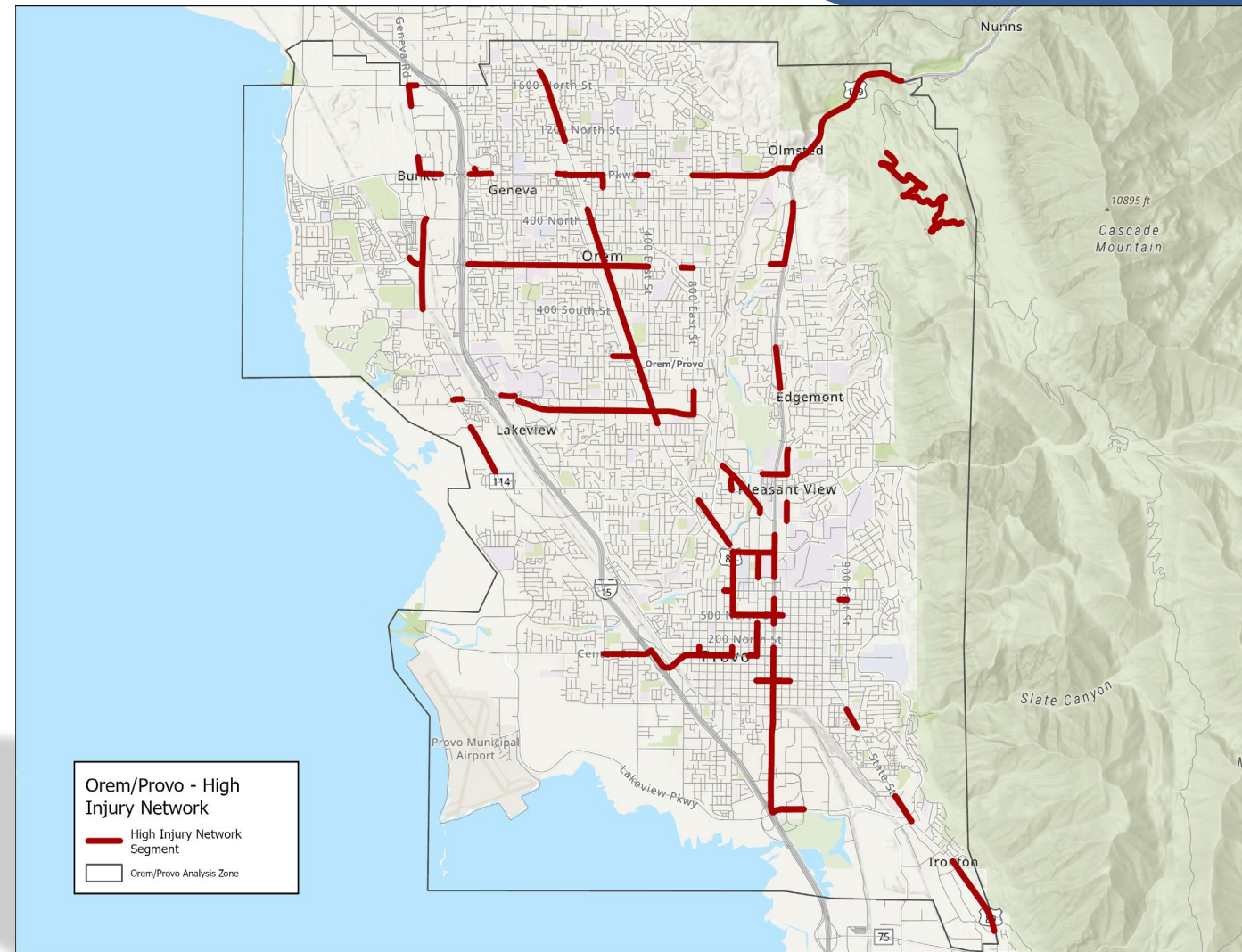


Orem/Provo: High Injury Network

10% of roads have 67% of crashes
resulting in severe injury or fatality

Top locations:

- State St. (Orem)
- State St. (Provo)
- State St. (south Provo)

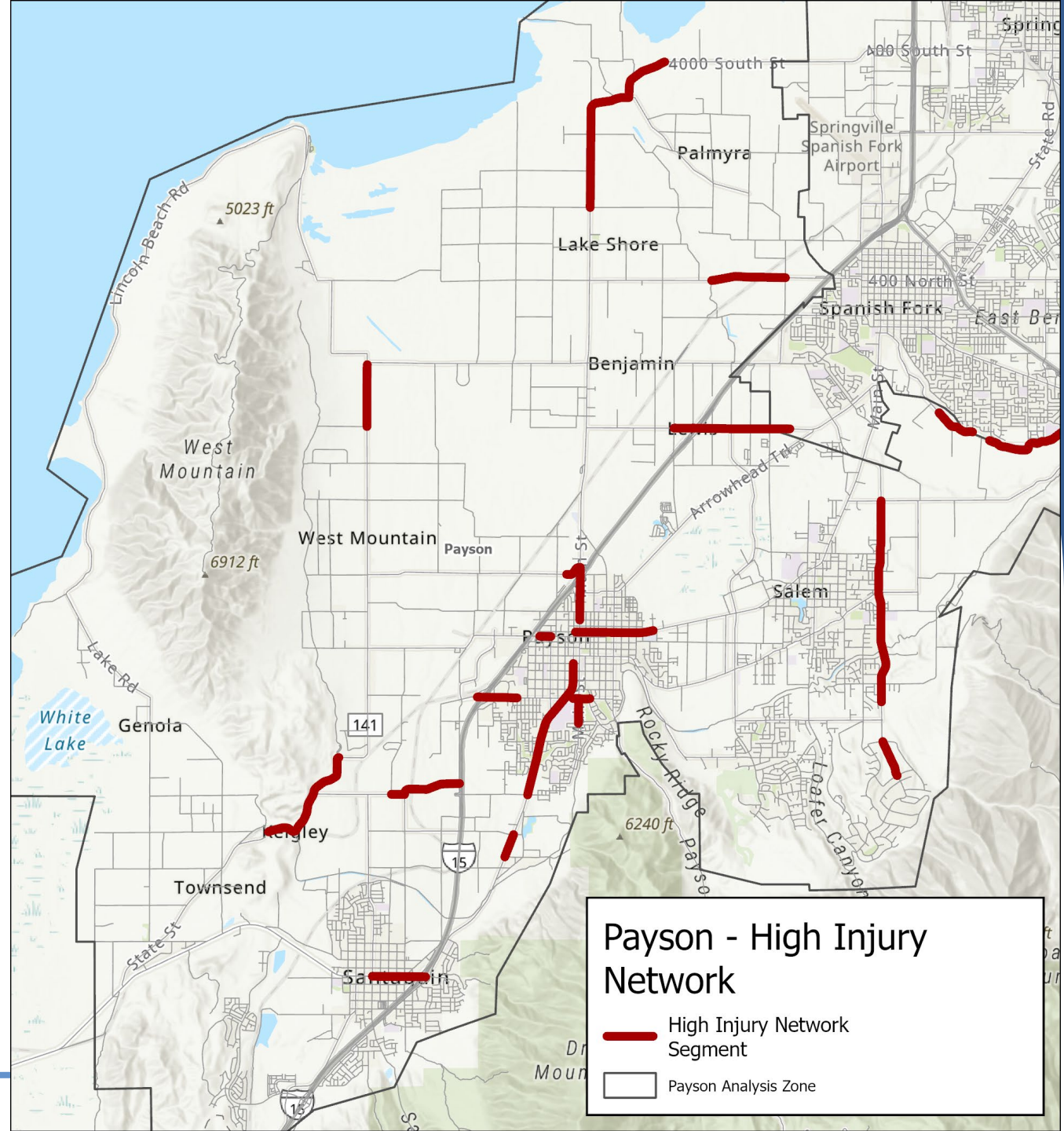


Payson: High Injury Network

8% of roads have 100% of crashes resulting in severe injury or fatality

Top locations:

- Main St.
- 100 West
- West Mountain Rd.
(near Genola)

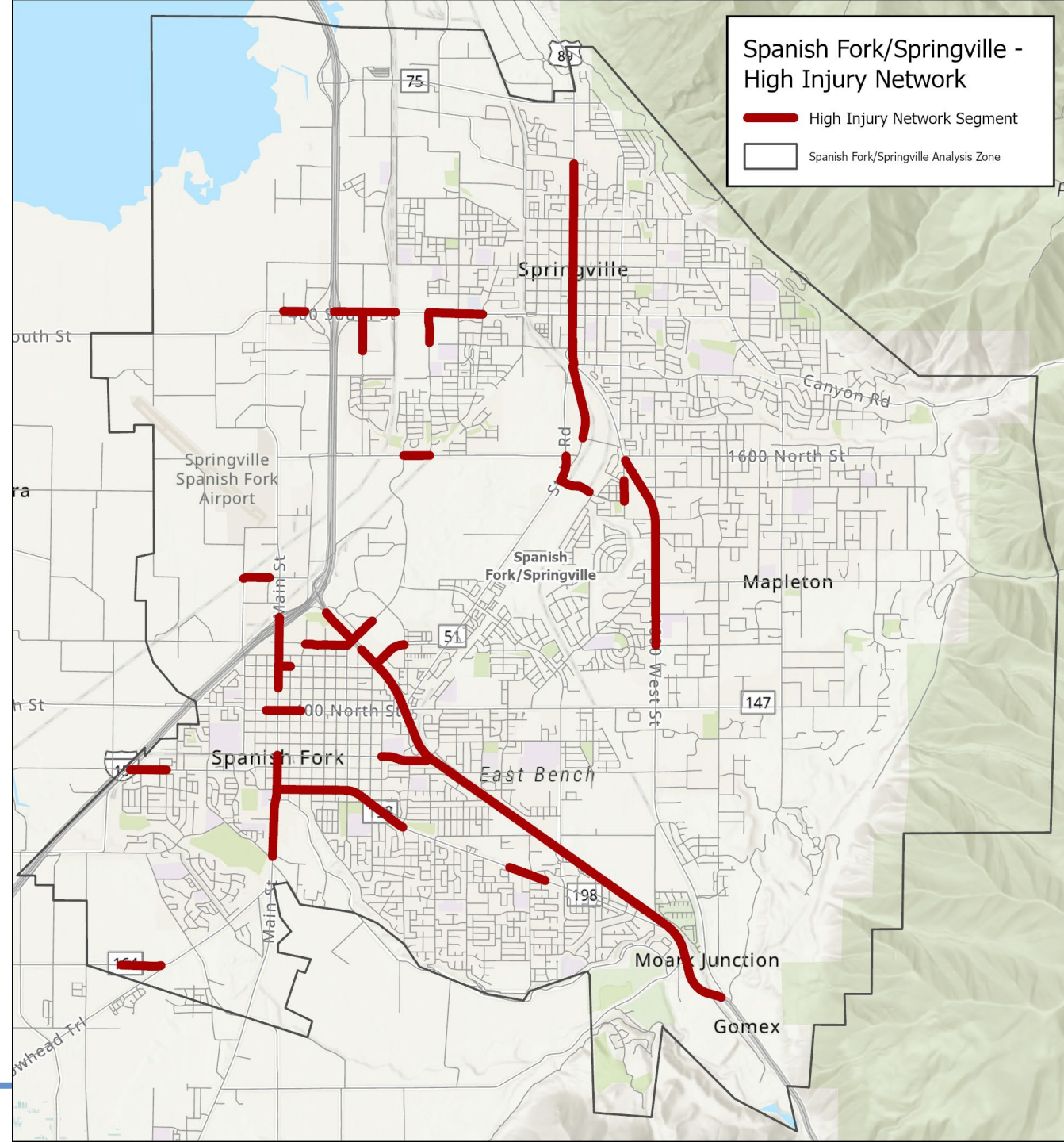


Spanish Fork/ Springville: High Injury Network

10% of roads have 67% of crashes resulting in severe injury or fatality

Top locations:

- US-6 (Spanish Fork)
- 400 South (Springville)

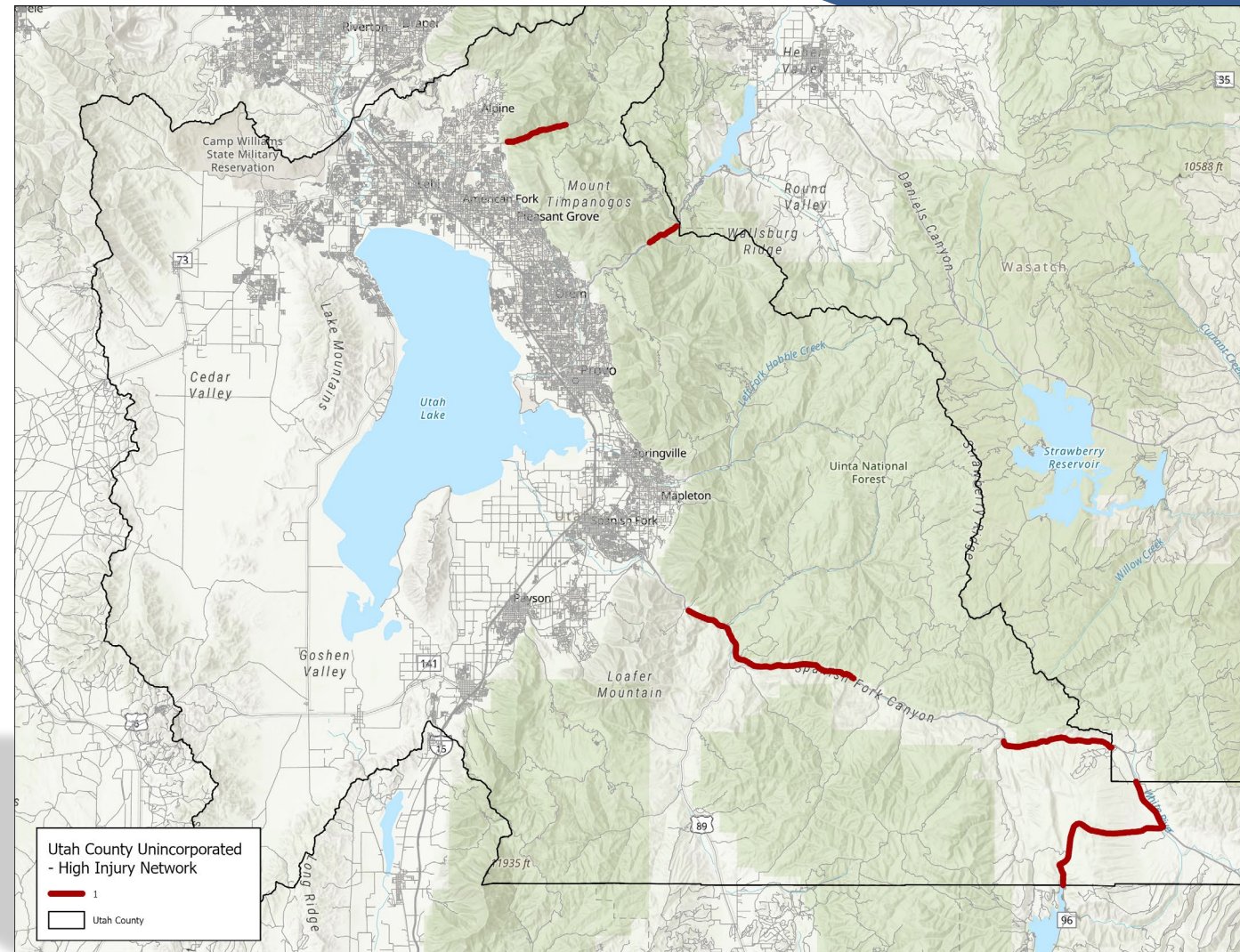


Unincorporated Utah County: High Injury Network

10% of roads have 67% of crashes resulting in severe injury or fatality

Top locations:

- US-6 (Spanish Fork Canyon)
- US-189 (Provo Canyon)
 - Alpine Loop
(American Fork Canyon)



Next Steps

- Identify safety countermeasures
- Generate project lists
 - Near, mid, and long term
- Identify candidates for SS4A Implementation Grants
- Support projects for other funding sources
- Develop safety planning support tools



Schedule







Public Involvement

- Goal to inform community members and gather comments about roadway safety
- Recently finished pedestrian intercept surveys in American Fork and Provo
- Will attend community events and hold another public meeting in spring 2024



Take the Survey

- Tell us about your experiences and share information about roadway safety in your community
- Survey open through December 20th
- Survey available at www.mountainlandsafestreeets.org

MOUNTAINLAND SAFE STREETS    

Study Overview

To improve safety for all roadway users (drivers, pedestrians, cyclists, people who use scooters, mobility devices, etc.), the **Mountainland Association of Governments (MAG)**, which develops transportation policies and guidance for Summit, Utah, and Wasatch counties, is developing a Safety Action Plan that will have a lasting change on safety culture in these communities.

Ultimately, the Plan will result in a series of **transportation improvement transportation projects** that MAG, and/or cities within its jurisdiction, can submit to the United States Department of Transportation to gain funding for implementation.

What is your zipcode?*

What types of transportation do you use when you travel?
Choose all that apply

Car

Public Transit

Bike



Connect With Us



Email: safestreets@mountainland.org



Call or text: 385-855-3292



Website: www.mountainlandsafestreets.org



Questions?

