

MOUNTAINLAND SAFE STREETS



Wasatch County Virtual Open House

November 29, 2023

Welcome!

Mountainland Safe Street for All Virtual Open House – Wasatch County

The meeting will begin shortly after 6 p.m. to allow participants time to join the Zoom webinar.

To submit questions, click the Q&A button on your screen. Our team will be monitoring the questions and will answer as many as possible throughout the presentation.

Please note, this event is being recorded and will be available for viewing at www.mountainlandsafestreets.org.



Participant Instructions

1. TO SUBMIT A QUESTION

Click on the Q&A button at the bottom of the screen



Type question in the Q&A Window

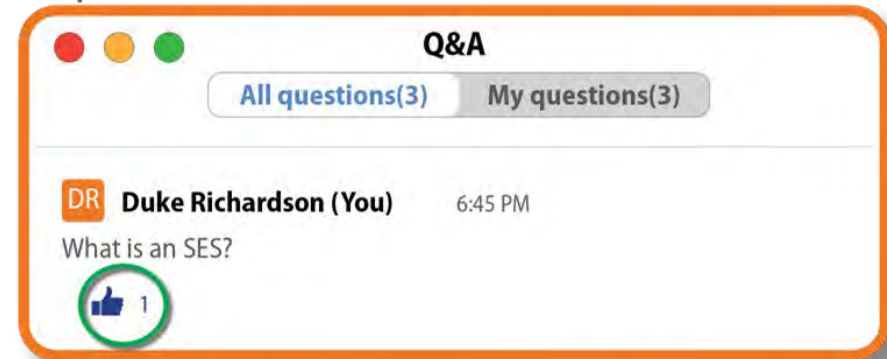
Type your question here...

Send anonymously

Cancel Send

2. TO LIKE OR UPVOTE A QUESTION

Click on the "thumbs-up- button" underneath questions



This helps us to know how many people have the same question



Tonight's Presenters



ROBERT ALLEN
Mountainland Association of Governments
RPO Director



CHARLES ALLEN
Parametrix
Project Manager



JEN SHRIBER
Parametrix
Planner III



STACEE ADAMS
Avenue Consultants
Public Engagement Manager



Mountainland Association of Governments

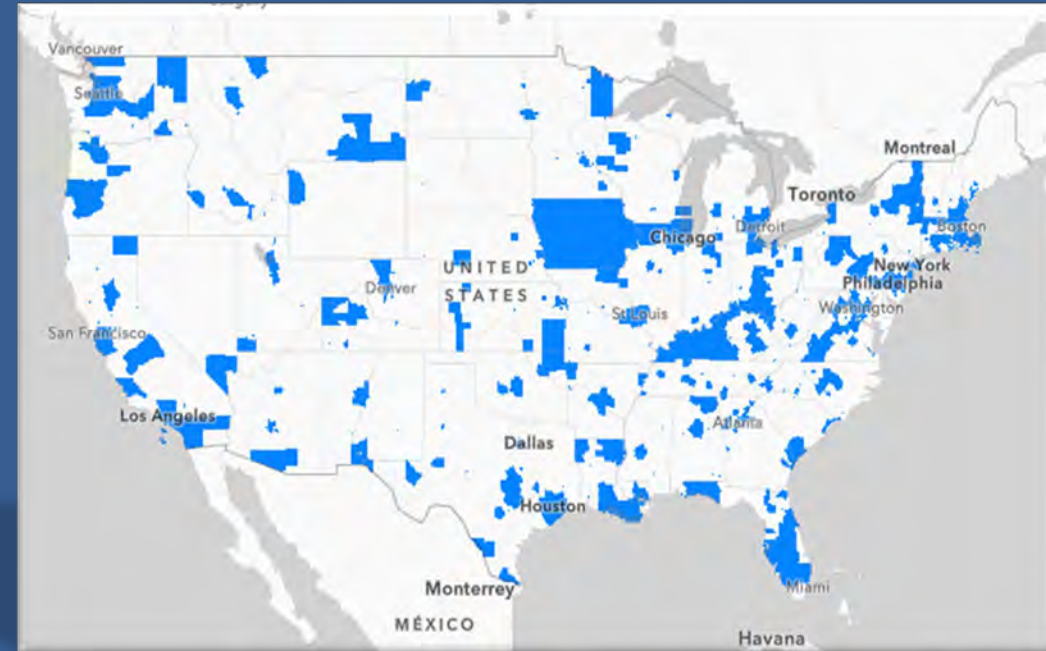
- Regional Planning Organization
 - Transportation Planning
 - Economic Development
- Wasatch Back Rural Planning Organization
 - Each jurisdiction within Summit and Wasatch County
 - Plan and coordinate regional transportation projects within the region



Safe Streets for All (SS4A) Grant Program

- Created by the Bipartisan Infrastructure Law
- Allocated \$1 Billion per year for five years
- Two Grant Types
 - Planning & Demonstration Grants
 - Implementation Grants

Mountainland Association of Governments
(MAG) awarded a 2022 Planning Grant to
complete a Safety Action Plan



What is a Safety Action Plan?

A Safety Action Plan (SAP) is the basic building block to improve roadway safety by reducing and eliminating serious injury and fatal crashes. The SAP generally consists of these 8 steps:

1. Leadership Commitment

- *Adopt a goal to commit to reduce or eliminate fatalities and serious injuries*

2. Planning Structure

- *Form a committee to oversee plan development, implementation*

3. Safety Analysis

- *Existing conditions, historical crash trends, high risk locations*

4. Engagement & Collaboration

- *Public and relevant stakeholders, for community representation and feedback*



What is a Safety Action Plan?

5. Equity

- *Developed through a plan using inclusive and representative processes*

6. Policy & Process Change

- *Assess the current policies and plans to identify opportunities to improve how processes prioritize transportation safety*

7. Strategy & Project Selection

- *Phased set of projects and strategies*

8. Progress & Transparency Methods

- *Measure progress over time after an Action Plan is adopted*



MAG Extra Efforts

1. Identify packages of safety projects for final 3 years (2024, 2025, 2026) of SS4A Implementation Grants Prepare engineering concepts for projects
 - Up to \$600 M available each year
2. Elevate safety in the MAG planning and project prioritization processes
 - Countermeasure toolkits
 - Safe System policies



Countermeasure Sample Project Types



Speed Limit Changes



Crosswalk Visibility



Median Refuge Islands



Road Diets



Curve Delineation



Access Management



Signal Timing Changes



Rumble Strips



Safe System Approach



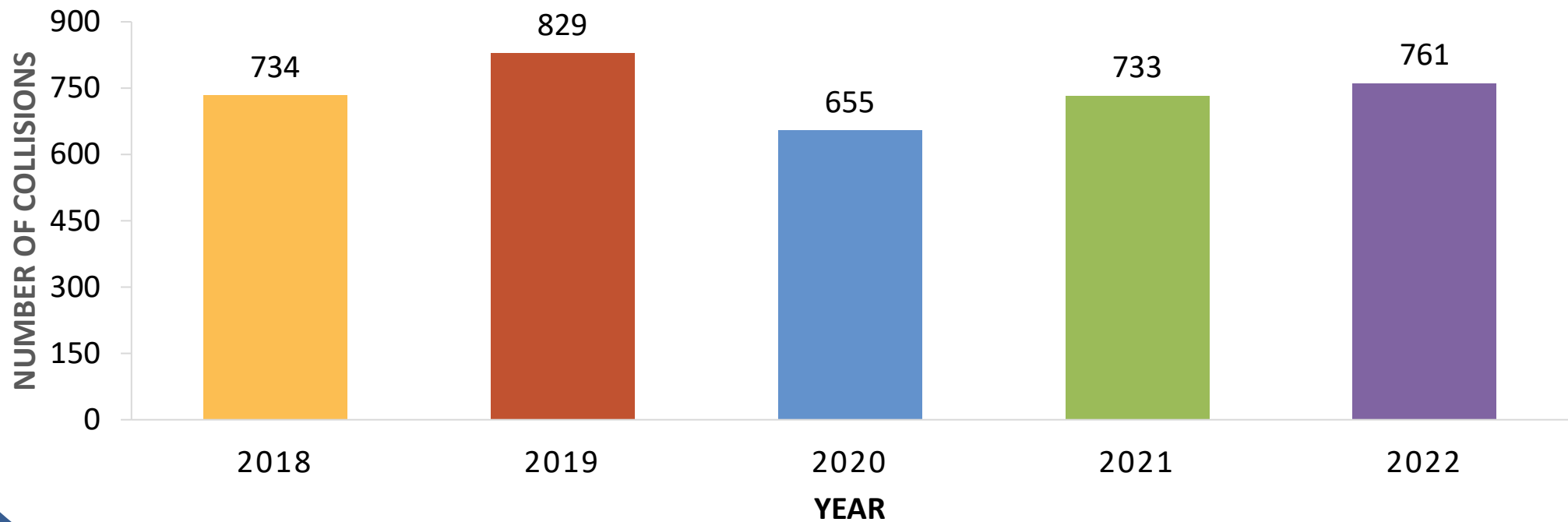
The Safe System Approach, FHWA 2023



Wasatch County: Collisions

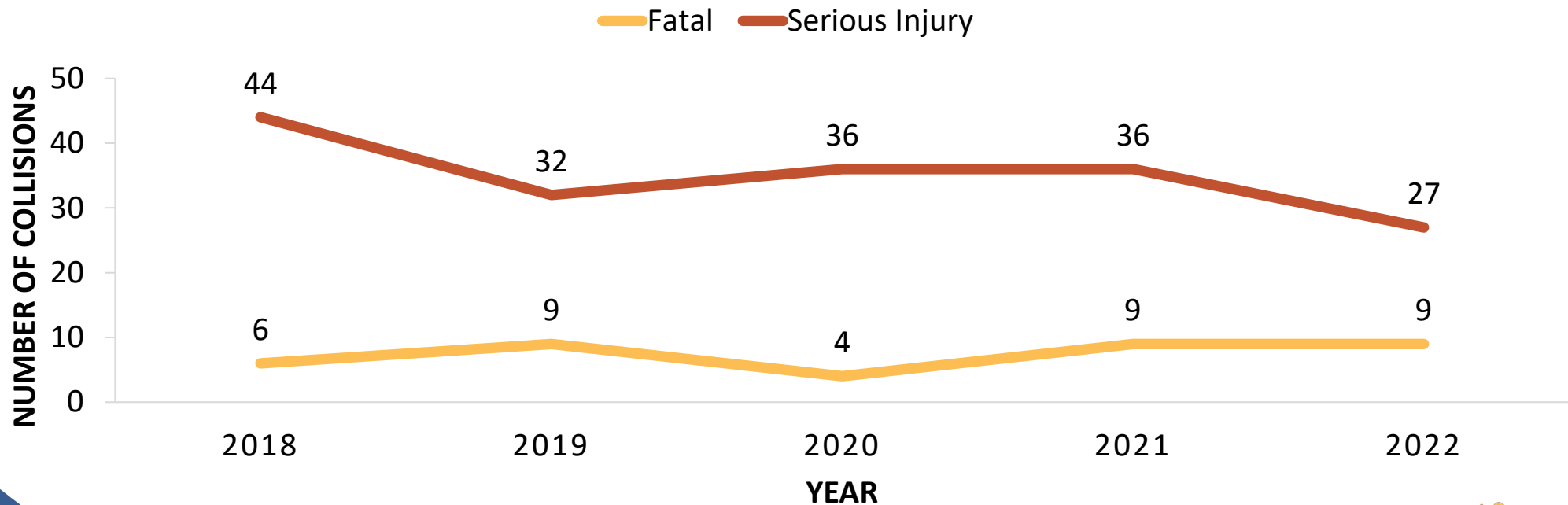
- 3,712 collisions from 2018-2022*

*Not including interstate collisions



Wasatch County: Collisions

- 1 % of collisions were fatal
- 5 % resulted in serious injury



Wasatch County: Collisions

- 44 collisions involved active transportation users



20 collisions

7 resulted in severe
injury or fatality



24 collisions

2 resulted in severe
injury or fatality



Wasatch County: collisions



1%
involved active
transportation users



29%
involved a vehicle
leaving the roadway



24%
involved speeding



31%
occurred at night



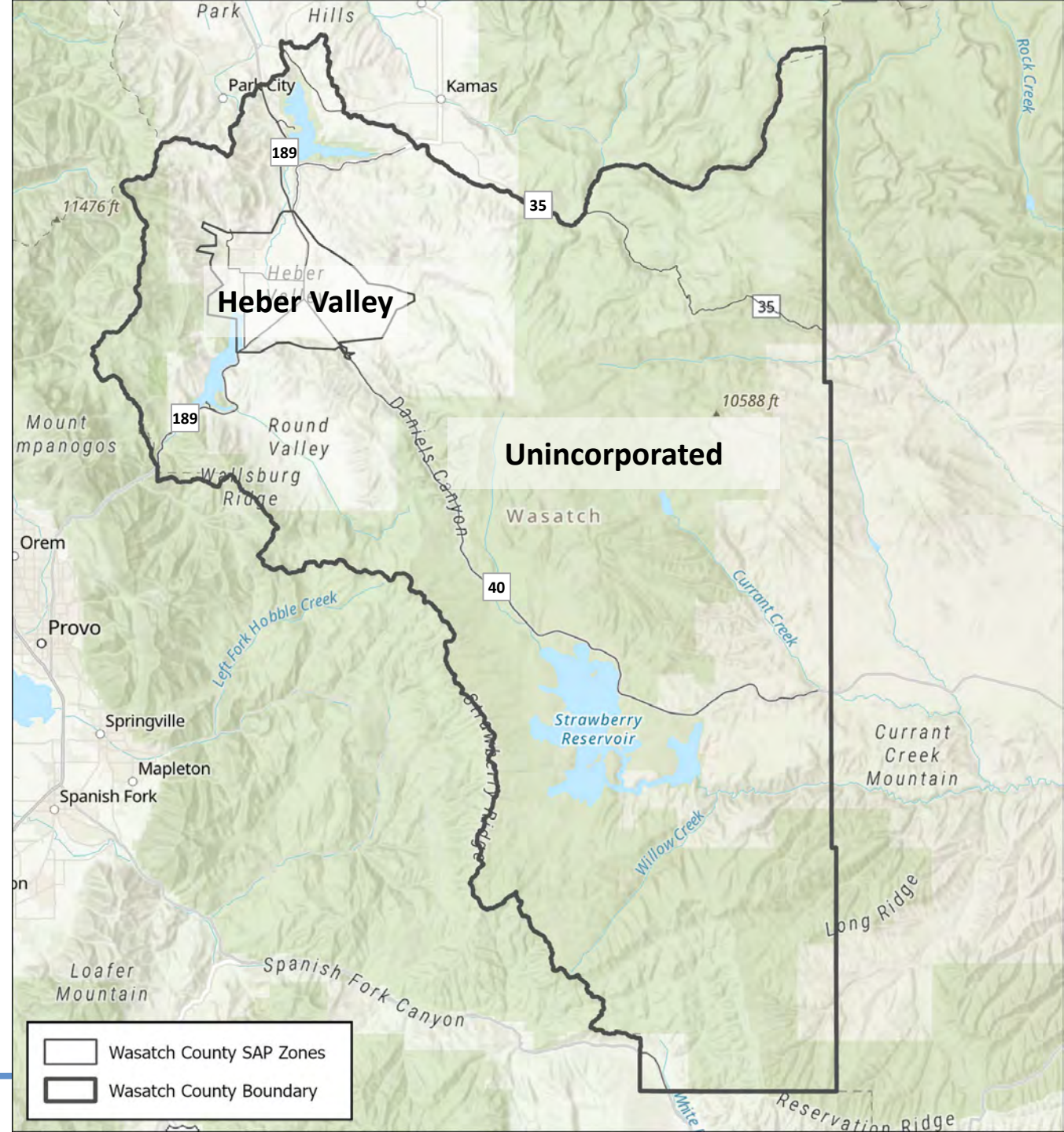
Geographic Zones

Wasatch County was divided into two analysis zones:

1. Heber Valley
2. Unincorporated Wasatch County

Why: Analyze enough collisions to get meaningful results

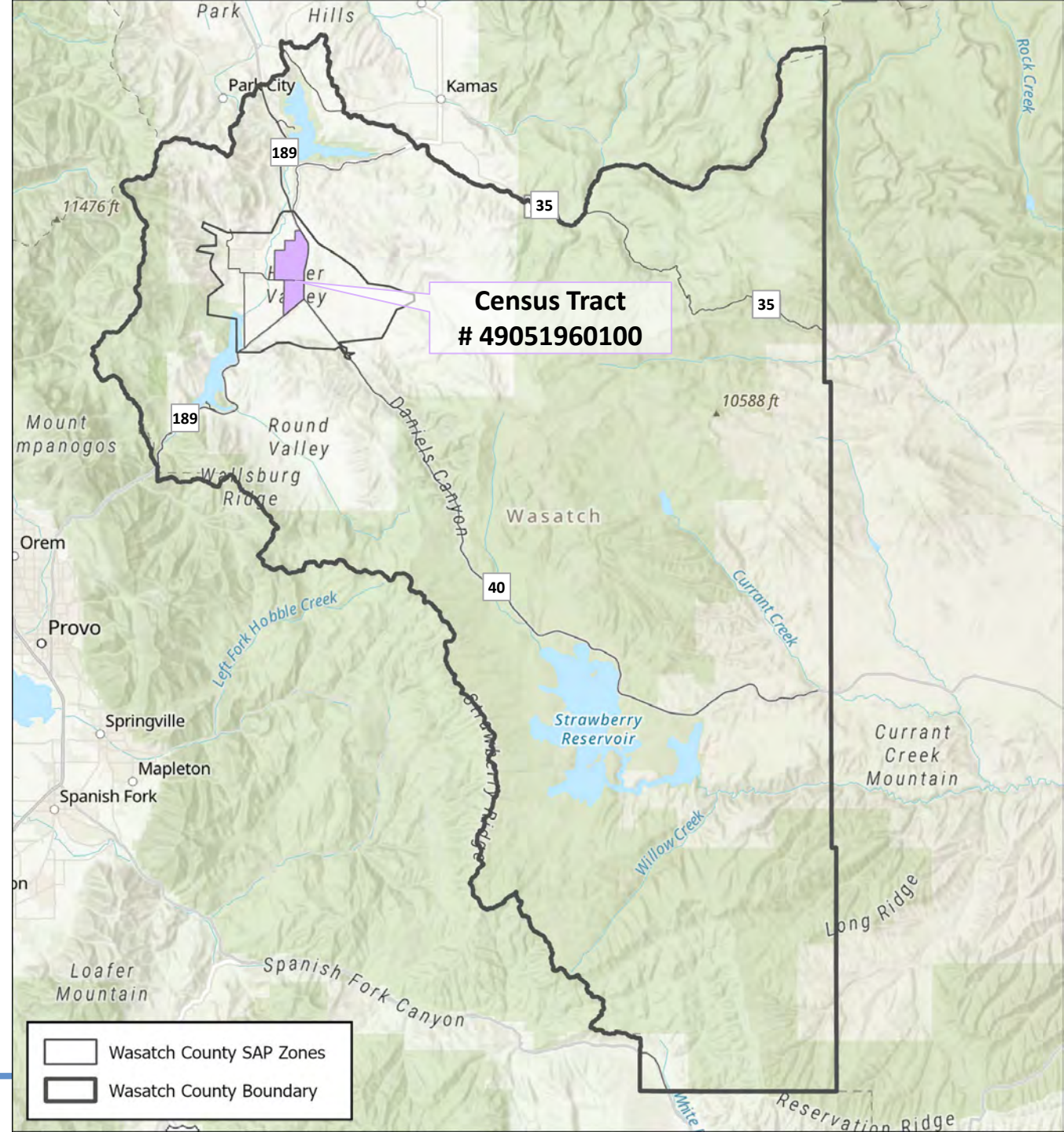
How: Grouped jurisdictions with similar characteristics



Demographic Snapshot

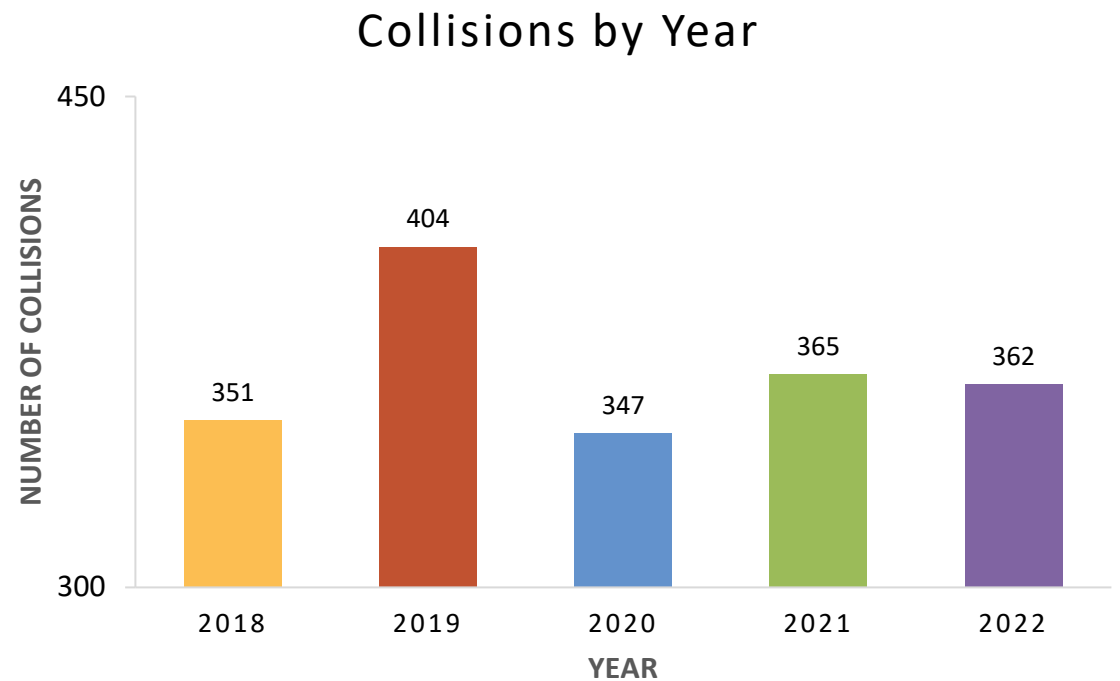
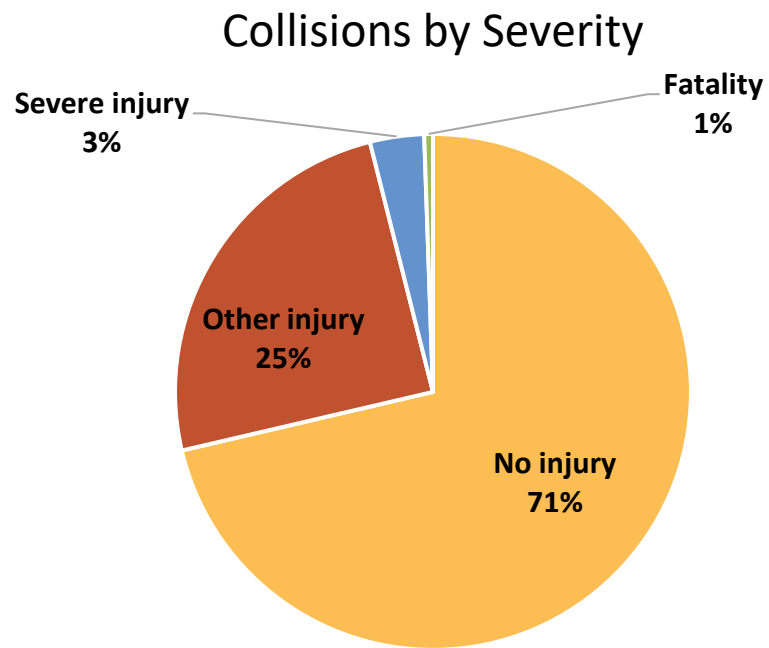
Disadvantaged communities are important considerations for analysis and recommendations

What is a disadvantaged community?



Heber Valley: collisions

- 1,829 total collisions from 2018-2022



Heber Valley: collisions

- 38 collisions involved active transportation users



16 collisions

5 resulted in severe
injury or fatality



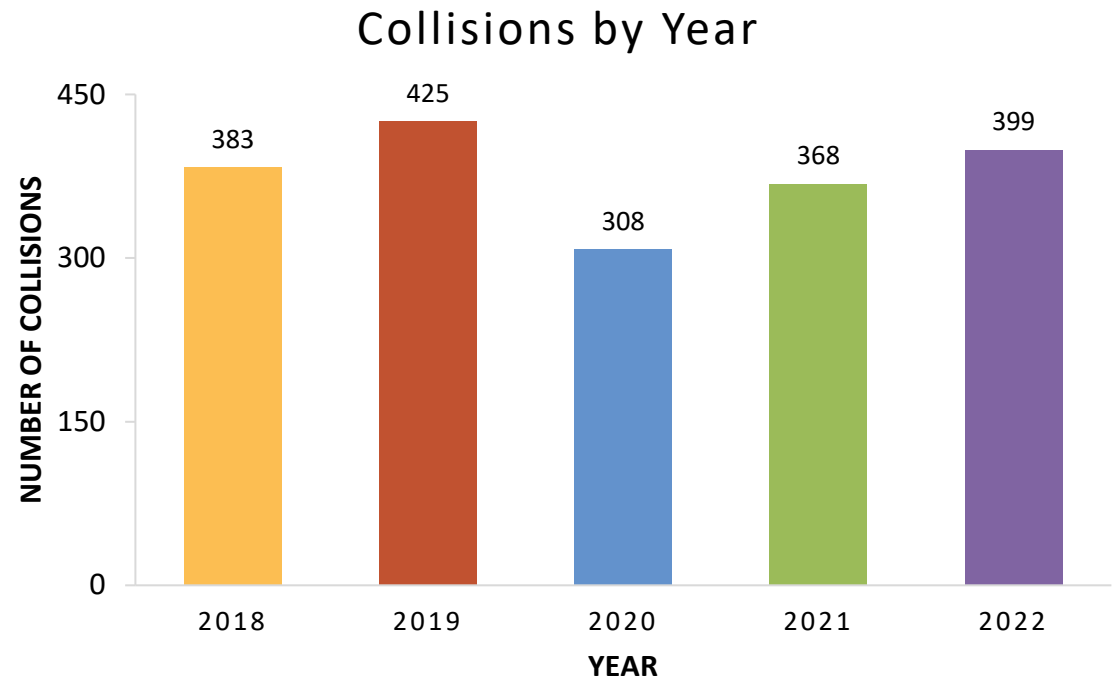
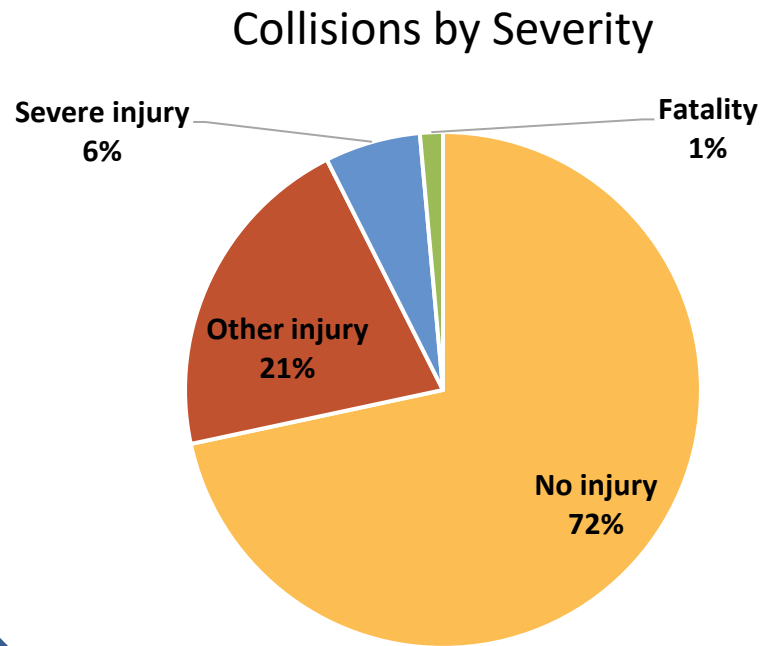
22 collisions

0 resulted in severe
injury or fatality



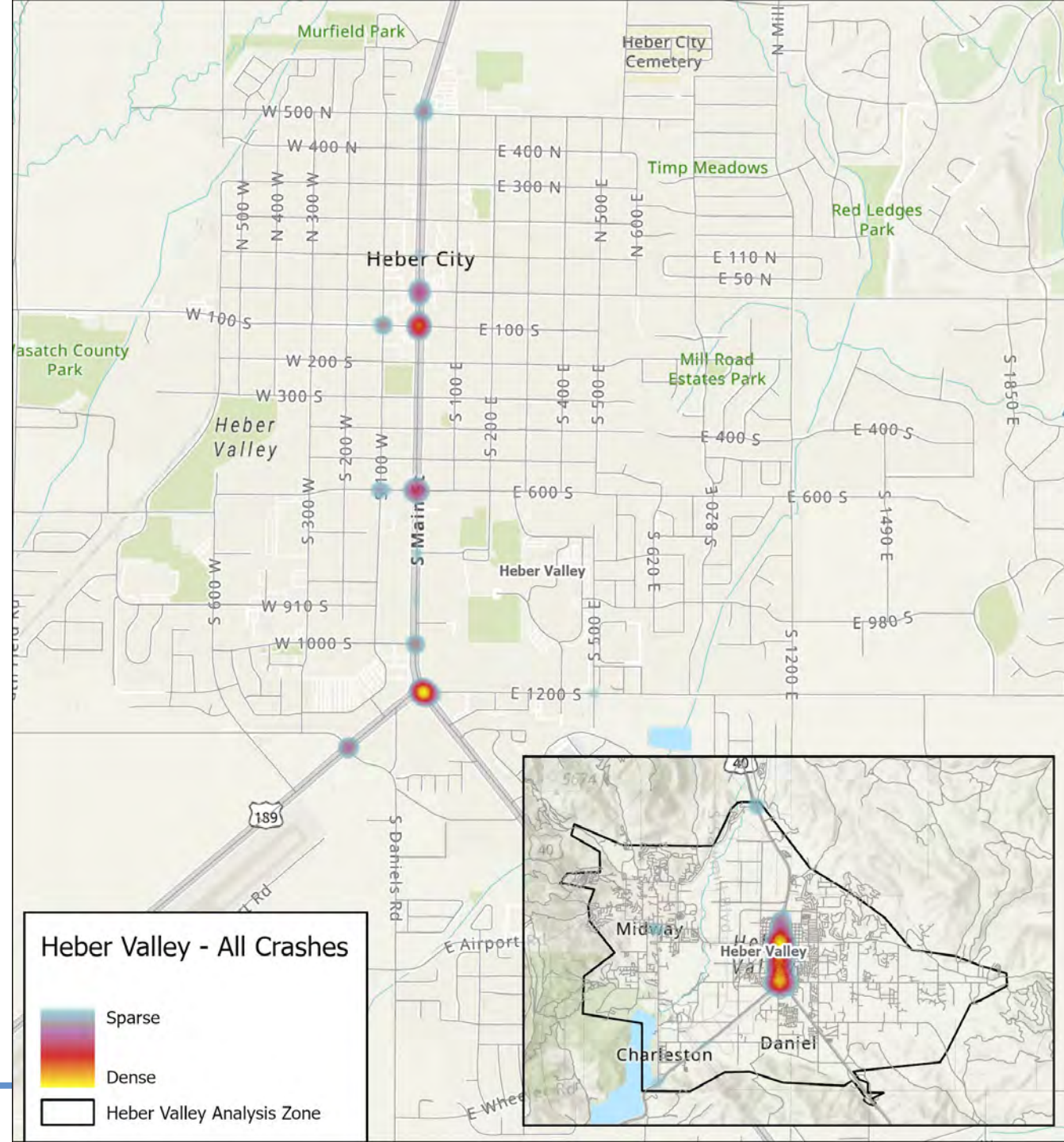
Unincorporated Wasatch County: Collisions

- 1,883 total collisions from 2018-2022



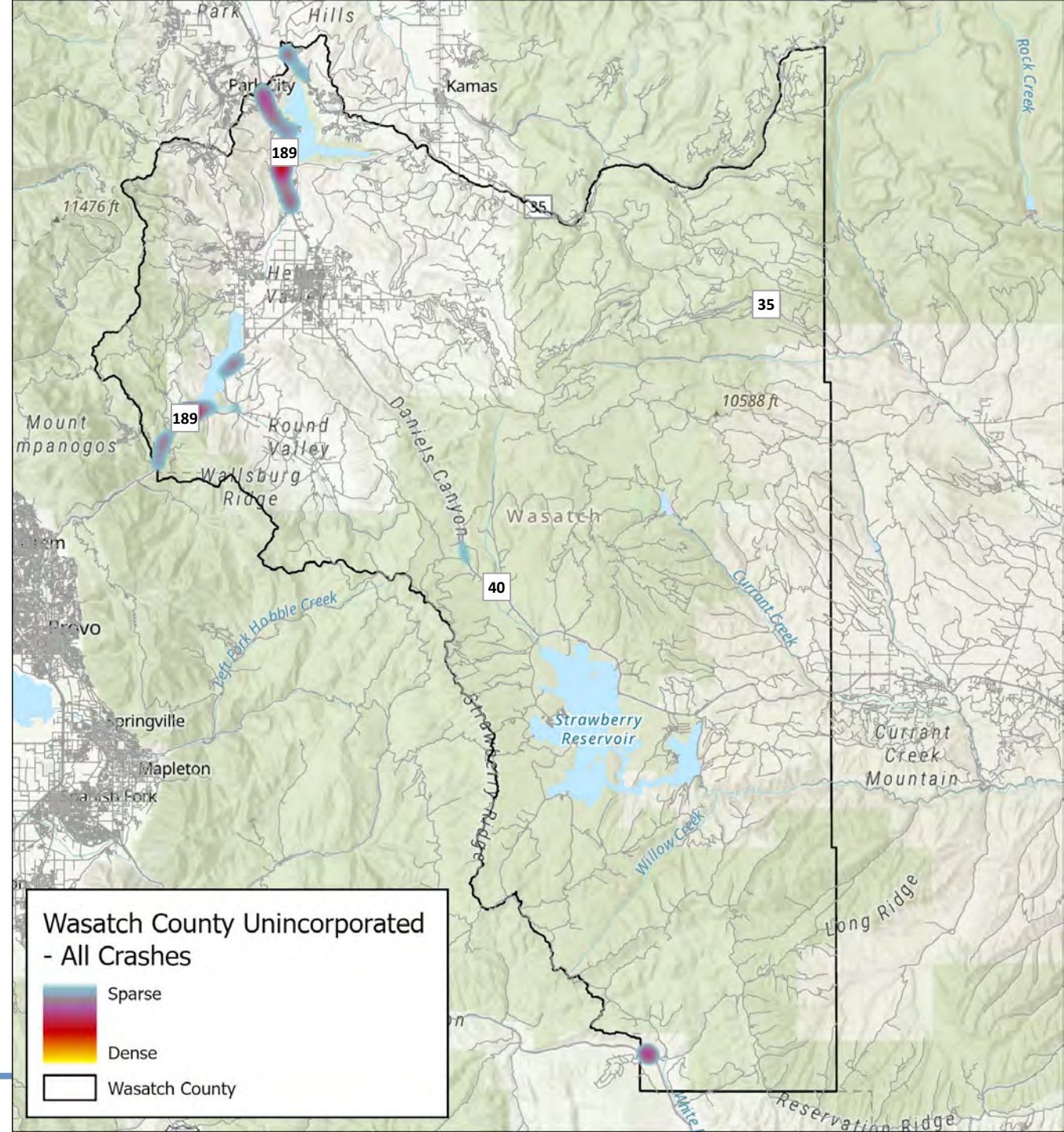
Heber Valley: Hot Spot Locations

- **All collisions:**
 - Downtown Heber City
- **Severe injury/fatal collisions:**
 - South Main Street & US-189
- **Bike/pedestrian collisions:**
 - South Main & Center



Unincorporated Wasatch County: Hot Spot Locations

- **All collisions:**
 - US-189
- **Severe injury/fatal collisions:**
 - SR-35
- **Bike/pedestrian collisions:**
 - US-189 & SR-248



Heber Valley:

Overrepresented Serious Injury/Fatal Crash Characteristics



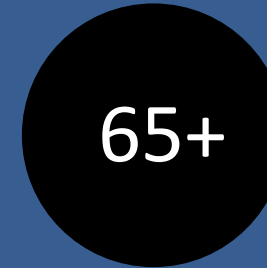
8%
involved
distracted driving



24%
involved
impaired driving



19%
involved
teens driving



21%
involved
older adults



6%
involved
drowsy drivers

These rates are higher than county AND state rates.



Unincorporated Wasatch County: Overrepresented Serious Injury/Fatal Crash Characteristics



24%
involved
motorcycles



51%
involved
roadway departure



33%
involved
speeding



15%
involved
heavy vehicles



4%
involved
work zones

These rates are higher than county AND state rates.

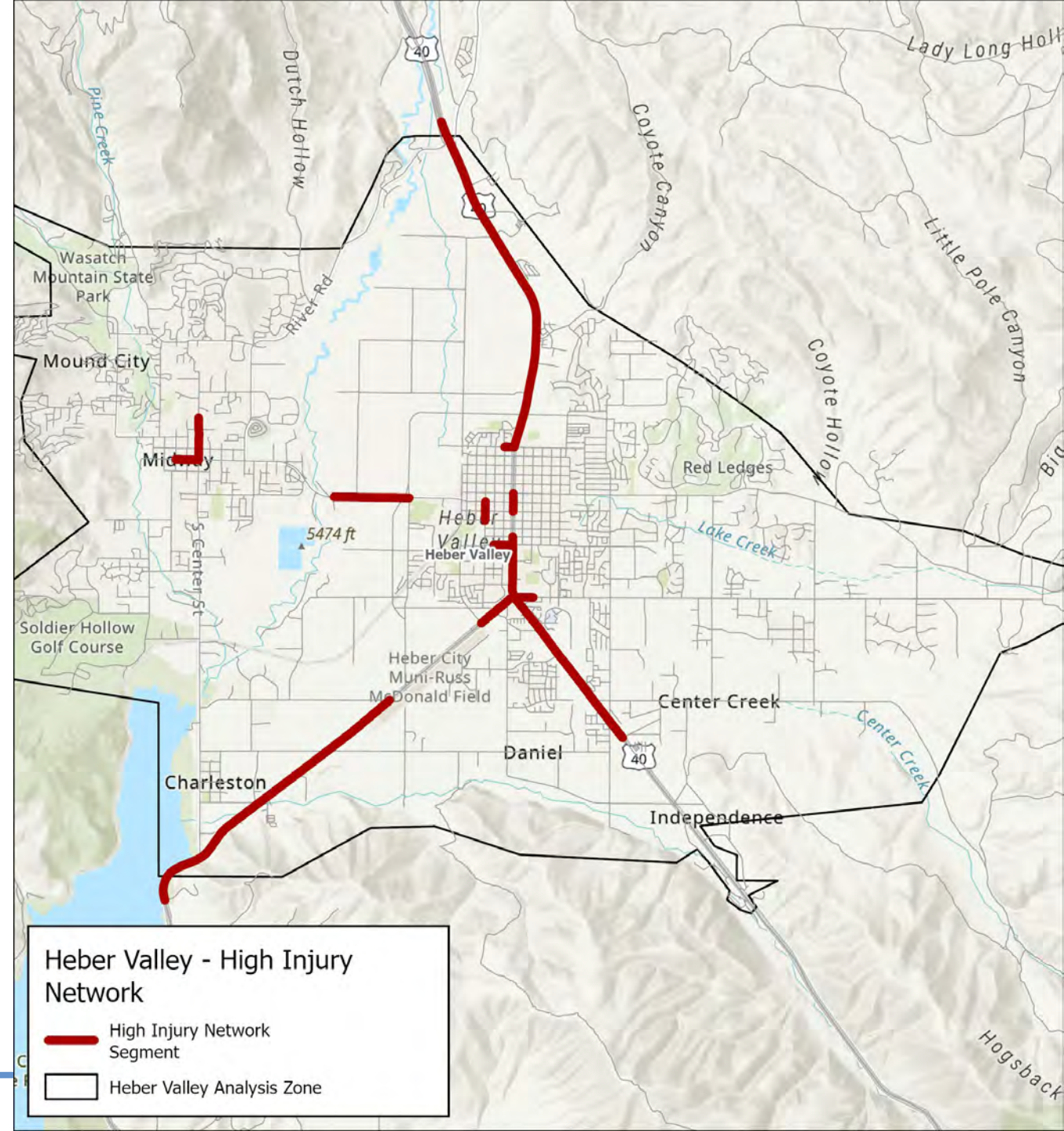


Heber Valley: High Injury Network

10% of roads have 72% of crashes
resulting in severe injury or fatality

Top locations:

- North US-40
- Southwest US-189
- South Main Street

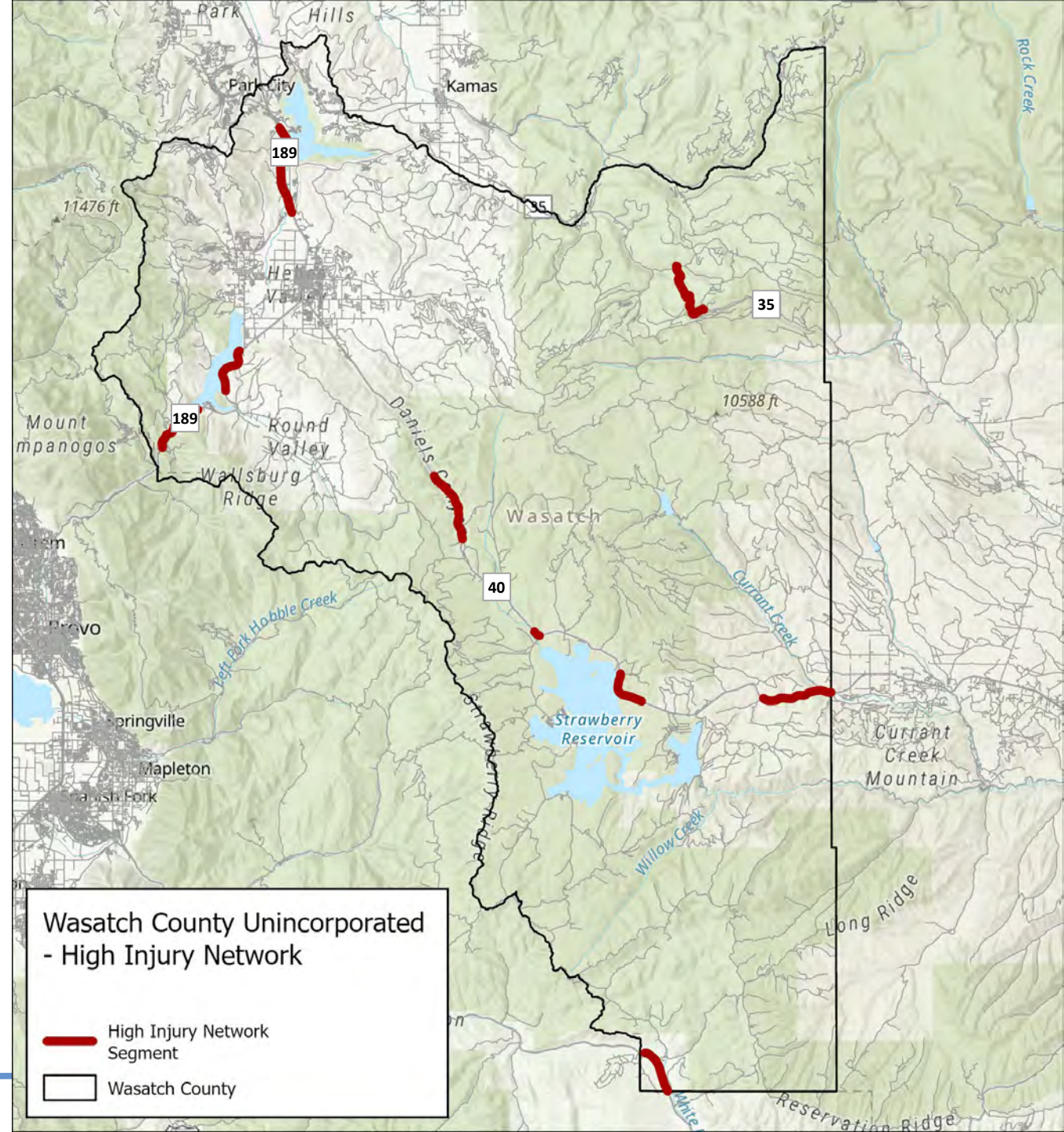


Unincorporated Wasatch County: High Injury Network

10% of roads have 39% of crashes resulting in severe injury or fatality

Top locations:

- US-6
- US-189
- SR-35
- US-40



Next Steps

- Identify safety countermeasures
- Generate project lists
 - Near, mid, and long term
- Identify candidates for SS4A Implementation Grants
- Support projects for other funding sources
- Develop safety planning support tools



Schedule







Public Involvement

- Goal to inform community members and gather comments about roadway safety
- Recently finished pedestrian intercept surveys in Heber
- Will attend community events and hold another public meeting in spring 2024



Take the Survey

- Tell us about your experiences and share information about roadway safety in your community
- Survey open through December 20th
- Survey available at www.mountainlandsafestreeets.org

MOUNTAINLAND SAFE STREETS    

Study Overview

To improve safety for all roadway users (drivers, pedestrians, cyclists, people who use scooters, mobility devices, etc.), the **Mountainland Association of Governments (MAG)**, which develops transportation policies and guidance for Summit, Utah, and Wasatch counties, is developing a Safety Action Plan that will have a lasting change on safety culture in these communities.

Ultimately, the Plan will result in a series of **transportation improvement transportation projects** that MAG, and/or cities within its jurisdiction, can submit to the United States Department of Transportation to gain funding for implementation.

What is your zipcode?*

What types of transportation do you use when you travel?
Choose all that apply

Car

Public Transit

Bike



Connect With Us



Email: safestreeets@mountainland.org



Call or text: 385-855-3292



Website: www.mountainlandsafestreeets.org



Questions?

